



# **SB36: Pretrial Pilot Program Aggregated Data Report**

---

AS REQUIRED UNDER SENATE BILL 36  
(STATS. 2019, CH. 589)

JULY 1, 2021



**JUDICIAL COUNCIL  
OF CALIFORNIA**

OPERATIONS AND PROGRAMS DIVISION  
CRIMINAL JUSTICE SERVICES

## CONTENTS

Introduction .....	2
Impact of COVID-19 Pandemic .....	2
SB 36 Judicial Council Reporting Requirements .....	4
Jail Bookings and Releases .....	6
Release Rates by Offense Type, Gender, and Race and Ethnicity .....	6
Pretrial Outcomes .....	17
Pretrial Outcomes by Offense Type and Release Pursuant to Risk Assessment or Bail Release .....	17
Assessments .....	20
Pretrial Assessments by Age, Gender, Race and Ethnicity, Release Decision, and Risk Level .....	20
Pretrial Assessments by Booking Charge Level .....	23
Supervision .....	24
Number and Percent of Scored Individuals by Level of Supervision .....	24
Outcomes for Scored Individuals by Level of Supervision .....	25
Risk Assessment Tool-Specific Figures .....	27
PSA Risk Assessment Tool Information .....	27
PSA Outcomes .....	27
PSA Risk Score Distributions .....	33
ORAS Risk Assessment Tool Information .....	39
ORAS Outcomes .....	39
ORAS Risk Score Distributions .....	43
VPRAI Risk Assessment Tool Information .....	45
VPRAI Outcomes .....	45
VPRAI Risk Score Distributions .....	49
VPRAI-R Risk Assessment Tool Information .....	51
VPRAI-R Outcomes .....	51
VPRAI-R Risk Score Distributions .....	55
VPRAI-O Risk Assessment Tool Information .....	57
VPRAI-O Outcomes .....	57
VPRAI-O Risk Score Distributions .....	57
Judicial Overrides .....	60
Risk Assessment Tools and Release Conditions Frameworks .....	62
Appendix A: Data Reporting Policy .....	71
Appendix B: Supplemental Tables .....	72

## INTRODUCTION

As part of the Budget Act of 2019, the Legislature allocated \$75 million to the Judicial Council to fund the implementation, operation, and evaluation of court pilot projects related to pretrial decisionmaking. The Budget Act requires that pilot courts collaborate with local justice system partners to make data available to the Judicial Council as required to measure the outcomes of the pilots. The Judicial Council is required to administer the program and report to the Department of Finance and the Joint Legislative Budget Committee every six months. Three reports have been published to date and are posted here:

<https://www.courts.ca.gov/pretrialpilotprogram.htm>

Senate Bill 36 (Hertzberg; Stats. 2019, ch. 589) established tool validation and additional annual reporting requirements for pretrial services agencies using a pretrial risk assessment tool; these requirements are mandatory for all pilot projects. This report meets the reporting requirements outlined in SB 36. The Judicial Council has posted a report addressing the validation requirements of SB 36 here: [Pretrial-Risk-Assessment-Tool-Validation\\_June-2021.pdf \(ca.gov\)](#)

In compiling the data for these reports, the Judicial Council of California used datasets created with data from the courts and two agencies in each county, as well as statewide data from the California Department of Justice. The data used in this report generally cover the time period extending from October 1, 2019 to December 31, 2020.

The sources of data include:

- **Jail booking data:** Sheriff's office provided information on all individuals booked into local county jail, including booking dates, charges, and releases.
- **Probation data:** Probation departments collected pretrial assessment information, including assessment dates and scores.
- **Court case data:** Superior courts provided court case information, including pretrial disposition dates and the issuance of warrants for failures to appear for those with felony or misdemeanor criminal filings.
- **California Department of Justice Data (CA DOJ) data:** The California Department of Justice provided arrest and disposition data, including out-of-county filings, for booked individuals.

After collection from each source, the data were standardized and linked to create datasets for analysis to produce each table or figure in the report. In most counties, local justice agencies keep separate data systems, but not all data could be matched across agencies. For tables that present outcomes during the pretrial period, it was necessary for the full pretrial period to be observed. Thus, the only bookings included were those for which the individual was released pretrial and there was a final disposition associated with the booking.

## IMPACT OF COVID-19 PANDEMIC

During much of period covered by this report, the United States experienced the COVID-19 global pandemic. On March 4, 2020, as part of growing statewide efforts in response to COVID-19, Governor Gavin Newsom declared a state of emergency to protect public health and safety in anticipation of a broader outbreak of the virus. This announcement supplemented and formalized many efforts by the California Department of Public Health, California Health and Human Services Agency, Governor's Office of Emergency Services, and other state agencies and departments to mitigate this public health crisis. On

March 19, 2020, orders from the Governor and the California Department of Public Health directed all California residents to stay home except when performing essential jobs or shopping for necessities.

On March 27, 2020, the Governor issued an order giving the Judicial Council of California and the Chief Justice authority to take necessary action to respond to the health and safety crisis resulting from the COVID-19 pandemic, including by adopting emergency rules that otherwise would be inconsistent with statutes concerning civil or criminal practice or procedures. The Governor's order also suspended statutes to the extent that they would be inconsistent with such emergency rules. Under this order, the Judicial Council adopted various emergency measures to support courts in providing essential services and helping to safely reduce jail populations. Several of these measures, along with local policies adopted by individual courts in response to the crisis, have impacted the population eligible for participation in the Pretrial Pilot Program. Such measures include extending the period for holding arraignments and, most significantly, the adoption of a statewide emergency bail schedule.

On April 6, 2020, the Judicial Council approved 11 temporary emergency rules, including the adoption of a statewide emergency bail schedule that set presumptive bail at \$0 for most misdemeanors and lower-level felonies, with specified exceptions, but did not change any of the traditional bail procedures or the ability of a court to exercise discretion related to the setting of bail. The emergency rule was intended to promulgate uniformity in release and detention of arrestees throughout the state and to safely reduce jail populations and protect justice system personnel and public health.

The Judicial Council repealed the rule effective June 20, 2020 and encouraged courts to adopt local emergency bail schedules with \$0 bail or significantly reduced bail levels for certain misdemeanor and low-level felony offenses to meet their county's public health and safety conditions.

In order to continue to reduce the spread of COVID-19, approximately half of the 17 counties participating in the pilot program adopted local emergency bail schedules. As a result of local criminal justice system policies and the emergency bail schedule, pilot courts observed significant reductions in booking rates and jail populations during this time. Under these temporary emergency policies, many individuals who would otherwise have been eligible for program participation were cited and released in the field or released on \$0 bail upon booking without undergoing a risk assessment. Crime and arrest patterns were also likely affected by COVID-19 and subsequent local shelter-in-place orders. Finally, criminal case dispositions slowed during this time period and, as noted, several of the tables in this report use only bookings with final dispositions.

Therefore, the population of program participants shown in this report is very likely different than would be seen in the absence of the pandemic, both in terms of reduced numbers and composition. As California emerges from the COVID-19 pandemic, we anticipate that program participation will grow, with more individuals served.

## SB 36 JUDICIAL COUNCIL REPORTING REQUIREMENTS

This report fulfills the legislative mandate of Senate Bill 36 (Stats. 2019, ch. 589). SB 36 added chapter 1.7, Pretrial Risk Assessment Tool Validation (commencing with section 1320.35) to title 10 of part 2 of the Penal Code, relating to pretrial release. Under SB 36, the Judicial Council is required to “publish on its internet website a report with data related to outcomes and potential biases in pretrial release.” Under Penal Code section 1320.35(f), the report must, at a minimum, include:

- (1) The following information on each county<sup>1</sup> pretrial release program:
  - (A) The name of the pretrial risk assessment tool that is used to inform release decisions by the court.
  - (B) The release conditions framework used in the county.
  - (C) Whether a pretrial services agency is conducting interviews as part of the risk assessment.
- (2) The following information by superior court in large and medium courts and otherwise aggregated by superior court size:
  - (A) Rates of release granted prearrest and rates of release granted pretrial, aggregated by gender, race or ethnicity, ZIP Code of residency<sup>2</sup> and offense type.
  - (B) The percent of released individuals who make their required court appearances, aggregated by offense type and whether they were released on bail or pursuant to a risk assessment. For those released pursuant to a risk assessment, this information shall be aggregated by risk level.
  - (C) The percent of released individuals who are not charged with a new offense during the pretrial stage, aggregated by offense type and whether they were released on bail or pursuant to a risk assessment. For those released pursuant to a risk assessment, this information shall be aggregated by risk level.
  - (D) The number of assessed individuals by age, ZIP Code of residency, gender, and race or ethnicity.
  - (E) The number of assessed individuals by risk level, ZIP Code of residency, booking charge level, and release decision.
  - (F) The number and percentage of assessed individuals who receive pretrial supervision by level of supervision.

---

<sup>1</sup> Data from some pretrial pilot counties were aggregated due to small sample sizes. Reported in the aggregate under “Medium/small” pilot courts are: Kings, Napa, and Nevada-Sierra. Reported in the aggregate under “Small” pilot courts are Calaveras, Modoc, Tuolumne, Yuba. This report contains limited data for Tulare. Due to an administrative oversight data for Tulare was inadvertently excluded from the processing queue for this reporting period. The JCC will request the necessary California DOJ data for Tulare, and publish the results once the data are reviewed and integrated with county data. Tulare submitted all required data for this reporting period and is in full compliance with grant parameters. Additionally, Tulare volunteered to standardize data elements for future automated reporting purposes.

<sup>2</sup> Data aggregated by ZIP Code of residency are not reported due to the high share of missing values and small cell sizes. Overall, 87 percent of cases were missing ZIP Code of residency, and most of the non-missing ZIP Codes contain fewer than 30 individuals. Reporting cells with counts of fewer than 30 violates the privacy policy adopted in this report (see Appendix A, Data Reporting Policy).

- (G) The number and percentage of assessed individuals, by supervision level, who fail to appear in court as required, are arrested for a new offense during the pretrial period, or have pretrial release revoked.
- (3) The following information on each risk assessment tool:
- (A) The percent of released individuals who attend all of their required court appearances and are not charged with a new offense during the pretrial stage, aggregated by risk level.
  - (B) Risk levels aggregated by race or ethnicity, gender, offense type, ZIP Code of residency, and release or detention decision.
  - (C) The predictive accuracy of the tool by gender, race or ethnicity, and offense type.<sup>3</sup>
  - (D) The proportion of cases in which the release or detention recommendation derived from the risk assessment is different than the release or detention decision imposed by the judicial officer.

---

<sup>3</sup> Throughout this report, “predictive accuracy” is demonstrated by court appearance and no new charge rates. For a complete analysis of the predictive accuracy of each tool, see the validation reports produced by the Judicial Council of California pursuant to SB 36. <https://www.courts.ca.gov/sb36.htm>

## JAIL BOOKINGS AND RELEASES

The release rate tables presented below provide an overarching view of jail bookings and releases. Care should be taken in drawing generalizations from this data because the data are based on jail bookings from October 1, 2019, to March 31, 2021. For a significant portion of that period, emergency policies were in place in jails, pretrial services agencies, and courts due to the COVID-19 pandemic.<sup>4</sup>

### RELEASE RATES BY OFFENSE TYPE, GENDER, AND RACE AND ETHNICITY

The following tables on release rate by offense type (Tables 1a, 1b and 1c), gender (Tables 2a, 2b and 2c), and race and ethnicity (Tables 3a, 3b, 3c and 3d) are based on bookings for new arrests.<sup>5</sup> If there were multiple charges at booking, the most serious charge is selected as the index charge.<sup>6</sup> (N=434,331)

---

<sup>4</sup> Emergency rule 4 of the California Rules of Court, adopted by the Judicial Council, provided for a statewide emergency bail schedule that authorized the release on zero bail for persons arrested for most misdemeanors and lower-level felony offenses. This rule was in place from April 19 to June 20, 2020; several courts continued to apply local zero bail policies after this period. Pilot counties counted jail releases pursuant to Emergency Bail Order 4 in a number of different ways. Some pilot counties created a special release code for these zero bail releases (Alameda, San Joaquin, San Mateo, Santa Barbara, Tuolumne, Nevada-Sierra and Ventura). Other pilot counties reported that they included zero bail releases with their cite and releases (Napa, Nevada-Sierra, Sonoma and Tulare), or in some other release category (Sacramento). Two pilot counties (Kings and Calaveras) reported that they excluded zero bail releases from the data they submitted to the JCC. One pilot county (Los Angeles) did not distinguish these zero bail releases from money bail releases. For the remaining pilot counties the JCC was unable to confirm zero bail reporting conventions (Yuba and Tuolumne).

<sup>5</sup> Jail data were collected in each pilot site and cover the period from October 1, 2019, to March 31, 2021. See Appendix B, Table B1, for the range of booking dates by county.

<sup>6</sup> The severity of charges is determined using the California Department of Justice Offense Hierarchy.

**TABLE 1a.** Release Rates of New Arrest Bookings, by Offense Type (Misdemeanor)

All New Arrest Bookings (Misdemeanor)		Released Within 2 Court Days								Released After 2 Court Days			
		POST-RESOLUTION		PRETRIAL				UNKNOWN	TOTAL	PRETRIAL			
County	Total	Charges not Filed, Charges Dropped, or Case Dismissed	Convicted	Bail Release	Zero Bail Release	Cite & Release	OR Release	Unclear Release Type (Post-Resolution or Pretrial)	Total Released Within 2 Court Days	Bail Release	Zero Bail Release	Cite & Release	OR Release
Small Counties	2,914	1%	0%	4%	0% <sup>M</sup>	0%	69%	3%	78%	1%	1% <sup>M</sup>	0%	5%
Small/Medium Counties	7,190	2%	2%	5%	0% <sup>M</sup>	42%	19%	14%	85%	1%	0% <sup>M</sup>	0%	0%
Alameda	12,413	10%	0%	8%	4%	69%	2%	1%	94%	0%	0%	0%	1%
Sacramento	6,829	14%	0%	6%	-- <sup>U</sup>	64%	0%	2%	87%	0%	-- <sup>U</sup>	3%	0%
San Joaquin	9,578	19%	9%	8%	3%	33%	9%	1%	83%	0%	0%	0%	1%
San Mateo	6,071	17%	0%	10%	0%	37%	3%	5%	73%	2%	0%	5%	1%
Santa Barbara	8,516	3%	3%	7%	7%	44%	2%	6%	71%	2%	1%	2%	2%
Sonoma	8,334	6%	3%	27%	-- <sup>C</sup>	33%	9%	2%	80%	1%	-- <sup>C</sup>	1%	4%
Ventura	16,548	6%	7%	7%	4%	52%	3%	2%	81%	1%	0%	0%	1%

Notes: This table satisfies the reporting mandate under Penal Code section 1320.35(f)(2)(A). Total bookings from Tables 1a, 1b and 1c sum to 387,404. Charges not classified as felonies or misdemeanors are not shown in this table. These data are drawn exclusively from jail booking data and release types correspond to jail release types. Releases to pretrial supervision are included under OR release.

“C” in the zero bail column indicates these releases were included in the cite and release column.

“U” in the zero bail column indicates these releases were included in an other or unknown release category.



“M” in the zero bail column indicates these releases were included in different ways across the grouped counties. See footnote 4 for details.

**TABLE 1b.** Release Rates of New Arrest Bookings, by Offense Type (Felony)

All New Arrest Bookings (Felony)		Released Within 2 Court days								Released After 2 court days			
County	Total	POST-RESOLUTION		PRETRIAL				UNKNOWN	TOTAL	PRETRIAL			
		Charges not Filed, Charges Dropped, or Case Dismissed	Convicted	Bail Release	Zero Bail Release	Cite & Release	OR Release	Unclear Release Type (Post-Resolution or Pretrial)	Total Released Within 2 Court Days	Bail Release	Zero Bail Release	Cite & Release	OR Release
Small Counties	1,694	2%	1%	12%	4% <sup>M</sup>	0%	27%	7%	54%	7%	1% <sup>M</sup>	0%	6%
Small/Medium Counties	3,679	5%	1%	18%	0% <sup>M</sup>	8%	3%	12%	47%	6%	0% <sup>M</sup>	0%	3%
Alameda	9,657	15%	0%	16%	11%	16%	7%	1%	67%	6%	1%	1%	6%
Sacramento	6,340	3%	0%	23%	-- <sup>U</sup>	1%	3%	30%	60%	0%	-- <sup>U</sup>	0%	0%
San Joaquin	10,387	11%	11%	9%	3%	1%	14%	4%	52%	4%	1%	0%	6%
San Mateo	4,626	6%	0%	32%	1%	3%	6%	8%	55%	8%	1%	3%	2%
Santa Barbara	4,410	5%	1%	15%	16%	1%	5%	4%	47%	5%	1%	0%	6%
Sonoma	4,230	10%	1%	23%	-- <sup>C</sup>	11%	10%	1%	57%	3%	-- <sup>C</sup>	1%	7%
Ventura	6,616	17%	1%	19%	6%	0%	7%	2%	53%	7%	1%	0%	4%

Notes: This table satisfies the reporting mandate under Penal Code section 1320.35(f)(2)(A). Total bookings from Tables 1a, 1b, and 1c sum to 387,404. Charges not classified as felonies or misdemeanors are not shown in these tables. These data are drawn exclusively from jail booking data and releases types correspond to jail release types. Release to pretrial supervision are included under OR release. Some felony bookings for Alameda are known to be missing, Alameda and the JCC are working to resolve this issue.

“C” in the zero bail column indicates these releases were included in the cite and release column.

“U” in the zero bail column indicates these releases were included in an other or unknown release category.

“M” in the zero bail column indicates these releases were included in different ways across the grouped counties. See footnote 4 for details.

**TABLE 1c. Release Rates of All Bookings, by Offense Type (Los Angeles County)**

All Bookings		Released Within 2 Court Days								Released After 2 Court Days			
		POST-RESOLUTION		PRETRIAL				UNKNOWN	TOTAL	PRETRIAL			
Offense Type	Total	Charges not Filed, Charges Dropped, or Case Dismissed	Convicted	Bail Release	Zero Bail Release	Cite & Release	OR Release	Unclear Release Type (Post-Resolution or Pretrial)	Total Released Within 2 Court Days	Bail Release	Zero Bail Release	Cite & Release	OR Release
Misdemeanor	167,769	4%	6%	3%	-- <sup>B</sup>	59%	13%	3%	89%	0%	-- <sup>B</sup>	1%	1%
Felony	116,303	8%	3%	15%	-- <sup>B</sup>	12%	10%	6%	54%	5%	-- <sup>B</sup>	1%	4%

Notes: This table satisfies the reporting mandate under Penal Code section 1320.35(f)(2)(A). Total bookings from Tables 1a, 1b, and 1c sum to 387,404. New arrest bookings could not be separated out for Los Angeles in this dataset. All bookings in Los Angeles are shown on this table, including commitment bookings and other book types that are not eligible for release. These data are drawn exclusively from jail booking data and release types correspond to jail release types. "B" in the zero bail column indicates these releases were included in the bail release column.

**TABLE 2a.** Pretrial Release Rates of New Arrest Bookings, by Gender (Female)

All New Arrest Bookings (Female)		Released Within 2 Court Days								Released After 2 Court Days			
		POST-RESOLUTION		PRETRIAL				UNKNOWN	TOTAL	PRETRIAL			
County	Total	Charges not Filed, Charges Dropped, or Case Dismissed	Convicted	Bail Release	Zero Bail Release	Cite & Release	OR Release	Unclear Release Type (Post-Resolution or Pretrial)	TOTAL: Re-leased Within 2 Court Days	Bail Release	Zero Bail Release	Cite & Release	OR Release
Small Counties	1,358	2%	0%	8%	2% <sup>M</sup>	0%	58%	5%	75%	2%	0% <sup>M</sup>	0%	4%
Small/Medium Counties	2,456	4%	2%	11%	0% <sup>M</sup>	30%	15%	14%	77%	2%	0% <sup>M</sup>	0%	1%
Alameda	5,266	11%	2%	14%	6%	41%	6%	1%	81%	2%	1%	1%	4%
Sacramento	4,467	6%	1%	14%	-- <sup>U</sup>	35%	4%	14%	75%	1%	-- <sup>U</sup>	3%	3%
San Joaquin	4,146	18%	9%	10%	3%	20%	13%	2%	75%	2%	0%	0%	4%
San Mateo	2,130	14%	0%	24%	0%	22%	4%	5%	69%	4%	1%	5%	1%
Santa Barbara	2,694	4%	2%	12%	11%	31%	3%	5%	68%	1%	1%	2%	5%
Sonoma	2,731	9%	2%	31%	-- <sup>C</sup>	25%	9%	1%	78%	2%	-- <sup>C</sup>	1%	5%
Ventura	5,255	9%	6%	13%	4%	41%	5%	2%	80%	2%	0%	0%	1%

Notes: This table satisfies the reporting mandate under Penal Code section 1320.35(f)(2)(A). Total bookings from Tables 2a,2b, and 2c sum to 432,943.

Individuals not classified as female or male are not shown in this table. These data are drawn exclusively from jail booking data and release types correspond to jail release types. Releases to pretrial supervision are included under OR release.

"C" in the zero bail column indicates these releases were included in the cite and release column.

"U" in the zero bail column indicates these releases were included in an other or unknown release category.

"M" in the zero bail column indicates these releases were included in different ways across the grouped counties. See footnote 4 for details.

**TABLE 2b.** Pretrial Release Rates of New Arrest Bookings, by Gender (Male)

All New Arrest Bookings (Male)		Released Within 2 Court Days								Released After 2 Court Days			
		POST-RESOLUTION		PRETRIAL				UNKNOWN	TOTAL	PRETRIAL			
County	Total	Charges not Filed, Charges Dropped, or Case Dismissed	Convicted	Bail Release	Zero Bail Release	Cite & Release	OR Release	Unclear Release Type (Post-Resolution or Pretrial)	TOTAL: Re-leased Within 2 Court Days	Bail Release	Zero Bail Release	Cite & Release	OR Release
Small Counties	3,432	2%	0%	6%	2% <sup>M</sup>	0%	49%	6%	66%	3%	1% <sup>M</sup>	0%	6%
Small/Medium Counties	8,486	3%	2%	9%	0% <sup>M</sup>	31%	13%	13%	70%	3%	0% <sup>M</sup>	0%	1%
Alameda	22,706	10%	2%	9%	7%	34%	6%	2%	70%	3%	1%	1%	5%
Sacramento	14,581	6%	2%	13%	-- <sup>U</sup>	28%	3%	13%	65%	2%	-- <sup>U</sup>	3%	2%
San Joaquin	16,162	14%	10%	8%	3%	16%	11%	3%	66%	2%	0%	0%	3%
San Mateo	8,638	12%	0%	18%	1%	23%	4%	6%	64%	5%	1%	4%	1%
Santa Barbara	10,237	4%	2%	9%	10%	29%	3%	5%	61%	3%	1%	1%	3%
Sonoma	9,843	7%	2%	24%	-- <sup>C</sup>	26%	10%	2%	70%	2%	-- <sup>C</sup>	1%	5%
Ventura	18,246	9%	5%	10%	5%	37%	4%	2%	72%	3%	0%	0%	2%

Notes: This table satisfies the reporting mandate under Penal Code section 1320.35(f)(2)(A). Total bookings from Tables 2a, 2b, and 2c sum to 432,943. individuals not classified as female or male are not shown in this table. These data are drawn exclusively from jail booking data and release types correspond to jail release types. Releases to pretrial supervision are included under OR release.

“C” in the zero bail column indicates these releases were included in the cite and release column.

“U” in the zero bail column indicates these releases were included in an other or unknown release category.

“M” in the zero bail column indicates these releases were included in different ways across the grouped counties. See footnote 4 for details.

**TABLE 2c. Pretrial Release Rates of All Bookings, by Gender (Los Angeles County)**

All Bookings		Released Within 2 Court Days								Released After 2 Court Days			
Gender	Total	POST-RESOLUTION		PRETRIAL				UNKNOWN	TOTAL	PRETRIAL			
		Charges not Filed, Charges Dropped, or Case Dismissed	Convicted	Bail Release	Zero Bail Release	Cite & Release	OR Release	Unclear Release Type (Post-Resolution or Pretrial)	Total Released Within 2 Court Days	Bail Release	Zero Bail Release	Cite & Release	OR Release
Male	230,893	5%	5%	8%	-- <sup>B</sup>	38%	12%	4%	72%	2%	-- <sup>B</sup>	1%	2%
Female	59,216	6%	5%	9%	-- <sup>B</sup>	43%	13%	5%	80%	1%	-- <sup>B</sup>	1%	2%

Notes: This table satisfies the reporting mandate under Penal Code section 1320.35(f)(2)(A). Tables 2a, 2b, and 2c sum to 432,943. New arrest bookings could not be separated out for Los Angeles in this dataset. All bookings in Los Angeles are shown on this table, including commitment bookings and other book types that are not eligible for release. These data are drawn exclusively from jail booking data and release types correspond to jail release types.

"B" in the zero bail column indicates these releases were included in the bail release column.

**TABLE 3a.** Pretrial Release Rates of New Arrest Bookings, by Race and Ethnicity (Black Defendants)

All New Arrest Bookings (Black Defendants)		Released Within 2 Court Days								Released After 2 Court Days			
		POST-RESOLUTION		PRETRIAL				UNKNOWN	TOTAL	PRETRIAL			
County	Total	Charges not Filed, Charges Dropped, or Case Dismissed	Convicted	Bail Release	Zero Bail Release	Cite & Release	OR Release	Unclear Release Type (Post-Resolution or Pretrial)	TOTAL: Re-leased Within 2 Court Days	Bail Release	Zero Bail Release	Cite & Release	OR Release
Small Counties	50	4%	0%	4%	0% <sup>M</sup>	0%	56%	2%	66%	2%	0% <sup>M</sup>	0%	6%
Small/Medium Counties	923	1%	2%	11%	0% <sup>M</sup>	31%	6%	16%	66%	5%	0% <sup>M</sup>	1%	2%
Alameda	10,559	12%	2%	10%	7%	26%	7%	2%	66%	4%	1%	1%	6%
Sacramento	5,765	5%	2%	14%	-- <sup>U</sup>	24%	3%	14%	62%	2%	-- <sup>U</sup>	3%	3%
San Joaquin	4,813	16%	10%	7%	4%	14%	11%	3%	65%	2%	0%	0%	4%
San Mateo	2,174	6%	0%	14%	1%	17%	5%	9%	51%	5%	1%	8%	2%
Santa Barbara	753	3%	2%	10%	10%	22%	4%	4%	55%	5%	0%	2%	6%
Sonoma	996	8%	2%	18%	-- <sup>C</sup>	23%	8%	2%	62%	2%	-- <sup>C</sup>	2%	6%
Ventura	1,293	8%	6%	10%	4%	33%	5%	2%	67%	4%	0%	0%	2%

Notes: This table satisfies the reporting mandate under Penal Code section 1320.35(f)(2)(A). Total bookings from Tables 3a, 3b, 3c and 3d sum to 434,331. Individuals not classified as black, white, or Hispanic are not shown in this table. These data are drawn exclusively from jail booking data and release types correspond to jail release types. Releases to pretrial supervision are included under OR release.

“C” in the zero bail column indicates these releases were included in the cite and release column.

“U” in the zero bail column indicates these releases were included in an other or unknown release category.

“M” in the zero bail column indicates these releases were included in different ways across the grouped counties. See footnote 4 for details.

**TABLE 3b.** Pretrial Release Rates of New Arrest Bookings, by Race and Ethnicity (Hispanic Defendants)

All New Arrest Bookings (Hispanic Defendants)		Released Within 2 Court Days								Released After 2 Court Days			
		POST-RESOLUTION		PRETRIAL				UNKNOWN	TOTAL	PRETRIAL			
County	Total	Charges not Filed, Charges Dropped, or Case Dismissed	Convicted	Bail Release	Zero Bail Release	Cite & Release	OR Release	Unclear Release Type (Post- Resolution or Pretrial)	TOTAL: Re- leased Within 2 Court Days	Bail Release	Zero Bail Release	Cite & Release	OR Release
Small Counties	462	3%	0%	11%	2% <sup>M</sup>	0%	53%	4%	73%	2%	1% <sup>M</sup>	0%	6%
Small/Medium Counties	3,979	1%	1%	9%	0% <sup>M</sup>	44%	5%	16%	77%	3%	0% <sup>M</sup>	0%	1%
Alameda	8,357	9%	2%	9%	6%	42%	5%	1%	75%	3%	1%	1%	5%
Sacramento	4,130	6%	1%	15%	-- <sup>U</sup>	34%	3%	11%	70%	1%	-- <sup>U</sup>	3%	2%
San Joaquin	8,005	15%	9%	8%	3%	19%	13%	2%	70%	2%	0%	0%	3%
San Mateo	4,110	15%	0%	20%	0%	26%	4%	5%	71%	5%	0%	2%	1%
Santa Barbara	6,613	4%	2%	10%	11%	25%	3%	5%	61%	3%	1%	1%	4%
Sonoma	4,018	7%	2%	30%	-- <sup>C</sup>	23%	11%	1%	76%	2%	-- <sup>C</sup>	1%	5%
Ventura	12,749	10%	5%	10%	4%	35%	5%	2%	71%	3%	0%	0%	2%

Notes: This table satisfies the reporting mandate under Penal Code section 1320.35(f)(2)(A). Total bookings from Tables 3a, 3b, 3c and 3d sum to 434,331. Individuals not classified as black, white, or Hispanic are not shown in this table. These data are drawn exclusively from jail booking data and release types correspond to jail release types. Releases to pretrial supervision are included under OR release.

"C" in the zero bail column indicates these releases were included in the cite and release column.

"U" in the zero bail column indicates these releases were included in an other or unknown release category.

"M" in the zero bail column indicates these releases were included in different ways across the grouped counties. See footnote 4 for details.

**TABLE 3c.** Pretrial Release Rates of New Arrest Bookings, by Race and Ethnicity (White Defendants)

All New Arrest Bookings (White Defendants)		Released Within 2 Court Days								Released After 2 Court Days			
		POST-RESOLUTION		PRETRIAL				UNKNOWN	TOTAL	PRETRIAL			
County	Total	Charges not Filed, Charges Dropped, or Case Dismissed	Convicted	Bail Release	Zero Bail Release	Cite & Release	OR Release	Unclear Release Type (Post-Resolution or Pretrial)	TOTAL: Re-leased Within 2 Court Days	Bail Release	Zero Bail Release	Cite & Release	OR Release
Small Counties	3,992	2%	0%	6%	2% <sup>M</sup>	0%	53%	5%	69%	3%	1% <sup>M</sup>	0%	5%
Small/Medium Counties	5,486	5%	2%	9%	0% <sup>M</sup>	20%	21%	11%	69%	2%	0% <sup>M</sup>	0%	1%
Alameda	6,287	10%	3%	8%	6%	40%	5%	2%	75%	2%	1%	1%	4%
Sacramento	7,833	7%	2%	11%	-- <sup>U</sup>	31%	4%	14%	68%	1%	-- <sup>U</sup>	3%	3%
San Joaquin	5,885	14%	12%	8%	4%	16%	10%	3%	66%	2%	0%	0%	3%
San Mateo	3,035	13%	0%	18%	1%	23%	4%	6%	65%	4%	1%	5%	1%
Santa Barbara	5,212	3%	2%	8%	9%	34%	3%	5%	64%	2%	1%	2%	3%
Sonoma	7,022	7%	2%	24%	-- <sup>C</sup>	27%	9%	2%	71%	2%	-- <sup>C</sup>	1%	5%
Ventura	8,693	9%	5%	10%	5%	43%	4%	2%	77%	2%	0%	0%	2%

Notes: This table satisfies the reporting mandate under Penal Code section 1320.35(f)(2)(A). Total bookings from Tables 3a, 3b, and 3c sum to Tables 3a, 3b, 3c and 3d sum to 434,331. Individuals not classified as black, white, or Hispanic are not shown in this table. These data are drawn exclusively from jail booking data and release types correspond to jail release types. Releases to pretrial supervision are included under OR release.

“C” in the zero bail column indicates these releases were included in the cite and release column.

“U” in the zero bail column indicates these releases were included in an other or unknown release category.

“M” in the zero bail column indicates these releases were included in different ways across the grouped counties. See footnote 4 for details.



**TABLE 3d. Pretrial Release Rates of All Bookings, by Race and Ethnicity (Los Angeles County)**

All Bookings		Released Within 2 Court Days								Released After 2 Court Days			
Race	Total	POST-RESOLUTION		PRETRIAL				UNKNOWN	TOTAL	PRETRIAL			
		Charges not Filed, Charges Dropped, or Case Dismissed	Convicted	Bail Release	Zero Bail Release	Cite & Release	OR Release	Unclear Release Type (Post-Resolution or Pretrial)	Total Released Within 2 Court Days	Bail Release	Zero Bail Release	Cite & Release	OR Release
Black	66,214	6%	4%	9%	-- <sup>B</sup>	32%	14%	5%	69%	3%	-- <sup>B</sup>	1%	2%
Hispanic	160,894	5%	5%	7%	-- <sup>B</sup>	42%	11%	4%	75%	2%	-- <sup>B</sup>	1%	2%
White	50,477	4%	5%	7%	-- <sup>B</sup>	44%	11%	3%	75%	2%	-- <sup>B</sup>	2%	2%

Note: Tables 3a, 3b, 3c and 3d sum to 434,331. New arrest bookings could not be separated out for Los Angeles in this dataset. All bookings in Los Angeles are shown on this table, including commitment bookings and other book types that are not eligible for release. These data are drawn exclusively from jail booking data and release types correspond to jail release types. Individuals not classified as black, white, or Hispanic are not shown in this table.

"B" in the zero bail column indicates these releases were included in the bail release column.

## PRETRIAL OUTCOMES

Tables 4 and 5 are derived from a joined dataset containing jail, pretrial risk assessment, court, and California Department of Justice (CA DOJ) data (N=29,886). The dataset is limited to bookings that had a bail release (indicated as “Bail”, “\$0 Bail”, or “Unknown Bail”), whether or not they had an associated pretrial risk assessment, or that were scored followed by a non-bail<sup>7</sup> pretrial release (indicated as “Lower Scores”, “Middle Scores”, or “Higher Scores”)<sup>8</sup>. The dataset is also limited to bookings with a completed pretrial period; that is, the matter was resolved during the reporting period. “Lower,” “middle,” and “higher” scores are groupings specified by the risk assessment tool maker for each risk tool.<sup>9</sup> Zero bail (“\$0 Bail”) indicates a release pursuant to emergency rule 4 of the California Rules of Court (\$0 bail schedule or local continuations of zero bail schedules). Some counties (Alameda, San Joaquin, Ventura, Tuolumne, Nevada, San Mateo, and Kings) created a special release code to identify releases that occurred under a zero-bail emergency schedule. Bail release that was not \$0 bail is labeled “Bail”. The “Unknown Bail” category is used for counties that do not differentiate between “\$0 Bail” and “Bail.” For counties that included \$0 bail release in other categories such as cite and release, \$0 bail releases of unscored individuals could not be distinguished and are not included in this table. New charges are defined as arrests with a filed charge. Offense types classified as “Unknown” or “Other” are not shown (N=809). “Unknown” or “Other” charges include infractions, wobblers, or missing data.

### PRETRIAL OUTCOMES BY OFFENSE TYPE AND RELEASE PURSUANT TO RISK ASSESSMENT OR BAIL RELEASE

---

<sup>7</sup> For counties that did not create specific release type codes for \$0 bail releases or categorize \$0 bail releases with other bail releases, \$0 bail releases may be included for scored individuals.

<sup>8</sup> Sonoma and Tuolumne used local tools earlier in the reporting period and then switched to the PSA – only the PSA scores for Sonoma and Tuolumne are shown in this table. Santa Barbara utilized both the VPRAI and VPRAIR tools during the reporting period, both are combined for these this table.

<sup>9</sup> For score ranges for each tool corresponding to each category, see Appendix B, Table B2, Risk Level Derivation, by Tool. Scores are aggregated for presentation purposes only; lower, middle, and higher scores may not be categories used by local jurisdictions.

**TABLE 4.** Court Appearance Rate, by Offense Type

County	Lower Scores	Middle Scores	Higher Scores	Bail	\$0 Bail	Unknown Bail	Other/Unknown
<input type="checkbox"/> <b>Alameda</b>							
Felony	75 %	76 %	x	85 %	64 %		x
Misdemeanor	x	x	x	76 %	79 %		x
<input type="checkbox"/> <b>Los Angeles</b>							
Felony	95 %	88 %	82 %			88 %	
Misdemeanor	99 %	96 %	95 %			87 %	
<input type="checkbox"/> <b>Sacramento</b>							
Felony	81 %	66 %	50 %	92 %			
Misdemeanor	87 %	75 %	x	93 %			
<input type="checkbox"/> <b>San Joaquin</b>							
Felony	86 %	71 %	41 %	73 %	50 %		
Misdemeanor	83 %	57 %	31 %	72 %	64 %		
<input type="checkbox"/> <b>San Mateo</b>							
Felony	x	x	x	100 %	x		
Misdemeanor	x	x	x	100 %	x		
<input type="checkbox"/> <b>Santa Barbara</b>							
Felony	93 %	89 %	87 %	90 %	93 %		
Misdemeanor	88 %	88 %	73 %	67 %	54 %		
<input type="checkbox"/> <b>Small Counties</b>							
Felony	85 %	x	x	56 %	x		x
Misdemeanor	x	x	x	x	x		x
<input type="checkbox"/> <b>Small/Medium Counties</b>							
Felony	x	x	x	86 %	100 %		x
Misdemeanor	x	x	x	80 %	x		x
<input type="checkbox"/> <b>Sonoma</b>							
Felony	x	x	x	76 %			67 %
Misdemeanor	85 %	75 %	x	78 %			58 %
<input type="checkbox"/> <b>Ventura</b>							
Felony	88 %	78 %	72 %	85 %	68 %		
Misdemeanor	x	80 %	55 %	73 %	73 %		

Notes: This table satisfies the reporting mandate under Penal Code section 1320.35(f)(2)(B). An “x” indicates that the rate was not reported due to small sample size. For counties using the PSA, Lower, Middle and Higher scores correspond to scores on the PSA FTA Scale.

**TABLE 5.** No New Charge Rate, by Offense Type

County	Lower Scores	Middle Scores	Higher Scores	Bail	\$0 Bail	Unknown Bail	Other/Unknown
<b>Alameda</b>							
Felony	84 %	76 %	x	88 %	72 %		x
Misdemeanor	x	x	x	89 %	76 %		x
<b>Los Angeles</b>							
Felony	92 %	77 %	70 %			93 %	
Misdemeanor	95 %	81 %	70 %			93 %	
<b>Sacramento</b>							
Felony	88 %	74 %	49 %	90 %			
Misdemeanor	x	51 %	x	84 %			
<b>San Joaquin</b>							
Felony	96 %	88 %	69 %	86 %	57 %		
Misdemeanor	93 %	81 %	59 %	87 %	60 %		
<b>San Mateo</b>							
Felony	x	x	x	92 %	x		
Misdemeanor	x	x	x	89 %	x		
<b>Santa Barbara</b>							
Felony	98 %	82 %	69 %	86 %	53 %		
Misdemeanor	91 %	78 %	64 %	90 %	82 %		
<b>Small Counties</b>							
Felony	x	x	x	100 %	x		x
Misdemeanor	x	x	x	x	x		x
<b>Small/Medium Counties</b>							
Felony	x	x	x	89 %	100 %		x
Misdemeanor	x	x	x	94 %	x		x
<b>Sonoma</b>							
Felony	x	x	x	86 %			75 %
Misdemeanor	100 %	88 %	x	93 %			75 %
<b>Ventura</b>							
Felony	98 %	88 %	73 %	92 %	79 %		
Misdemeanor	x	93 %	58 %	91 %	71 %		

Notes: This table satisfies the reporting mandate under Penal Code section 1320.35(f)(2)(C). An “x” indicates that the rate was not reported due to small sample size. For counties using the PSA, Lower, Middle and Higher scores correspond to scores on the PSA NCA Scale.

## ASSESSMENTS

### PRETRIAL ASSESSMENTS BY AGE, GENDER, RACE AND ETHNICITY, RELEASE DECISION, AND RISK LEVEL

Tables 6 through 9 are drawn from probation department data that covers all risk assessments conducted regardless of any actions that followed the assessment (N= 124,030). These data are not matched with any other data source. The following tables may sum to less than 124,030 due to "Other," "Unknown," or missing responses that are not reported in the table.

**TABLE 6.** Number of Scored Individuals, by Age

County	18-25	26-35	36-45	46-55	56+	Total
Alameda	1,014	1,636	1,077	545	341	<b>4,613</b>
Los Angeles	17,259	28,796	15,903	7,263	4,178	<b>73,399</b>
Sacramento	3,103	6,430	4,271	1,960	1,044	<b>16,808</b>
San Joaquin	1,885	2,763	1,823	812	415	<b>7,698</b>
San Mateo	306	556	398	205	115	<b>1,580</b>
Santa Barbara	586	860	518	269	168	<b>2,401</b>
Small Counties	141	356	263	144	73	<b>977</b>
Small/Medium Counties	321	596	311	171	63	<b>1,462</b>
Sonoma	854	1,584	1,214	660	432	<b>4,744</b>
Tulare	1,314	2,201	1,570	659	325	<b>6,069</b>
Ventura	877	1,354	889	408	218	<b>3,746</b>
<b>Total</b>	<b>27,660</b>	<b>47,132</b>	<b>28,237</b>	<b>13,096</b>	<b>7,372</b>	<b>123,497</b>

Note: This table satisfies the reporting mandate under Penal Code section 1320.35(f)(2)(D).

**TABLE 7.** Number of Scored Individuals, by Gender

County	Female	Male	Total
Alameda	883	3,729	<b>4,612</b>
Los Angeles	13,432	59,976	<b>73,408</b>
Sacramento	2,867	13,941	<b>16,808</b>
San Joaquin	1,588	6,105	<b>7,693</b>
San Mateo	252	1,330	<b>1,582</b>
Santa Barbara	403	1,979	<b>2,382</b>
Small Counties	246	742	<b>988</b>
Small/Medium Counties	323	1,424	<b>1,747</b>
Sonoma	914	3,830	<b>4,744</b>
Tulare	1,180	4,875	<b>6,055</b>
Ventura	747	2,999	<b>3,746</b>
<b>Total</b>	<b>22,835</b>	<b>100,930</b>	<b>123,765</b>

Note: This table satisfies the reporting mandate under Penal Code section 1320.35(f)(2)(D).

**TABLE 8.** Number of Scored Individuals, by Race/Ethnicity

County	White	Black	Hispanic	Other	Total
Alameda	824	2,171	1,218	553	<b>4,766</b>
Los Angeles	11,762	17,378	40,666	3,631	<b>73,437</b>
Sacramento	6,073	6,280	3,392	1,063	<b>16,808</b>
San Joaquin	1,957	1,799	3,271	671	<b>7,698</b>
San Mateo	382	317	667	216	<b>1,582</b>
Santa Barbara	725	166	1,439	75	<b>2,405</b>
Small Counties	785	x	108	83	<b>988</b>
Small/Medium Counties	738	177	722	148	<b>1,785</b>
Sonoma	2,476	434	1,658	176	<b>4,744</b>
Tulare	1,518	312	4,052	188	<b>6,070</b>
Ventura	1,172	227	2,220	128	<b>3,747</b>
<b>Total</b>	<b>28,412</b>	<b>29,273</b>	<b>59,413</b>	<b>6,932</b>	<b>124,030</b>

Notes: This table satisfies the reporting mandate under Penal Code section 1320.35(f)(2)(D). An “x” indicates a count of fewer than 30.

**TABLE 9.** Number of Scored Individuals, by Risk Level

County	Lower Scores	Middle Scores	Higher Scores	Total
Alameda	2,172	1,724	870	<b>4,766</b>
Los Angeles	26,076	23,631	23,730	<b>73,437</b>
Sacramento	3,209	9,878	3,721	<b>16,808</b>
San Joaquin	2,092	2,736	2,870	<b>7,698</b>
San Mateo	517	648	417	<b>1,582</b>
Santa Barbara	708	824	873	<b>2,405</b>
Small Counties	142	355	317	<b>814</b>
Small/Medium Counties	242	490	437	<b>1,169</b>
Sonoma	408	917	577	<b>1,902</b>
Tulare	1,441	2,444	2,185	<b>6,070</b>
Ventura	789	1,488	1,470	<b>3,747</b>
<b>Total</b>	<b>37,796</b>	<b>45,135</b>	<b>37,467</b>	<b>120,398</b>

Notes: This table satisfies the reporting mandate under Penal Code section 1320.35(f)(2)(E). For counties using the PSA, score groupings were based on NCA score.

Table 10a presents judicial release decisions for scored individuals drawn from probation department records (N=38,556). Data for the counties of San Joaquin and Sonoma are not included in the table because they did not submit data on judicial decisions.<sup>10</sup> Table 10b presents data exclusively for Los Angeles. Unlike the other counties shown, data for Los Angeles only includes prearrest releases.<sup>11</sup>

Not every individual who is scored progresses to consideration for program release by a judicial officer. Even after being scored, many individuals may post bail (including \$0 bail in response to the emergency policies of the COVID-19 pandemic during a large portion of the reporting period) or may be released because their charges are dropped, or their case is dismissed. The data for many individuals who were scored are not in the table (“Other” N=71,409) because their release was not based on a decision by a judicial officer, and so they are not included under “Denied Program Release” or “Granted Program Release.” Although a judicial officer may deny a defendant a pretrial release, that individual is not precluded from securing release through bail after the judicial denial of release.

**TABLE 10a.** Number of Scored Individuals, by Judicial Release Decision

County	Denied Program Release	Granted Program Release	Total
Alameda	617	947	1,564
Sacramento	1,592	2,112	3,704
San Mateo	278	198	476
Santa Barbara	975	450	1,425
Small Counties	165	334	499
Small/Medium Counties	438	322	760
Ventura	1,154	385	1,539
<b>Total</b>	<b>5,219</b>	<b>4,748</b>	<b>9,967</b>

Notes: This table satisfies the reporting mandate under Penal Code section 1320.35(f)(2)(E). “Granted Program Release” includes individuals released by a judicial officer on their Own Recognizance or pretrial monitoring. “Denied Program Release” includes individuals who were denied pretrial release by a judicial officer, but who may have secured release on bail after the judicial decision was made.

<sup>10</sup> Actual release outcomes for individuals in these counties are in the data, but program release denials cannot be observed because individuals denied program release may have still been released on bail.

<sup>11</sup> Los Angeles is implementing a unique two-step assessment process: In the first step, all eligible defendants will be scored prearrest using the PSA (except those who bail out); in the second step, the court will use the CCAT to assess a significant portion (approximately 20 percent) of those detained until arraignment. The data in this report are limited to PSA scores and releases in the prearrest period. Prearrest releases in Los Angeles were granted without supervision.

**TABLE 10b.** Number of Scored Individuals, by Prearrestment Judicial Release Decision for Los Angeles

County	Denied Prearrestment Program Release	Granted Prearrestment Program Release	Total
Los Angeles	26,714	1,875	28,589

Notes: This table satisfies the reporting mandate under Penal Code section 1320.35(f)(2)(E). "Granted Prearrestment Program Release" includes individuals released by a judicial officer prearrestment. "Denied Prearrestment Program Release" includes individuals who were denied prearrestment release by a judicial officer at the prearrestment review stage, but who may have secured release on bail after the judicial decision was made or by judicial decision at arraignment.

#### PRETRIAL ASSESSMENTS BY BOOKING CHARGE LEVEL

Data for booking offense type is not included in the assessment data. As a result, Table 11 includes only those assessments that have a matching booking record from jail booking records. Offense types classified as "Unknown" or "Other" are not shown. (N=113,015).

**TABLE 11.** Number of Scored Individuals, by Booking Charge Level

County	Felony	Misdemeanor	Total
Alameda	3,691	1,442	5,133
Los Angeles	44,720	28,101	72,821
Sacramento	5,922	2,017	7,939
San Joaquin	4,610	1,778	6,388
San Mateo	1,331	667	1,998
Santa Barbara	1,453	1,124	2,577
Small Counties	716	358	1,074
Small/Medium Counties	862	318	1,180
Sonoma	1,624	2,381	4,005
Ventura	2,581	598	3,179
<b>Total</b>	<b>67,510</b>	<b>38,784</b>	<b>106,294</b>

Note: This table satisfies the reporting mandate under Penal Code section 1320.35(f)(2)(E).



## SUPERVISION

### NUMBER AND PERCENT OF SCORED INDIVIDUALS BY LEVEL OF SUPERVISION

Tables 12 and 13 are based on data containing only those defendants who were scored and placed on supervision (N=4,849).

**TABLE 12.** Number of Scored Individuals, by Level of Supervision

County	Basic	Moderate	Enhanced	Unspecified	Total
Alameda	105	198	124	44	471
Sacramento	153	968	515	0	1636
San Mateo	43	60	45	0	148
Santa Barbara	119	87	58	164	428
Small Counties	138	72	84	35	329
Small/Medium Counties	x	x	x	281	297
Sonoma	176	387	765	0	1328
Ventura	0	0	0	212	212
Total	739	1778	1596	736	4849

Note: This table satisfies the reporting mandate under Penal Code section 1320.35(f)(2)(F).

An "x" indicates a count of fewer than 30. "Unspecified Supervision" includes individuals in counties that do not categorize supervision conditions into discrete levels. For counties that use discrete supervision levels, all supervision levels were collapsed into "Basic," "Moderate," and "Enhanced" supervision. The requirements for each of these supervision levels varies widely across counties, and sometimes within counties over the data collection period. Ventura did not submit data on discrete levels of supervision. Prearrest release in Los Angeles was granted without supervision conditions. The supervision level is shown only for individuals for whom the release decision indicated a release to supervision. San Joaquin did not submit data for the release decision.

**TABLE 13.** Percentage of Scored Individuals, by Level of Supervision

County	Basic	Moderate	Enhanced	Unspecified
Alameda	22 %	42 %	26 %	9 %
Sacramento	9 %	59 %	31 %	0
San Mateo	29 %	41 %	30 %	0
Santa Barbara	28 %	20 %	14 %	38 %
Small Counties	42 %	22 %	26 %	11 %
Small/Medium Counties	x	x	x	95 %
Sonoma	13 %	29 %	58 %	0
Ventura	0	0	0	100 %
Total	15 %	37 %	33 %	15 %

Notes: This table satisfies the reporting mandate under Penal Code section 1320.35(f)(2)(F). An "x" indicates that a percentage was not calculated due an underlying count of fewer than 30.

## OUTCOMES FOR SCORED INDIVIDUALS BY LEVEL OF SUPERVISION

Tables 14 through 16 are derived from data containing only those defendants who were scored and placed on supervision, with data that could be matched across jail, assessment, court, and CA DOJ datasets, and whose cases have been resolved. (N=2,622)

**TABLE 14.** Number of FTAs and New Arrests, by Level of Supervision

County	FTAs	New Arrests	Total
<input type="checkbox"/> <b>Alameda</b>			
Basic	114	154	341
Moderate	x	x	x
<input type="checkbox"/> <b>Sacramento</b>			
Basic	9	15	41
Moderate	97	121	246
Enhanced	76	84	132
<input type="checkbox"/> <b>San Joaquin</b>			
Basic	7	7	73
Moderate	64	42	256
Enhanced	184	161	516
<input type="checkbox"/> <b>San Mateo</b>			
Basic	x	x	x
Moderate	x	x	x
Enhanced	x	x	x
<input type="checkbox"/> <b>Santa Barbara</b>			
Basic	4	5	81
Moderate	13	38	95
Enhanced	12	31	52
<input type="checkbox"/> <b>Small Counties</b>			
Basic	8	8	37
Moderate	x	x	x
Enhanced	x	x	x
<input type="checkbox"/> <b>Sonoma</b>			
Basic	28	30	91
Moderate	58	74	179
Enhanced	149	228	399

Notes: This table satisfies the reporting mandate under Penal Code section 1320.35(f)(2)(G). Counts of FTAs (failures to appear) and New Arrests are not reported when the total count is fewer than 30.

**TABLE 15.** Percentage of FTAs, by Level of Supervision

County	Basic	Moderate	Enhanced
Alameda	33 %	x	
Sacramento	22 %	39 %	58 %
San Joaquin	10 %	25 %	36 %
San Mateo	x	x	x
Santa Barbara	5 %	14 %	23 %
Small Counties	22 %	x	x
Sonoma	31 %	32 %	37 %

Notes: This table satisfies the reporting mandate under Penal Code section 1320.35(f)(2)(G). An “x” indicates rates were not reported due to small sample size.

**TABLE 16.** Percentage of New Arrests, by Level of Supervision

County	Basic	Moderate	Enhanced
Alameda	45 %	x	
Sacramento	37 %	49 %	64 %
San Joaquin	10 %	16%	31 %
San Mateo	x	x	x
Santa Barbara	6 %	40 %	60 %
Small Counties	22 %	x	x
Sonoma	33 %	41 %	57 %

Notes: This table satisfies the reporting mandate under Penal Code section 1320.35(f)(2)(G). An “x” indicates rates were not reported due to small sample size.

## RISK ASSESSMENT TOOL-SPECIFIC FIGURES

### PSA RISK ASSESSMENT TOOL INFORMATION

The PSA produces three separate scores—Failure to Appear (FTA), New Criminal Activity (NCA), and New Violent Criminal Activity (NVCA). This first set of figures shows PSA FTA scores corresponding to court appearance rates and PSA NCA scores corresponding to no new charge rates.

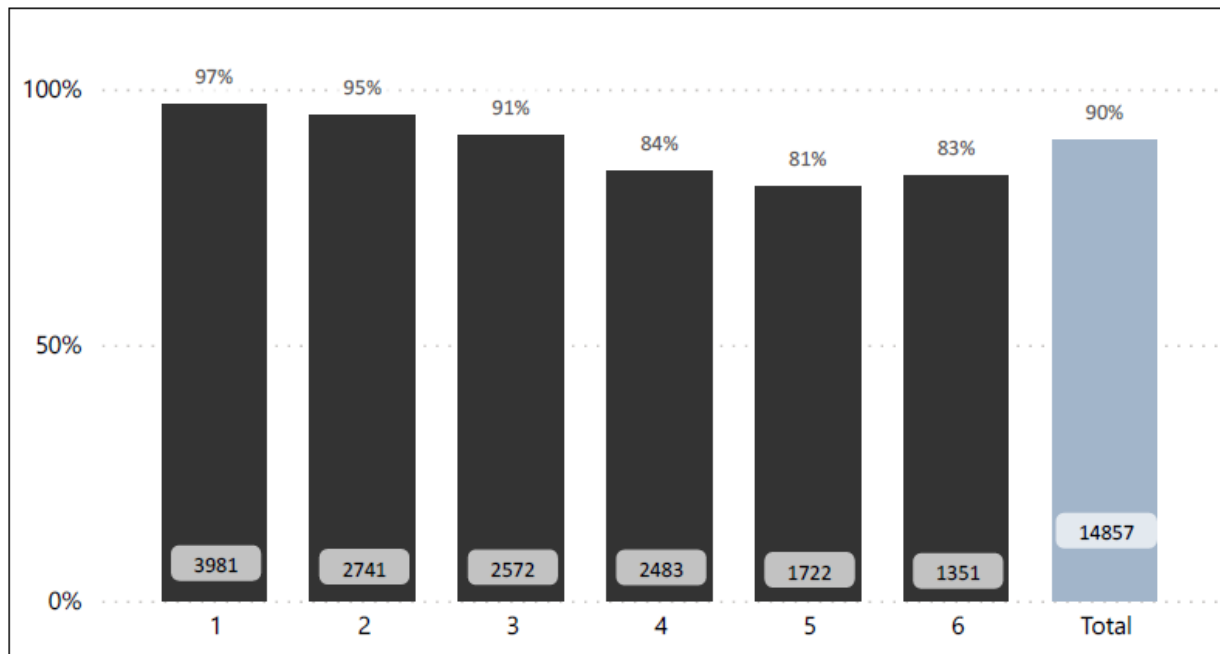
Although the PSA is designed to predict the likelihood of a new arrest, SB 36 reporting requirements define new criminal activity as offenses that resulted in an arrest and a filed charge. This table presents filed charges rather than arrests. See the Judicial Council's Pretrial Risk Assessment Tool Validation studies for more detail on how differences in definitions impact outcomes.

The PSA is the only tool that predicts NVCA. The data for PSA NVCA flags and corresponding outcomes is shown in the final seven figures in this section. The PSA uses answers from five questions to assign points. Those scoring 0 to 3 points are not assigned an NVCA flag (0); those scoring 4 to 7 points are assigned an NVCA flag (1).

### PSA OUTCOMES

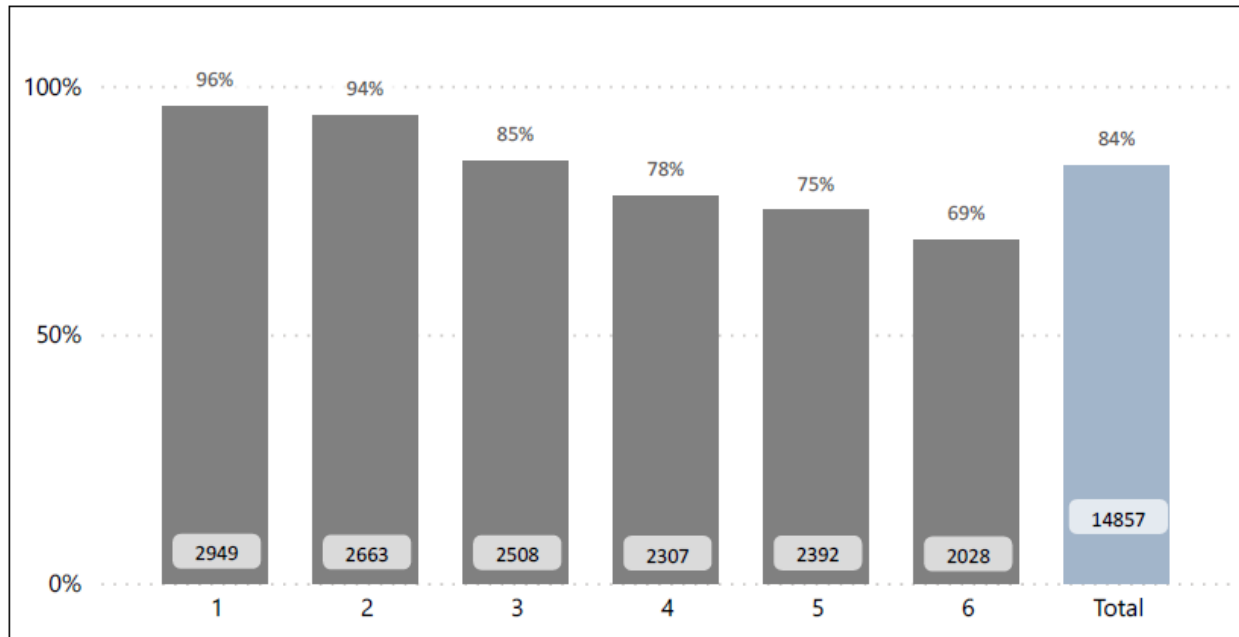
#### Overall PSA Outcomes by Risk Score

**PSA FIGURE 1.** Court Appearance Rate, by FTA Risk Score



Note: This figure satisfies the reporting mandate under Penal Code section 1320.35(f)(3)(A).

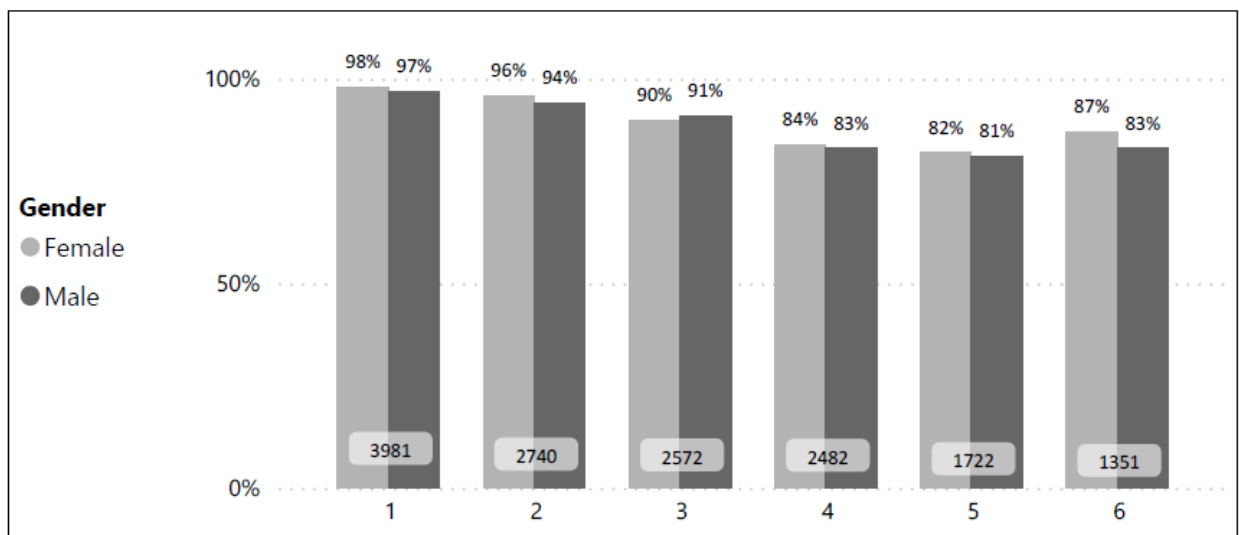
**PSA FIGURE 2.** No NCA, by NCA Risk Score



Note: This figure satisfies the reporting mandate under Penal Code section 1320.35(f)(3)(A).

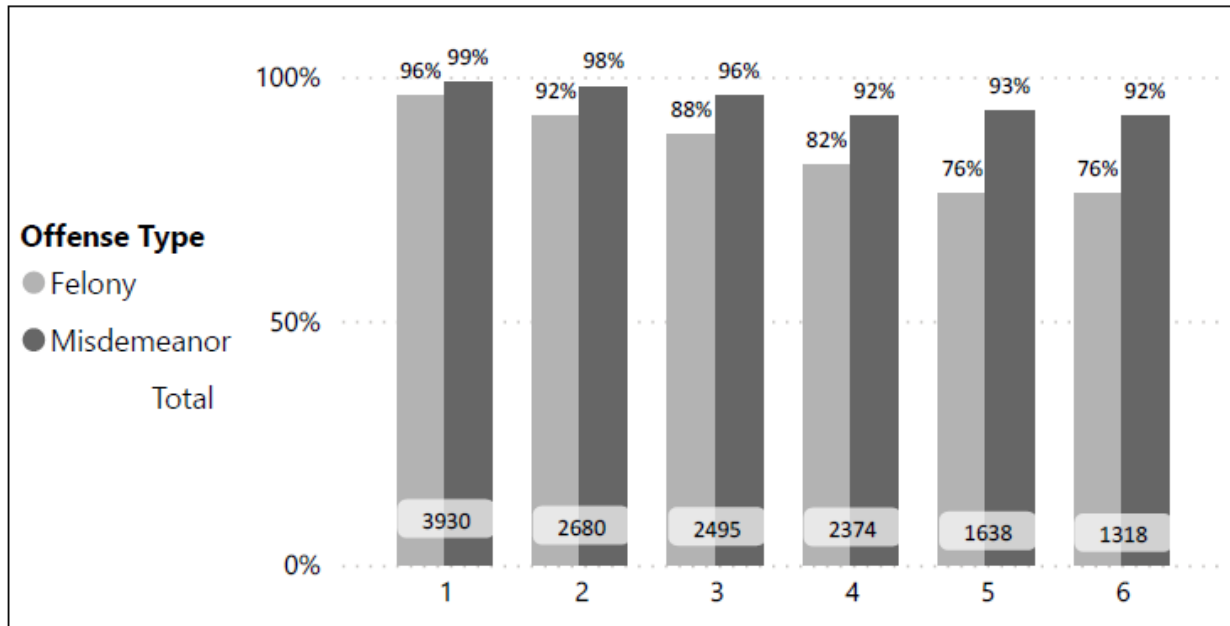
## PSA Court Appearance Rates, by Gender, Offense Type, and Race/Ethnicity

**PSA FIGURE 3.** Court Appearance Rate, by FTA Risk Score and Gender



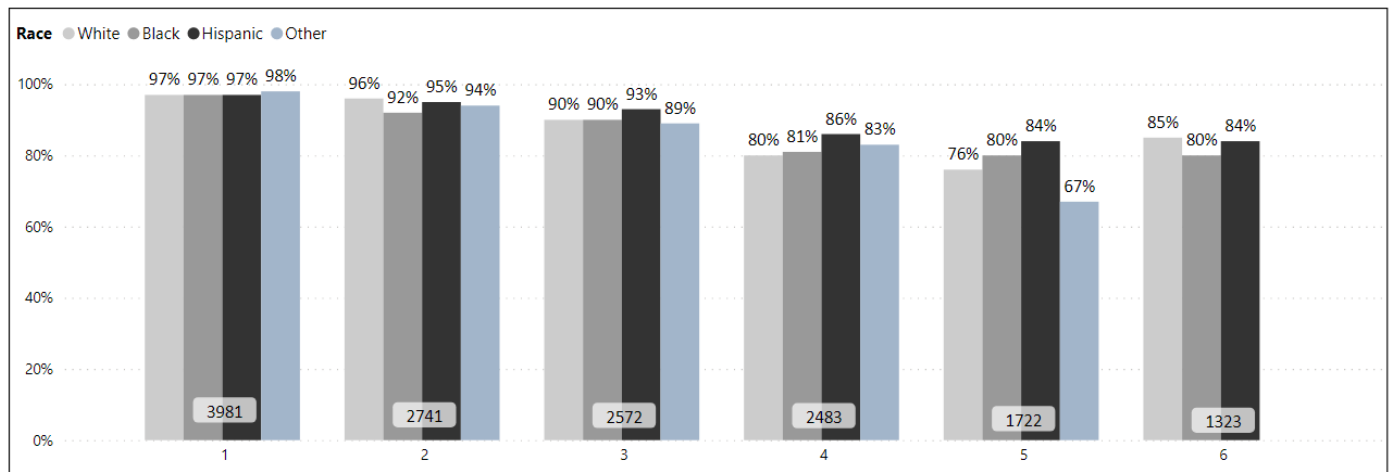
Note: This figure satisfies the reporting mandate under Penal Code section 1320.35(f)(3)(C).

**PSA FIGURE 4.** Court Appearance Rate, by FTA Risk Score and Offense Type



Note: This figure satisfies the reporting mandate under Penal Code section 1320.35(f)(3)(C).

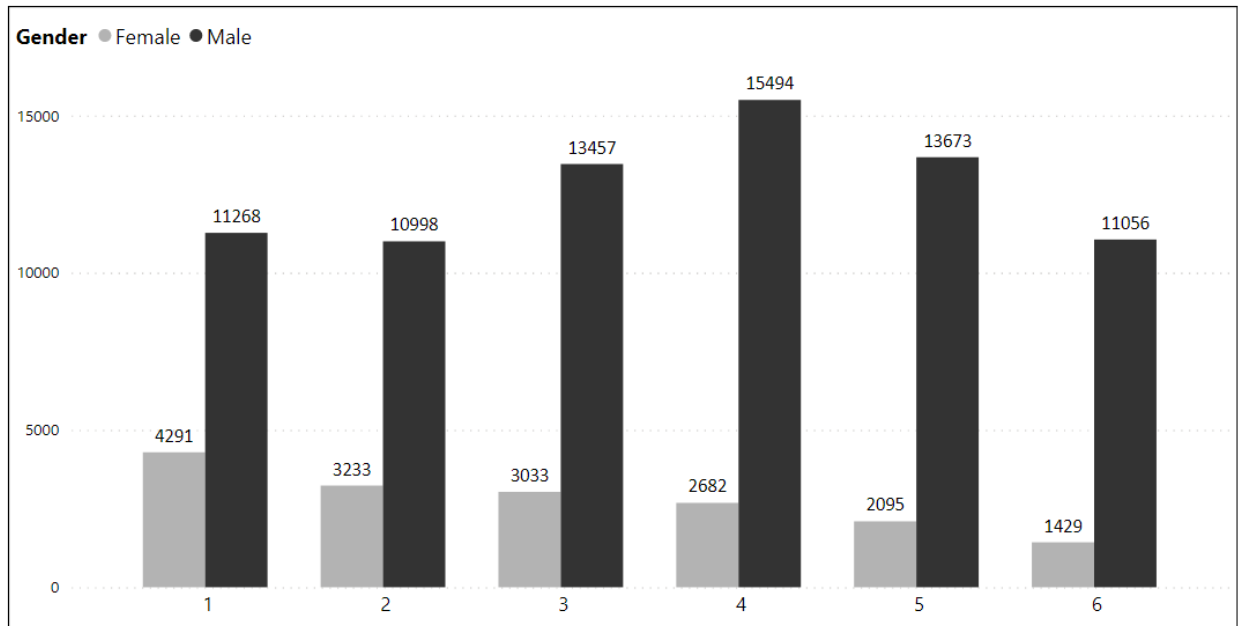
**PSA FIGURE 5.** Court Appearance Rate, by FTA Risk Score and Race/Ethnicity



Note: This figure satisfies the reporting mandate under Penal Code section 1320.35(f)(3)(C).

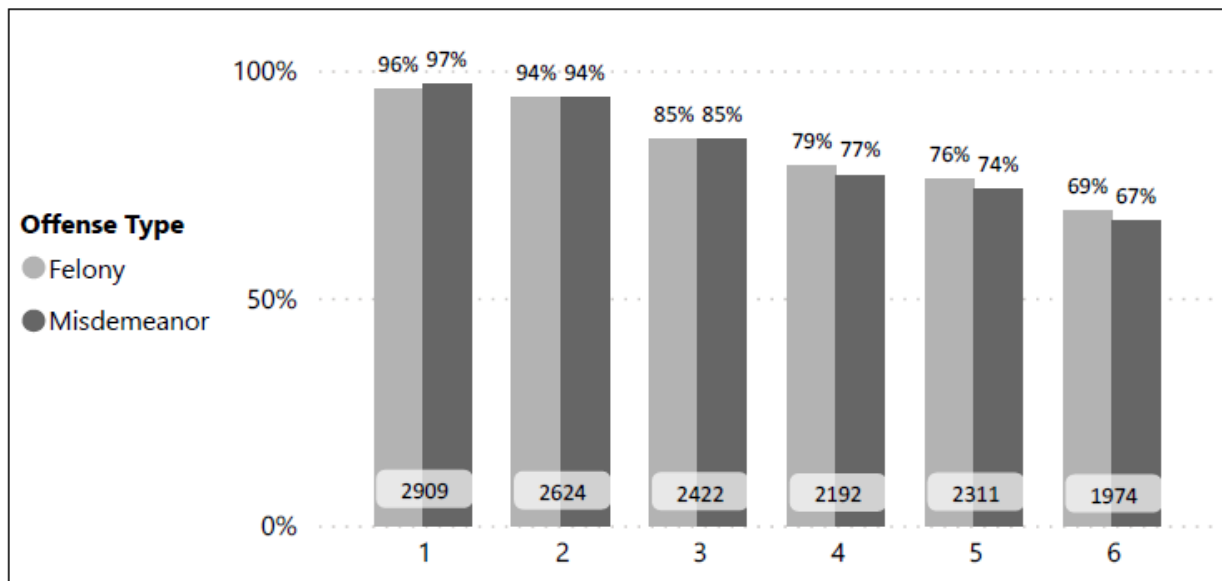
## PSA No New Criminal Activity, by Gender, Offense Type, and Race/Ethnicity

**PSA FIGURE 6.** No New Arrest Rate, by NCA Risk Score and Gender



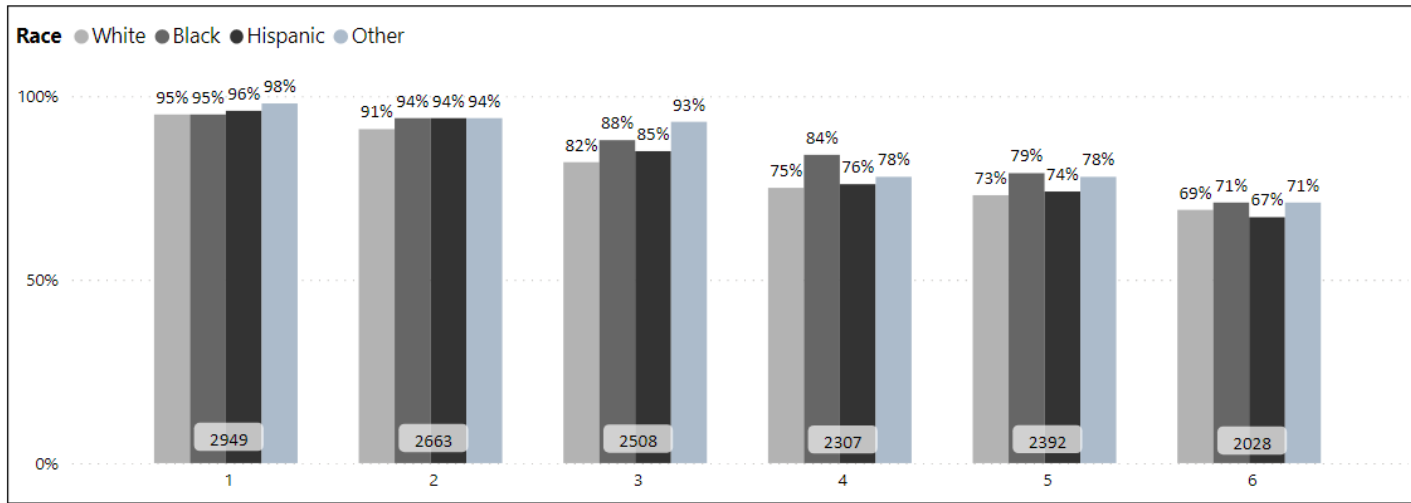
Note: This figure satisfies the reporting mandate under Penal Code section 1320.35(f)(3)(C).

**PSA FIGURE 7.** No New Arrest Rate, by NCA Risk Score and Offense Type



Note: This figure satisfies the reporting mandate under Penal Code section 1320.35(f)(3)(C).

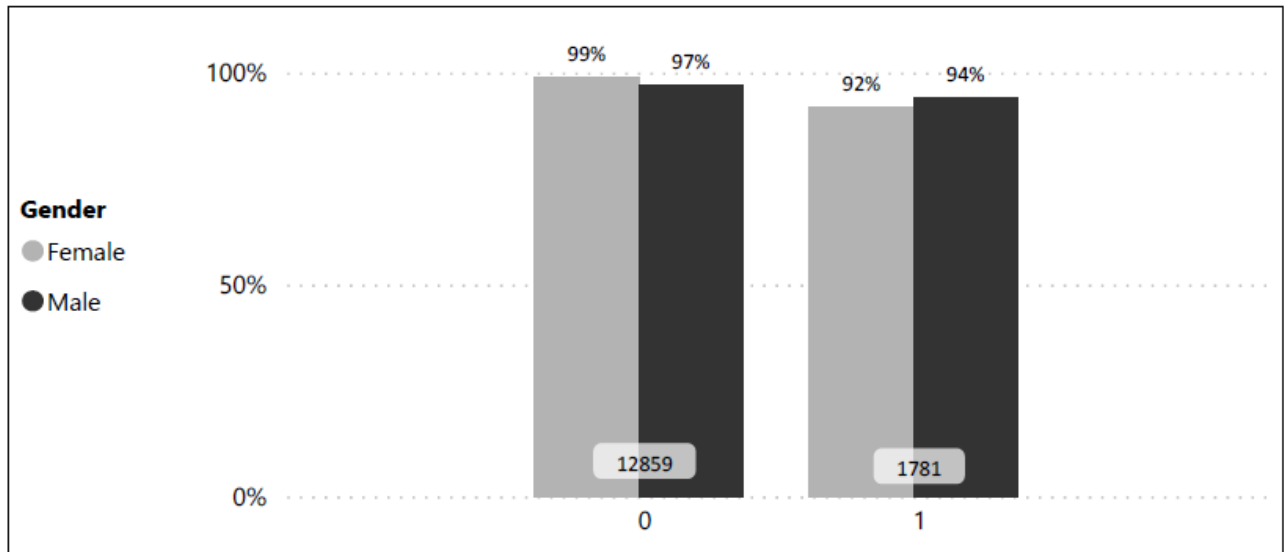
**PSA FIGURE 8.** No New Arrest Rate, by NCA Risk Score and Race/Ethnicity



Note: This figure satisfies the reporting mandate under Penal Code section 1320.35(f)(3)(C).

### No New Violent Criminal Activity, by Gender, Offense Type, and Race/Ethnicity

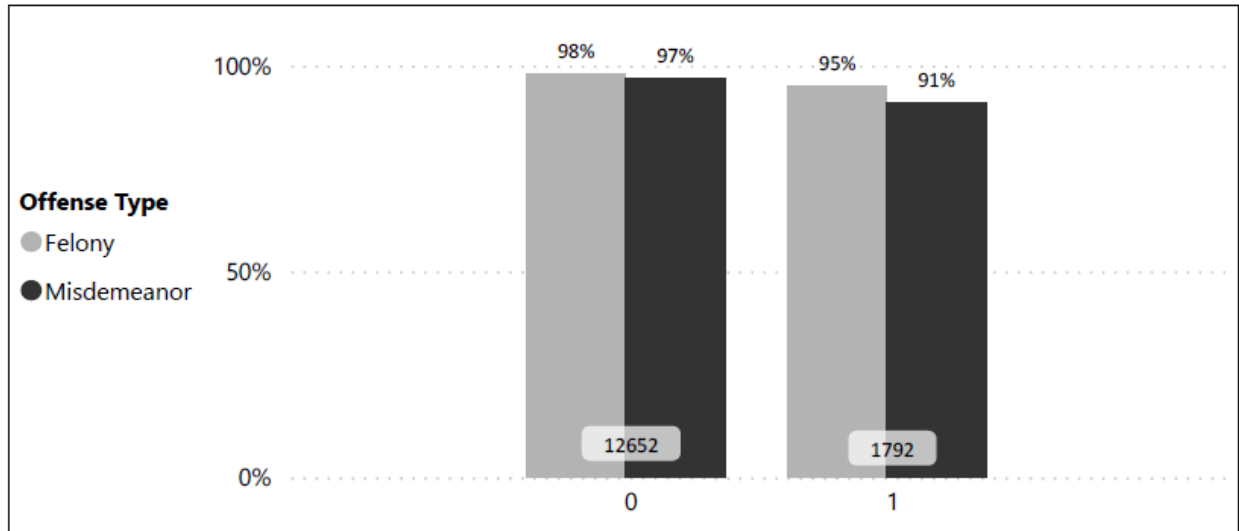
**PSA FIGURE 9.** No New Violent Arrest Rate, by NVCA Risk Flag and Gender



Note: This figure satisfies the reporting mandate under Penal Code section 1320.35(f)(3)(C). "0" indicates no NVCA flag. "1" indicates an NVCA flag.

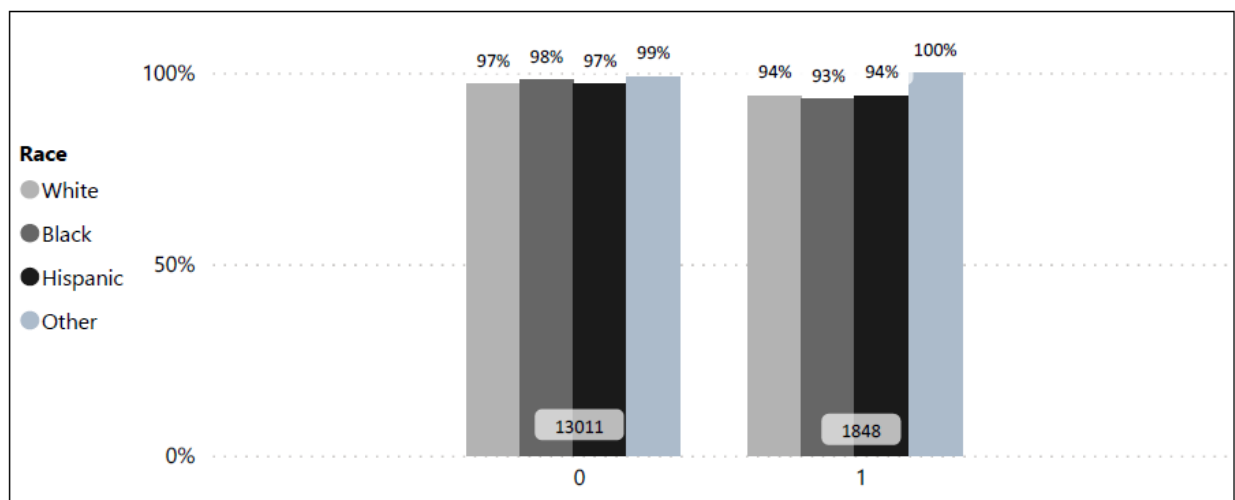


**PSA FIGURE 10.** No New Violent Arrest Rate, by NVCA Risk Flag and Offense Type



Note: This figure satisfies the reporting mandate under Penal Code section 1320.35(f)(3)(C). “0” indicates no NVCA flag. “1” indicates an NVCA flag.

**PSA FIGURE 11.** No New Violent Arrest Rate, by NVCA Risk Flag and Race/Ethnicity

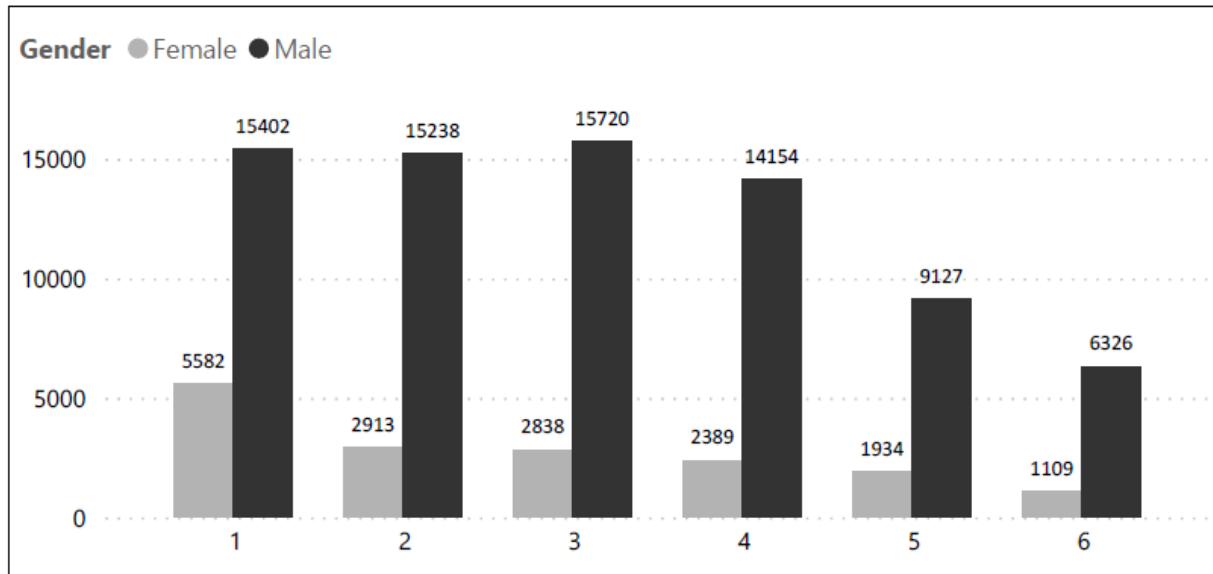


Note: This figure satisfies the reporting mandate under Penal Code section 1320.35(f)(3)(C). “0” indicates no NVCA flag. “1” indicates an NVCA flag.

## PSA RISK SCORE DISTRIBUTIONS

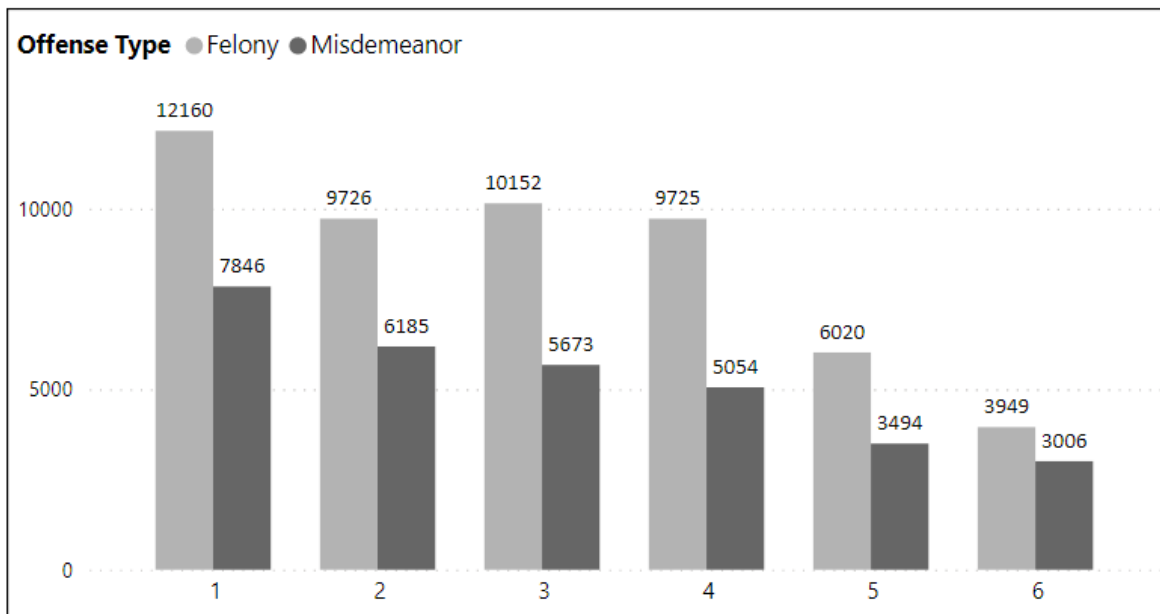
### PSA FTA Risk Score Distributions by Gender, Offense Type, Race/Ethnicity, and Release Decision

**PSA FIGURE 12.** FTA Risk Score, by Gender



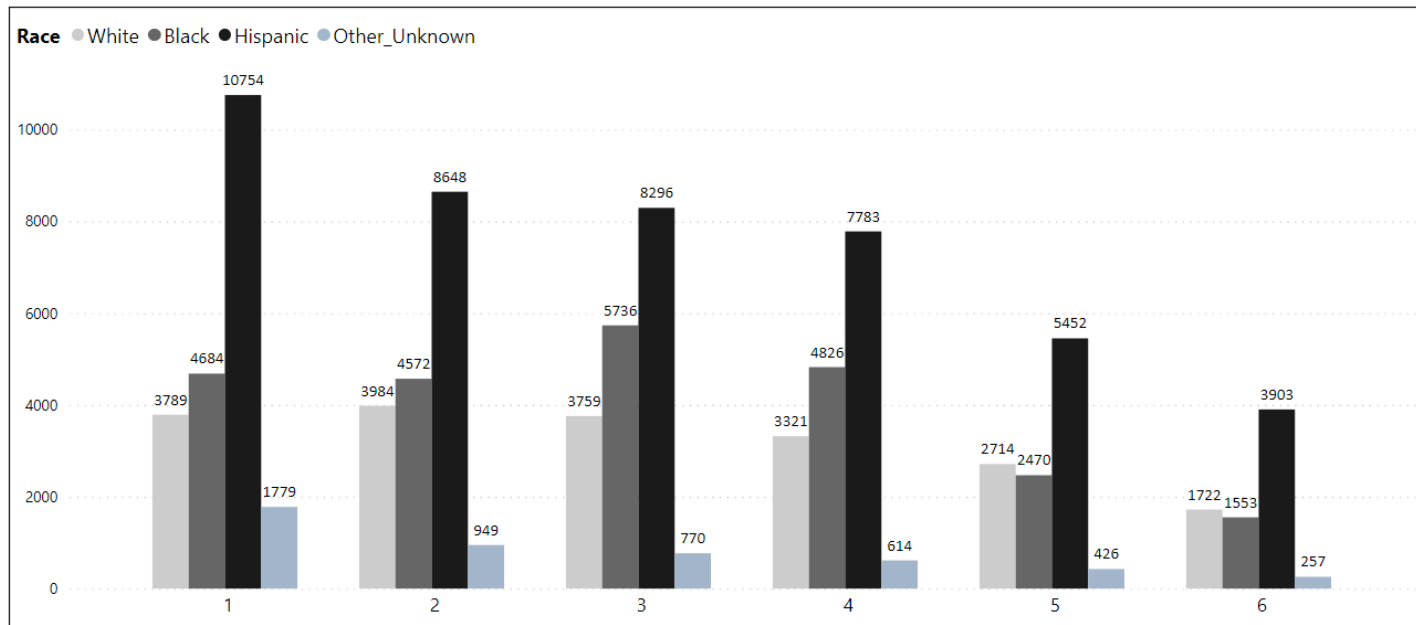
Note: This figure satisfies the reporting mandate under Penal Code section 1320.35(f)(3)(B).

**PSA FIGURE 13.** FTA Risk Score, by Offense Type



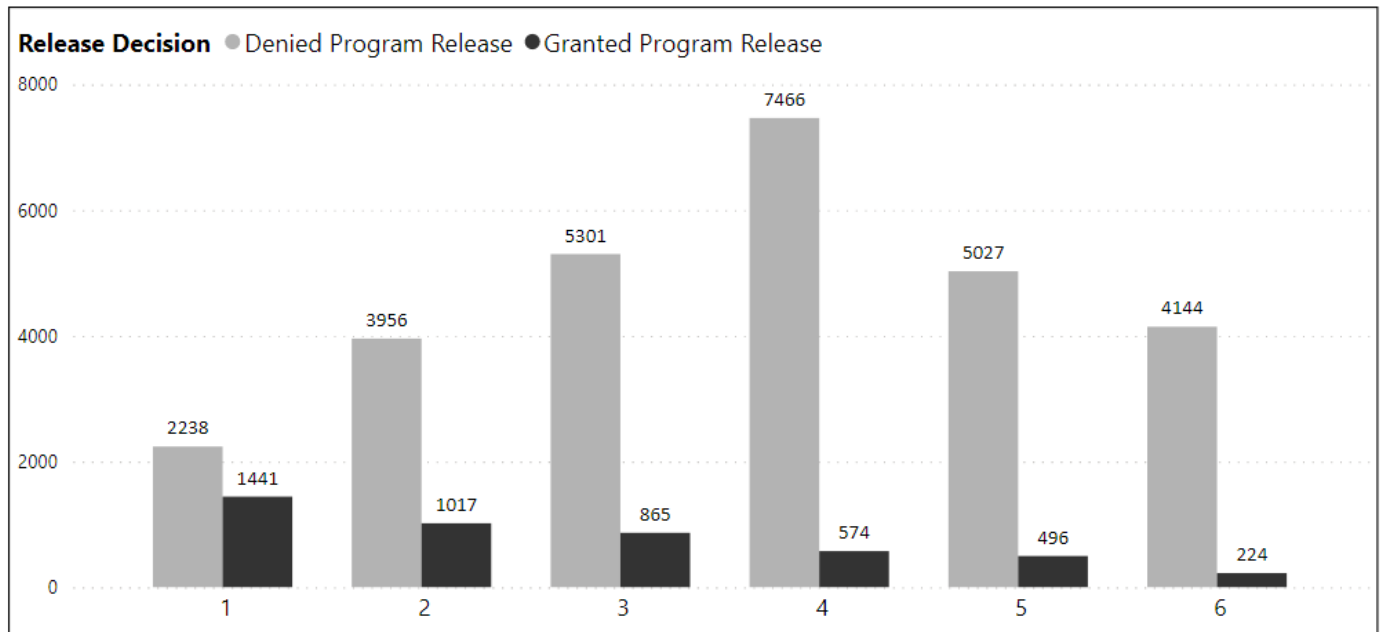
Note: This figure satisfies the reporting mandate under Penal Code section 1320.35(f)(3)(B).

**PSA FIGURE 14.** FTA Risk Score, by Race/Ethnicity



Note: This figure satisfies the reporting mandate under Penal Code section 1320.35(f)(3)(B).

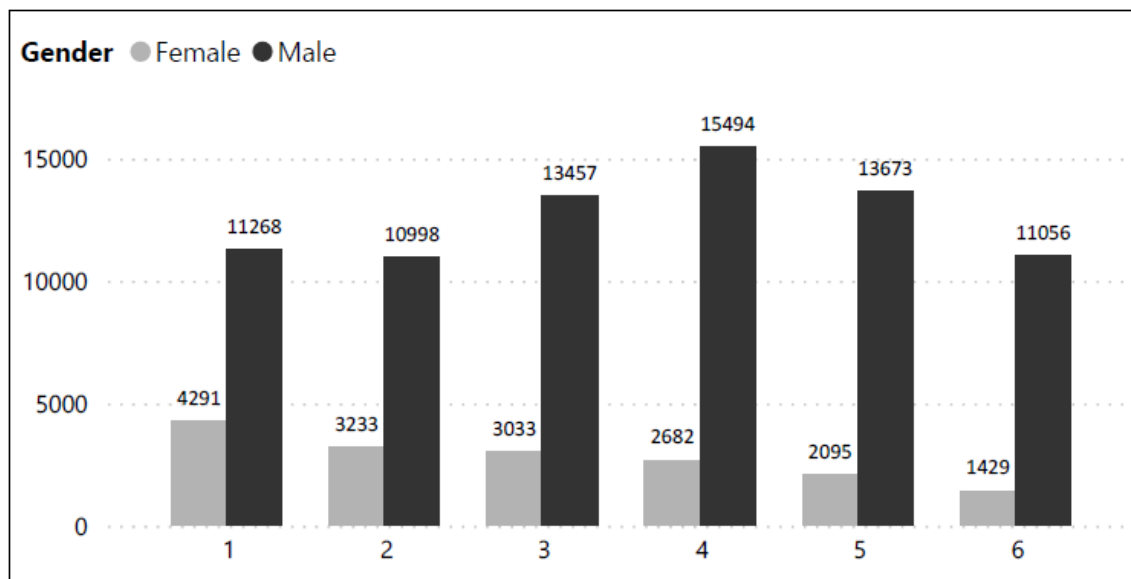
**PSA FIGURE 15.** FTA Risk Score, by Release Decision



Notes: This figure satisfies the reporting mandate under Penal Code section 1320.35(f)(3)(B). “Granted Program Release” includes individuals released on their Own Recognizance or pretrial monitoring. “Denied Program Release” indicates individuals who were denied pretrial release by a judicial officer; however, these individuals may have subsequently been released on bail. PSA data include data from Los Angeles, where program release decisions in the data only represent prearrestment judicial release decisions, and individuals denied prearrestment program release may have been released by judicial decision at arraignment.

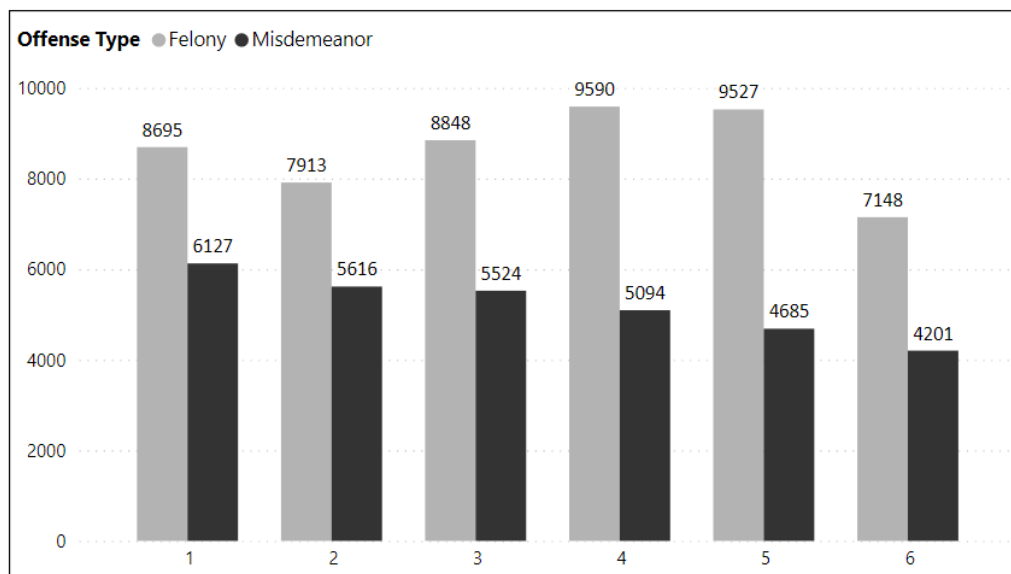
## PSA NCA Risk Score Distributions by Gender, Offense Type, Race/Ethnicity, and Release Decision

**PSA FIGURE 16.** NCA, by Risk Score and Gender



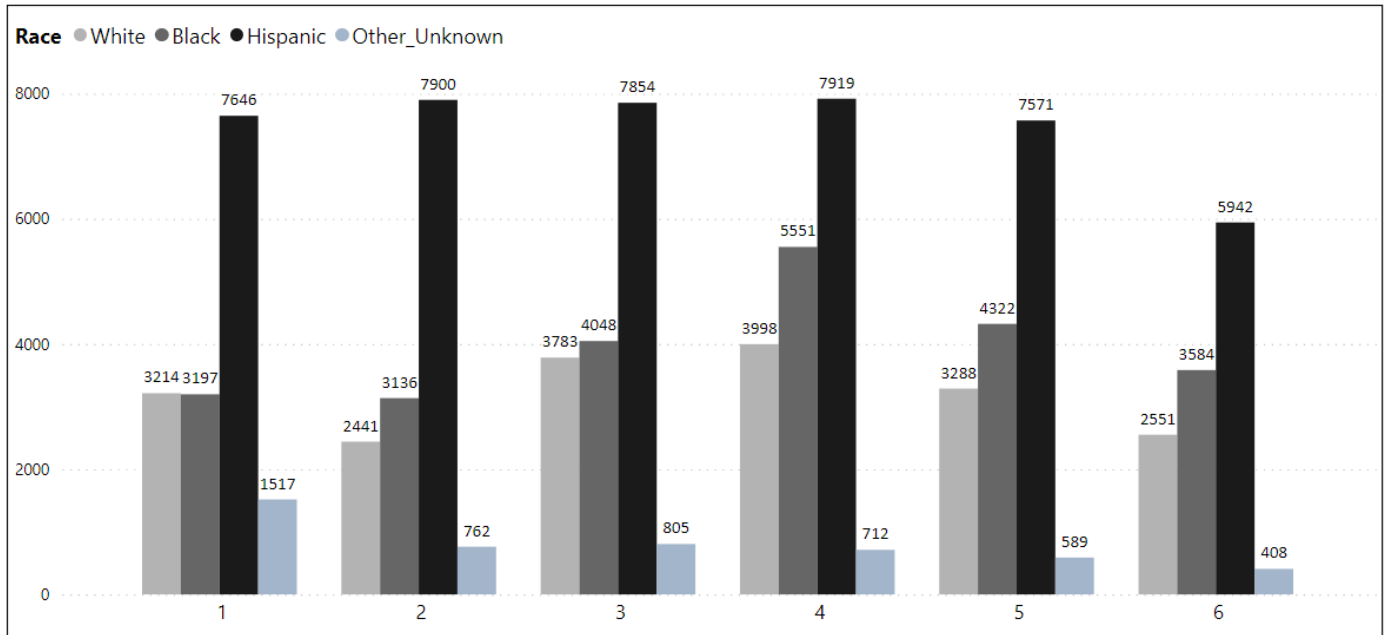
Note: This figure satisfies the reporting mandate under Penal Code section 1320.35(f)(3)(B).

**PSA FIGURE 17.** NCA, by Risk Score and Offense Type



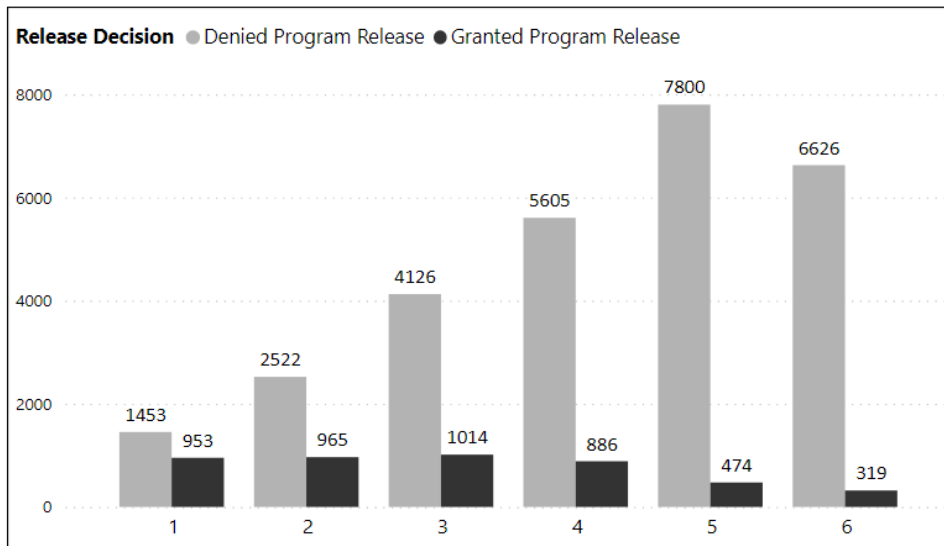
Note: This figure satisfies the reporting mandate under Penal Code section 1320.35(f)(3)(B).

**PSA FIGURE 18. NCA, by Risk Score and Race/Ethnicity**



Note: This figure satisfies the reporting mandate under Penal Code section 1320.35(f)(3)(B).

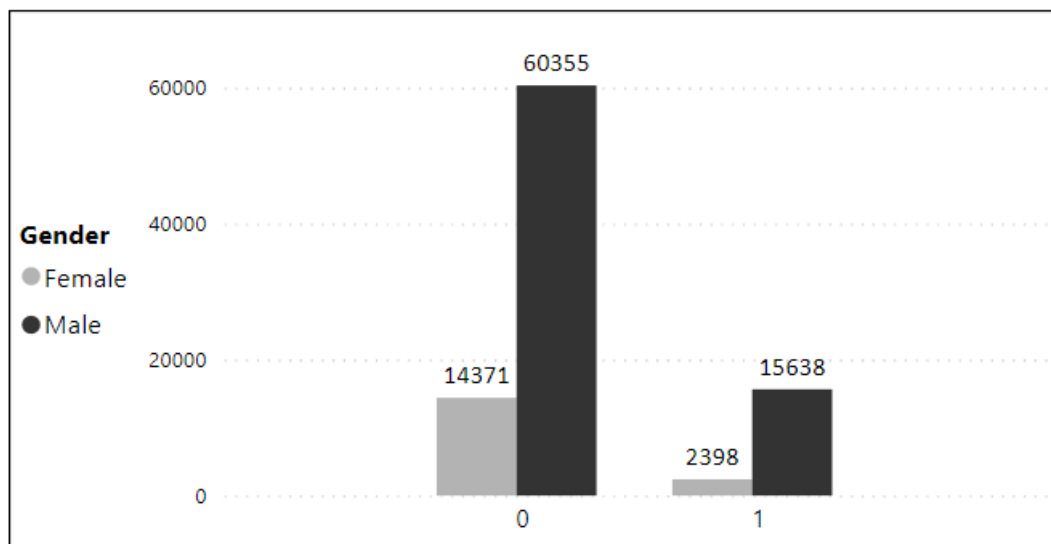
**PSA FIGURE 19. NCA, by Risk Score and Release Decision**



Note: This figure satisfies the reporting mandate under Penal Code section 1320.35(f)(3)(B). "Granted Program Release" includes individuals released on their Own Recognizance or pretrial monitoring. "Denied Program Release" indicates individuals who were denied pretrial release by judicial officers; however, these individuals may have been released on bail. PSA data include data from Los Angeles, where program release decisions in the data only represent prearrest judicial release decisions, and individuals denied prearrest program release may have been released by judicial decision at arraignment.

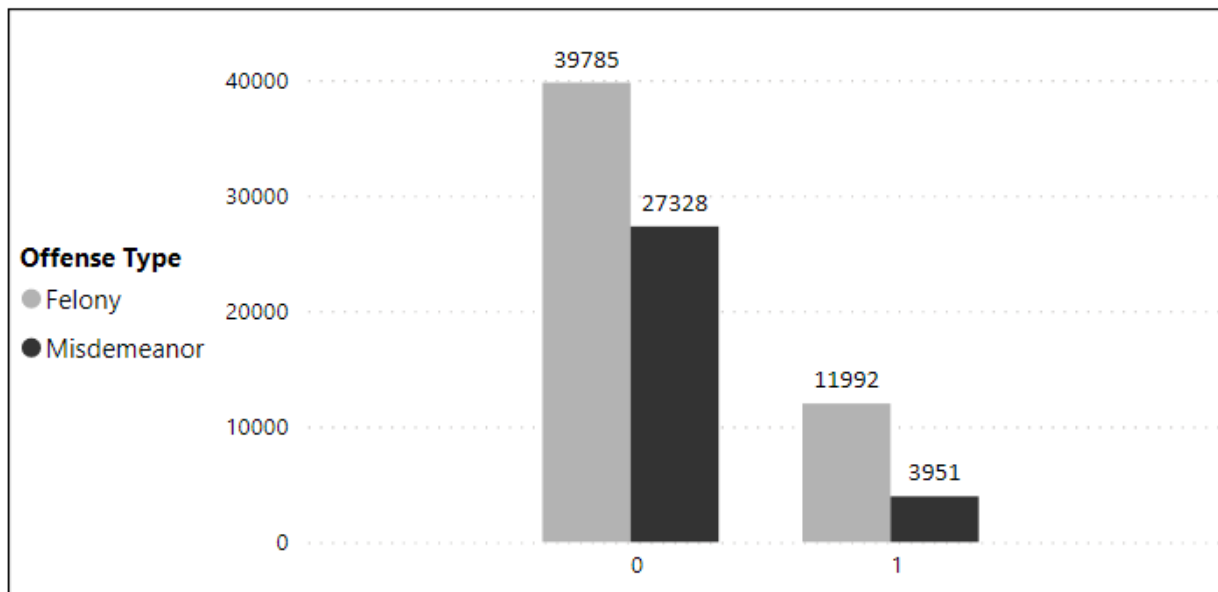
## PSA NVCA Risk Score Distributions by Gender, Offense Type, Race/Ethnicity, and Release Decision

**PSA FIGURE 20.** NVCA Risk Flag, by Gender



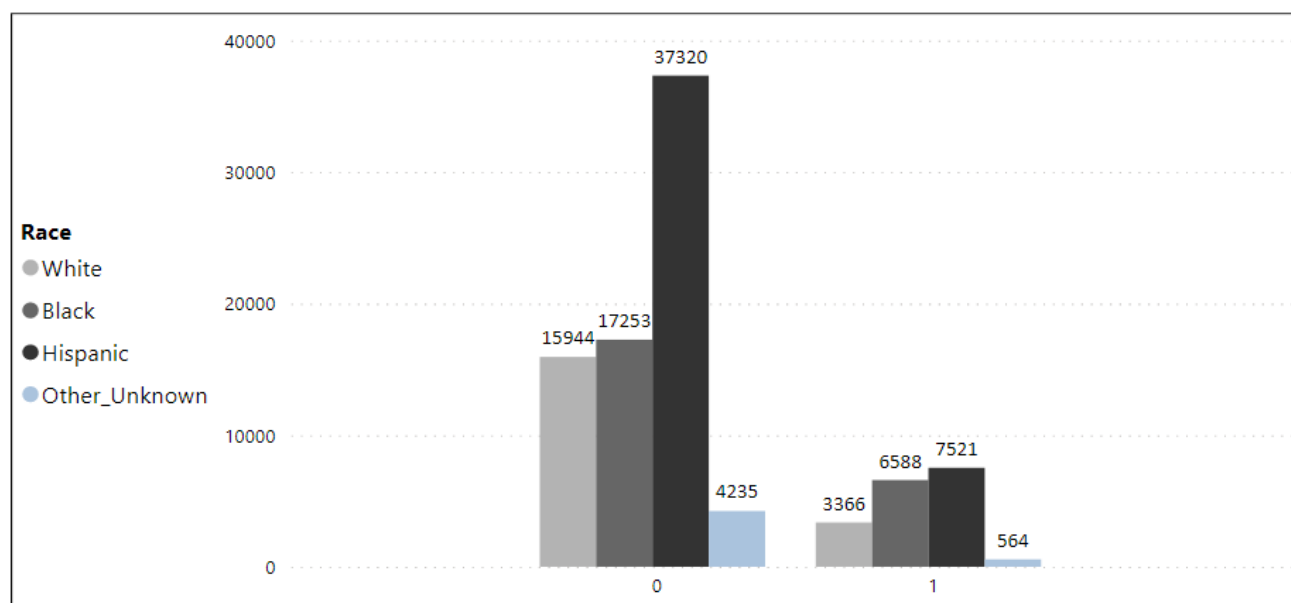
Note: This figure satisfies the reporting mandate under Penal Code section 1320.35(f)(3)(B). “0” indicates no NVCA flag. “1” indicates an NVCA flag.

**PSA FIGURE 21.** NVCA Risk Flag, by Offense Type



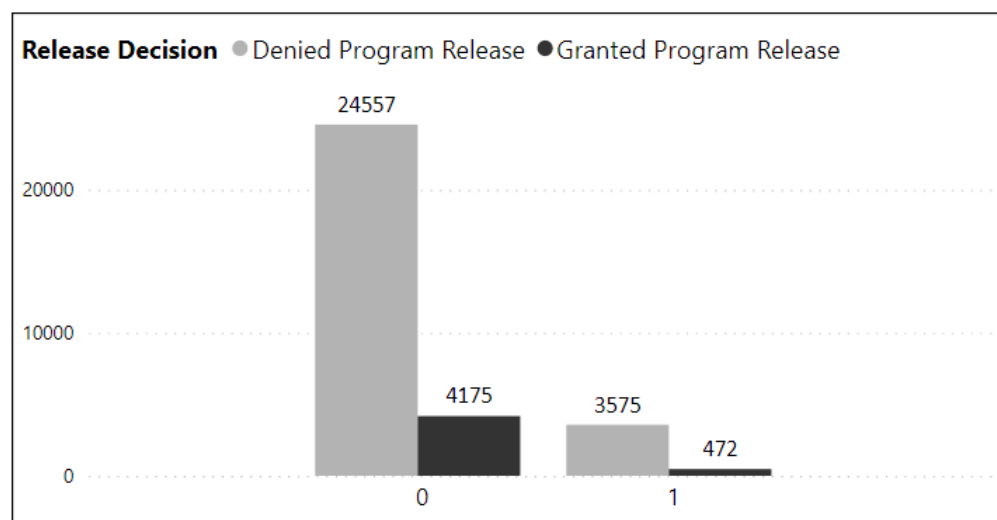
Note: This figure satisfies the reporting mandate under Penal Code section 1320.35(f)(3)(B). “0” indicates no NVCA flag. “1” indicates an NVCA flag.

**PSA FIGURE 22. NVCA Risk Flag, by Race/Ethnicity**



Note: This figure satisfies the reporting mandate under Penal Code section 1320.35(f)(3)(B). “0” indicates no NVCA flag. “1” indicates an NVCA flag.

**PSA FIGURE 23. NVCA Risk Flag, by Release Decision**



Notes: This figure satisfies the reporting mandate under Penal Code section 1320.35(f)(3)(B). “0” indicates no NVCA flag. “1” indicates an NVCA flag. “Granted Program Release” includes individuals released on their Own Recognizance or pretrial monitoring. “Denied Program Release” indicates individuals who were denied pretrial release by a judicial officer; however, these individuals may have been released on bail. PSA data include data from Los Angeles, where program release decisions in the data only represent prearrestment judicial release decisions, and individuals denied prearrestment program release may have been released by judicial decision at arraignment.

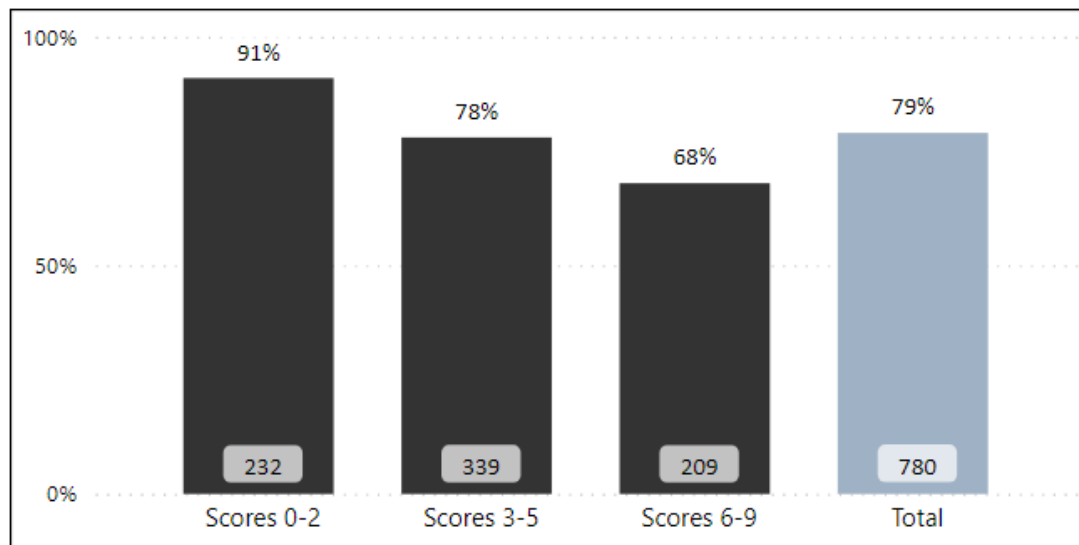
## ORAS RISK ASSESSMENT TOOL INFORMATION

Risk level in the following figures are aggregated in groupings used by the toolmaker.

### ORAS OUTCOMES

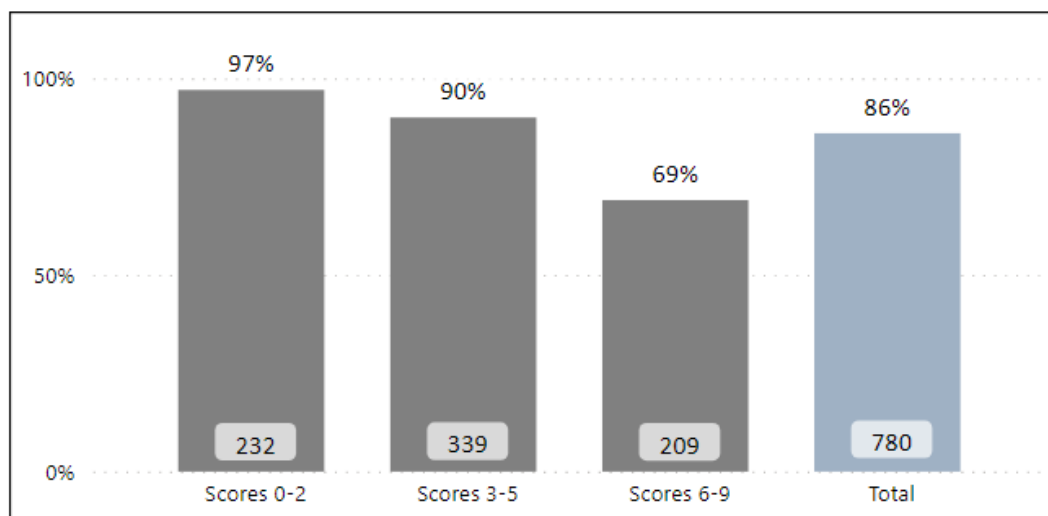
#### Overall ORAS Outcomes by Risk Score

**ORAS FIGURE 24.** Court Appearance Rate, by Risk Level



Note: This figure satisfies the reporting mandate under Penal Code section 1320.35(f)(3)(A).

**ORAS FIGURE 25.** No New Arrest Rate, by Risk Level

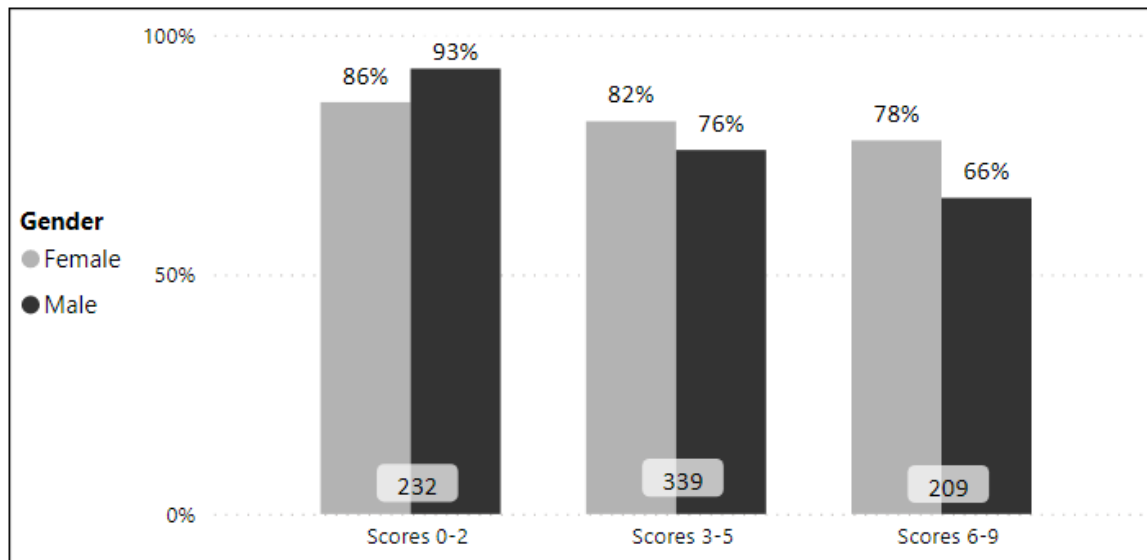


Note: This figure satisfies the reporting mandate under Penal Code section 1320.35(f)(3)(A).



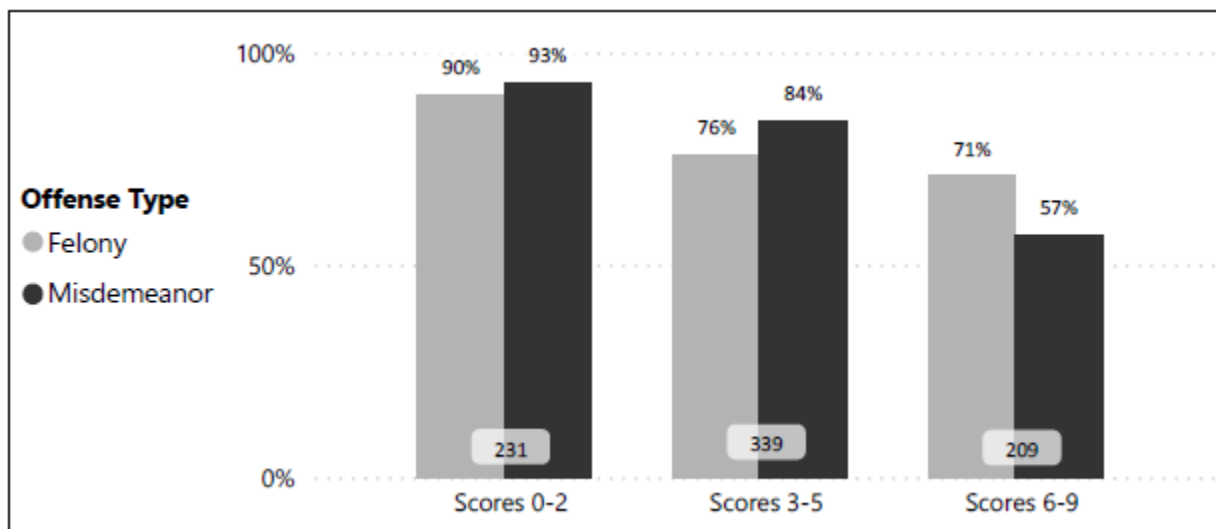
## ORAS Court Appearance Rates, by Gender, Offense Type, and Race/Ethnicity

**ORAS FIGURE 26.** Court Appearance Rate, by Risk Level and Gender



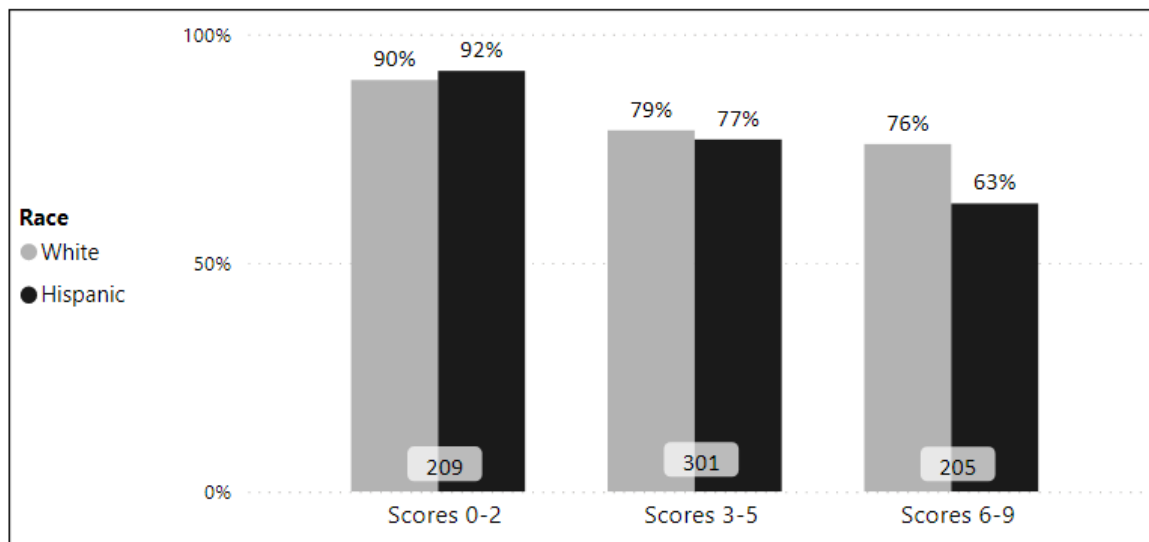
Note: This figure satisfies the reporting mandate under Penal Code section 1320.35(f)(3)(C).

**ORAS FIGURE 27.** Court Appearance Rate, by Risk Level and Offense Type



Note: This figure satisfies the reporting mandate under Penal Code section 1320.35(f)(3)(C).

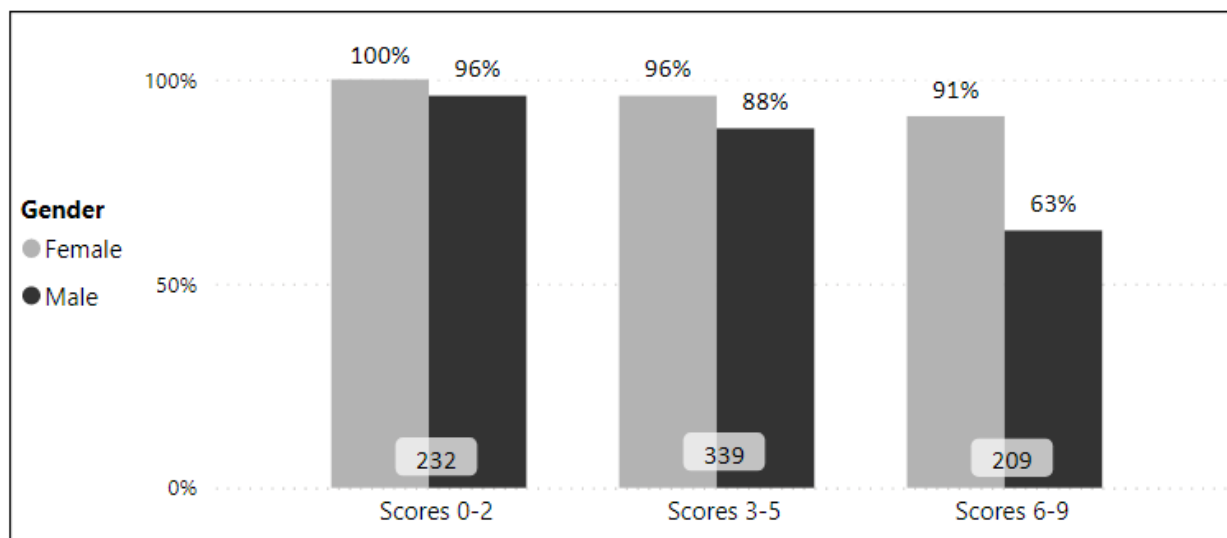
**ORAS FIGURE 28.** Court Appearance Rate, by Risk Level and Race/Ethnicity



Notes: This figure satisfies the reporting mandate under Penal Code section 1320.35(f)(3)(C). Rates for black defendants are not reported due to small sample size.

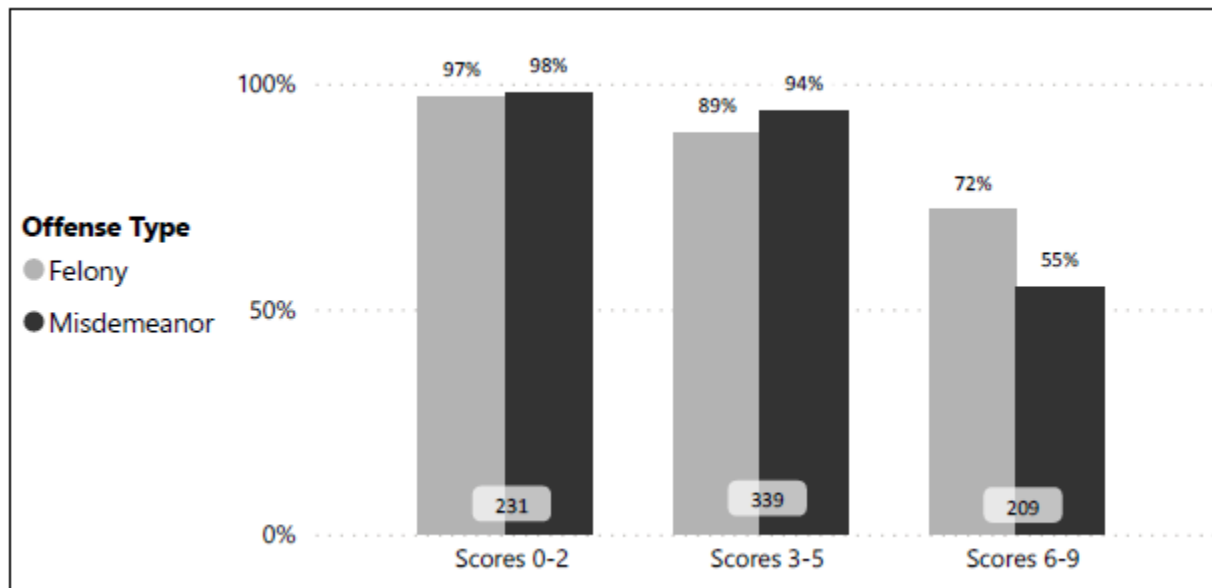
### ORAS No New Arrest Rates, by Gender, Offense Type, and Race/Ethnicity

**ORAS FIGURE 29.** No New Arrest Rate, by Risk Level and Gender



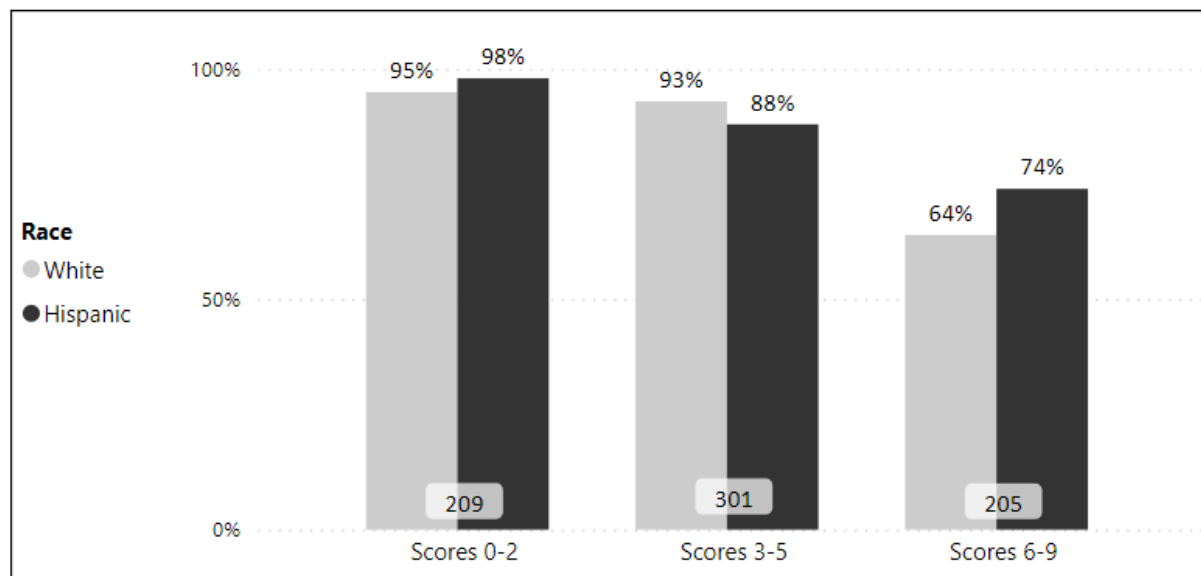
Note: This figure satisfies the reporting mandate under Penal Code section 1320.35(f)(3)(C).

**ORAS FIGURE 30.** No New Arrest Rate, by Risk Level and Offense Type



Note: This figure satisfies the reporting mandate under Penal Code section 1320.35(f)(3)(C).

**ORAS FIGURE 31.** No New Arrest Rate, by Risk Level and Race/Ethnicity



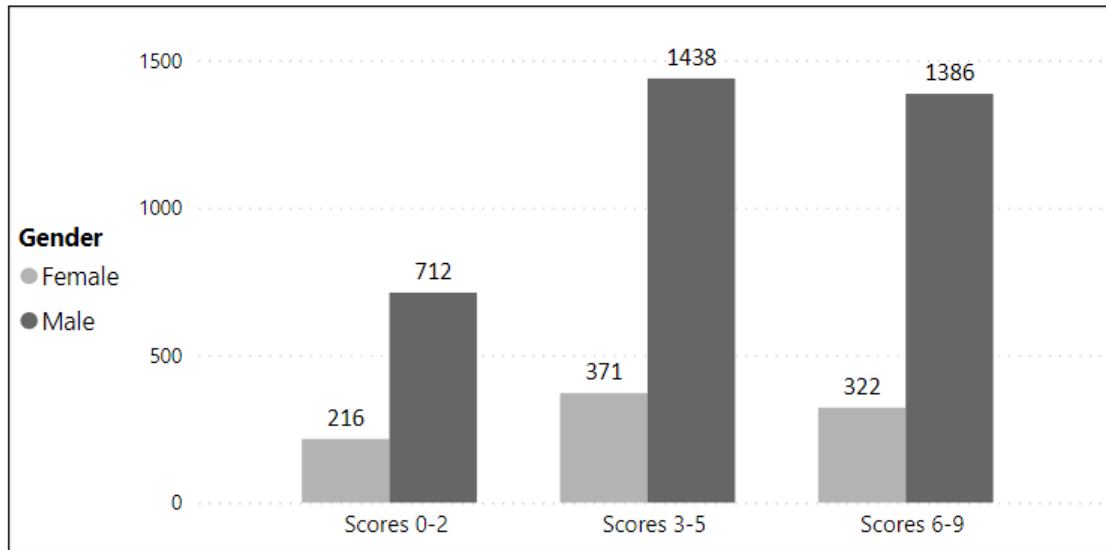
Notes: This figure satisfies the reporting mandate under Penal Code section 1320.35(f)(3)(C). Rates not reported for black defendants due to small sample size.

---

## ORAS RISK SCORE DISTRIBUTIONS

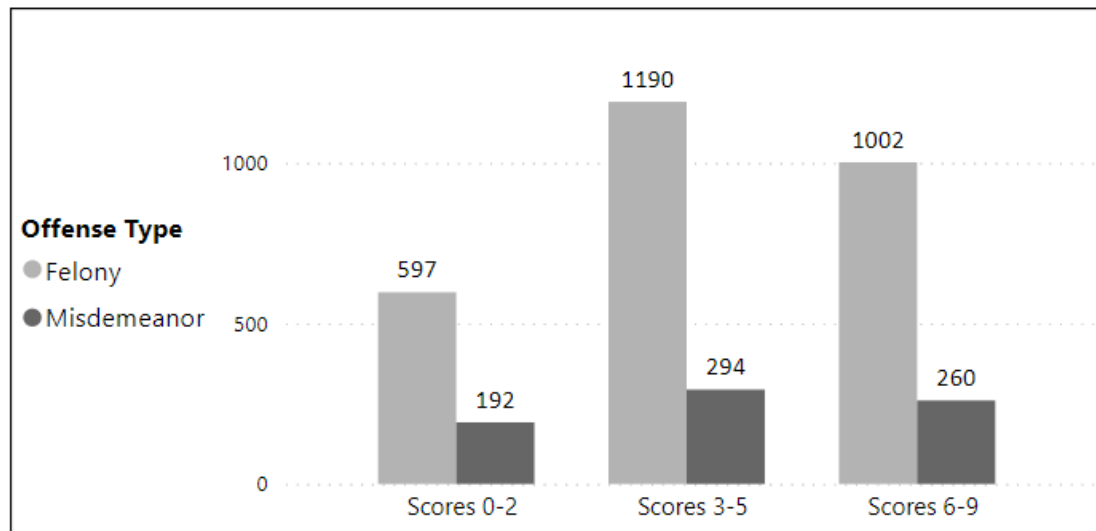
### ORAS Risk Score Distributions by Gender, Offense Type, Race/Ethnicity, and Release Decision

**ORAS FIGURE 32.** Risk Level, by Gender



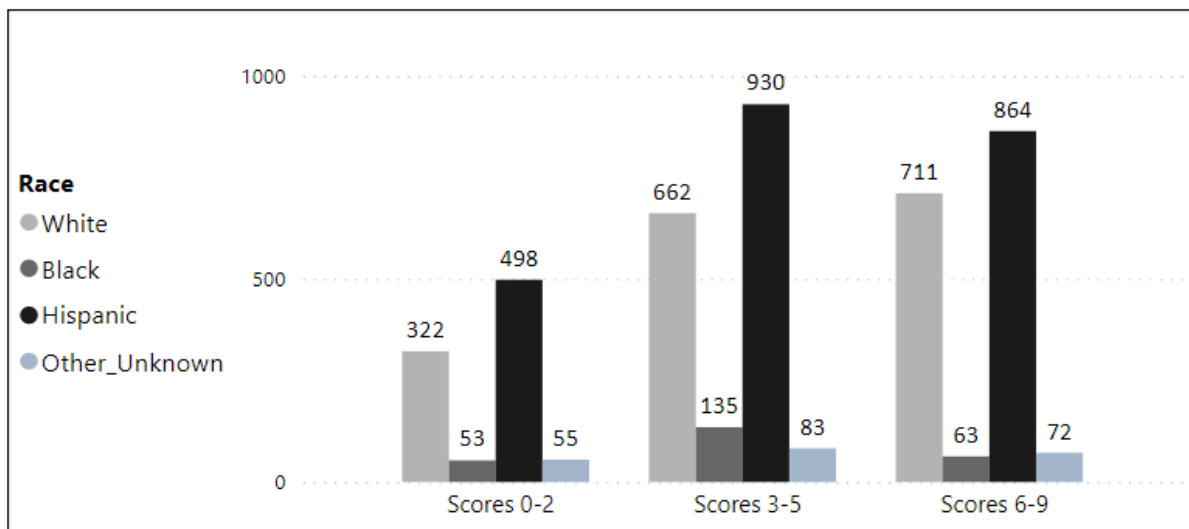
Note: This figure satisfies the reporting mandate under Penal Code section 1320.35(f)(3)(B).

**ORAS FIGURE 33.** Risk Level, by Offense Type



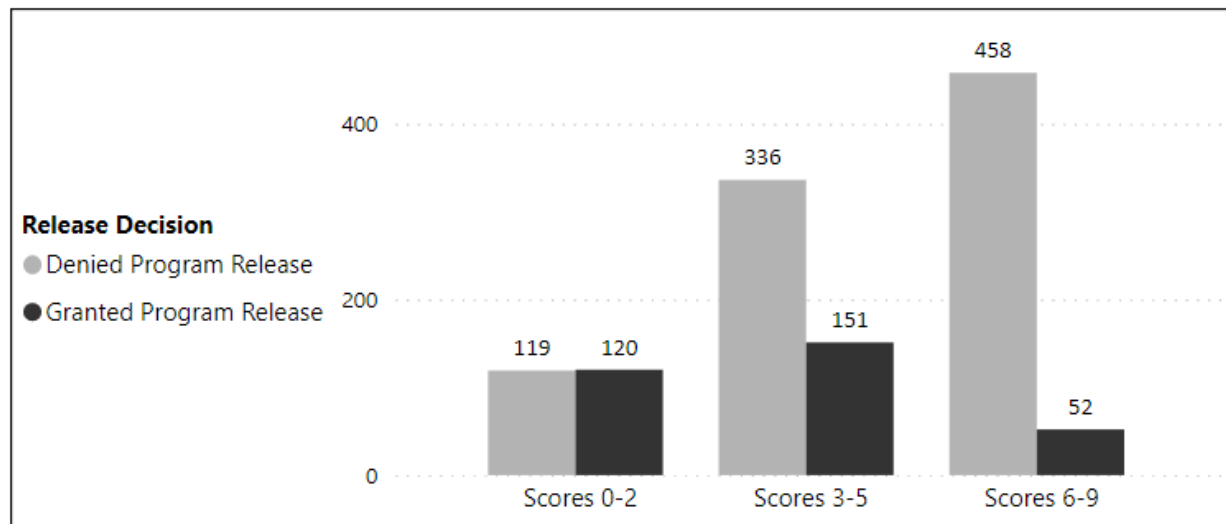
Note: This figure satisfies the reporting mandate under Penal Code section 1320.35(f)(3)(B).

**ORAS FIGURE 34. Risk Level, by Race/Ethnicity**



Note: This figure satisfies the reporting mandate under Penal Code section 1320.35(f)(3)(B).

**ORAS FIGURE 35. Risk Level, by Release Decision**



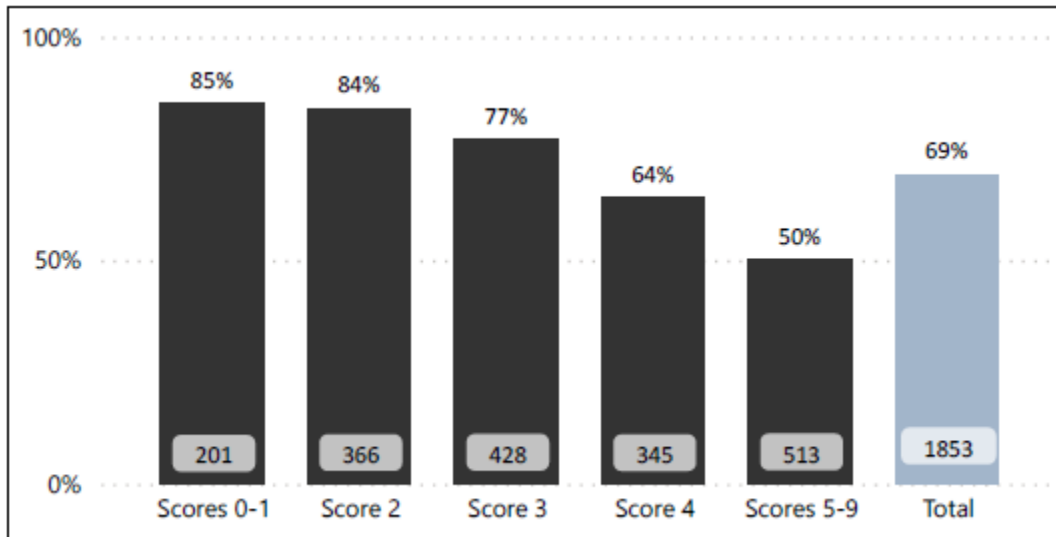
Notes: This figure satisfies the reporting mandate under Penal Code section 1320.35(f)(3)(B). "Granted Program Release" includes individuals released on their Own Recognizance or pretrial monitoring. "Denied Program Release" indicates individuals who were denied pretrial release by a judicial officer; however, these individuals may have been released on bail.

## VPRAI RISK ASSESSMENT TOOL INFORMATION

### VPRAI OUTCOMES

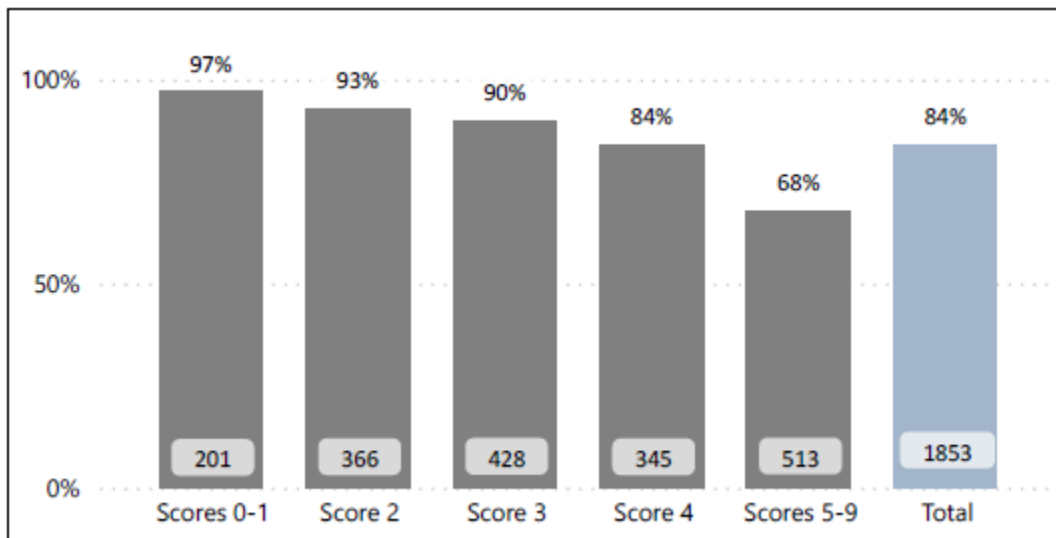
#### Overall VPRAI Outcomes by Risk Score

**VPRAI FIGURE 36.** Court Appearance Rate, by Risk Level



Note: This figure satisfies the reporting mandate under Penal Code section 1320.35(f)(3)(A).

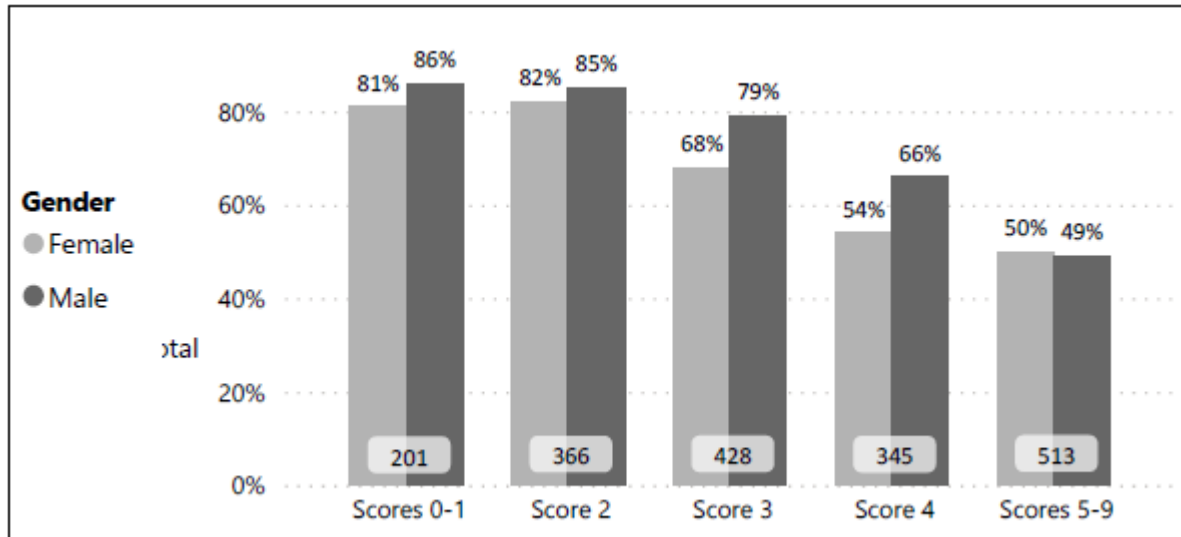
**VPRAI FIGURE 37.** No New Arrest Rate, by Risk Level



Note: This figure satisfies the reporting mandate under Penal Code section 1320.35(f)(3)(A).

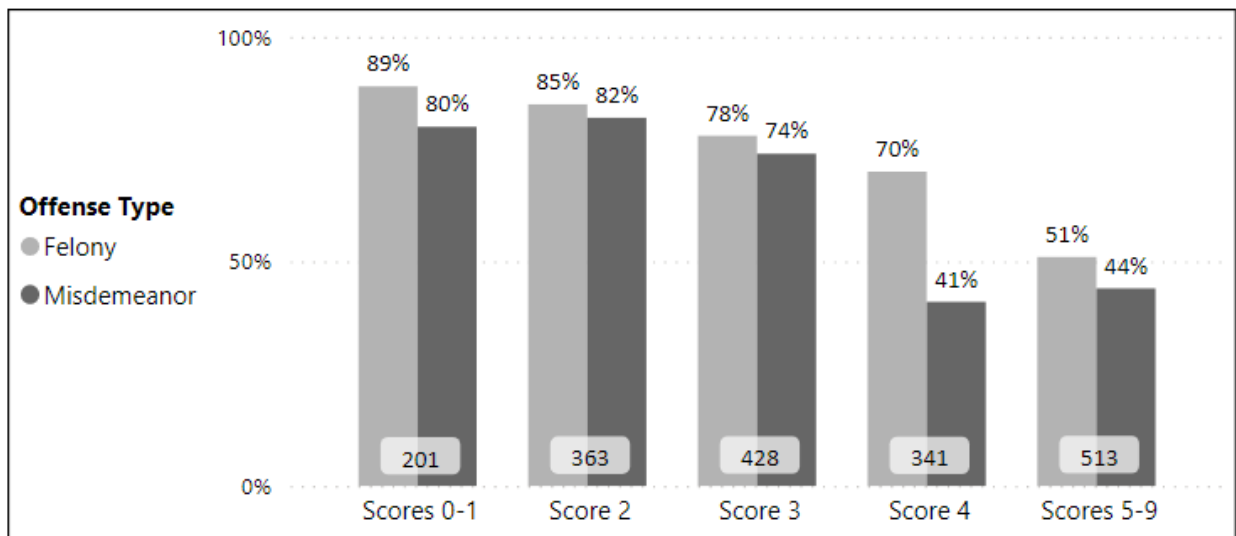
## VPRAI Court Appearance Rates, by Gender, Offense Type, and Race/Ethnicity

**VPRAI FIGURE 38.** Court Appearance Rate, by Risk Level and Gender



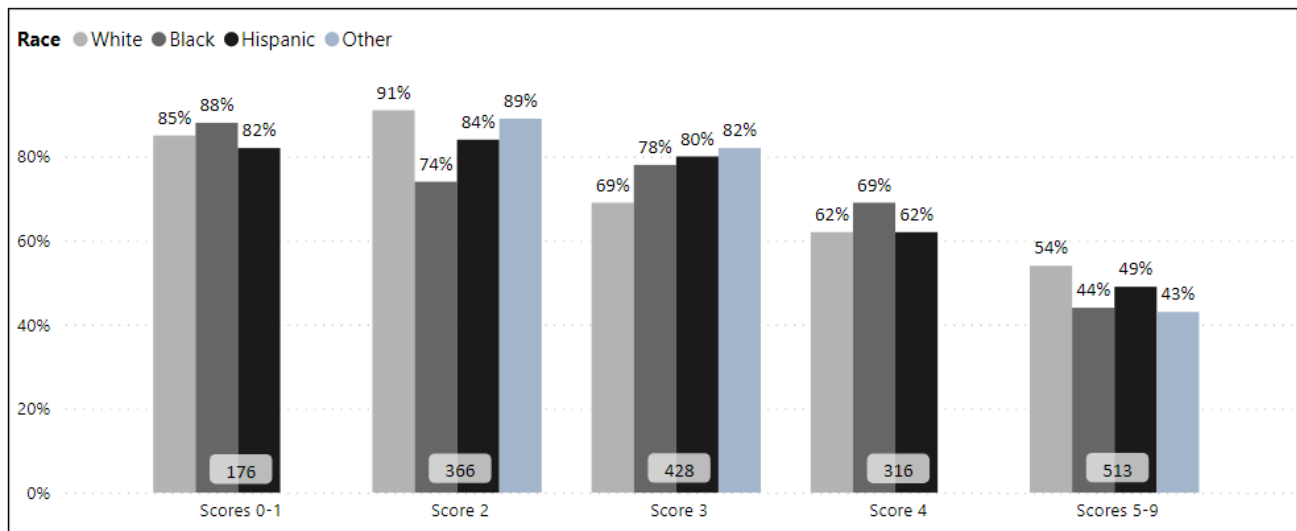
Note: This figure satisfies the reporting mandate under Penal Code section 1320.35(f)(3)(C).

**VPRAI FIGURE 39.** Court Appearance Rate, by Risk Level and Offense Type



Note: This figure satisfies the reporting mandate under Penal Code section 1320.35(f)(3)(C).

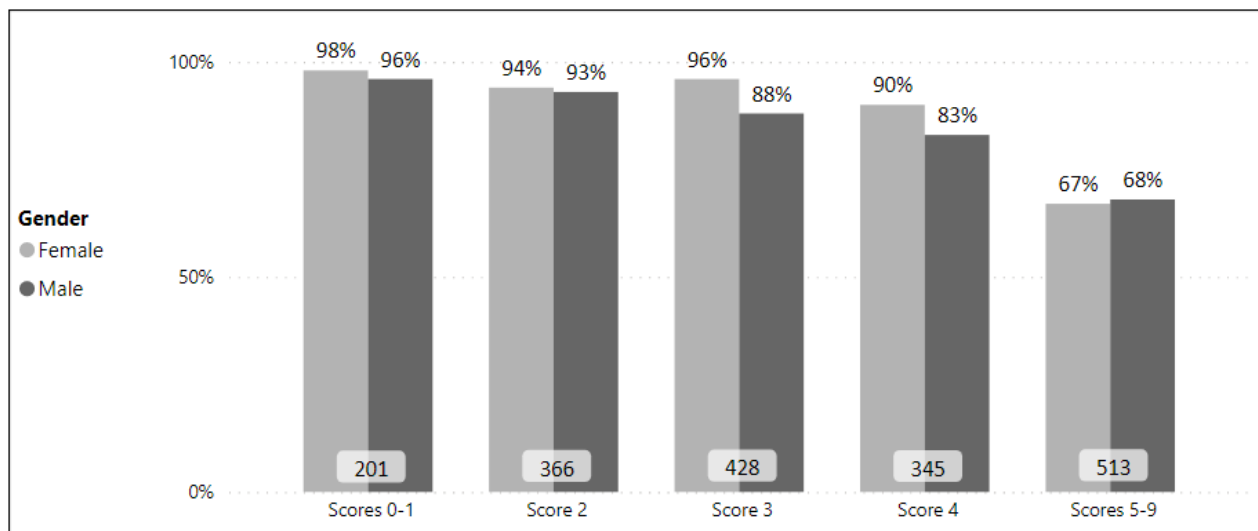
**VPRAI FIGURE 40.** Court Appearance Rate, by Risk Level and Race/Ethnicity



Notes: This figure satisfies the reporting mandate under Penal Code section 1320.35(f)(3)(C). Where court appearance rates for the “Other” category are not shown, sample size was too small to calculate a rate.

## VPRAI No New Arrest Rates, by Gender, Offense Type, and Race/Ethnicity

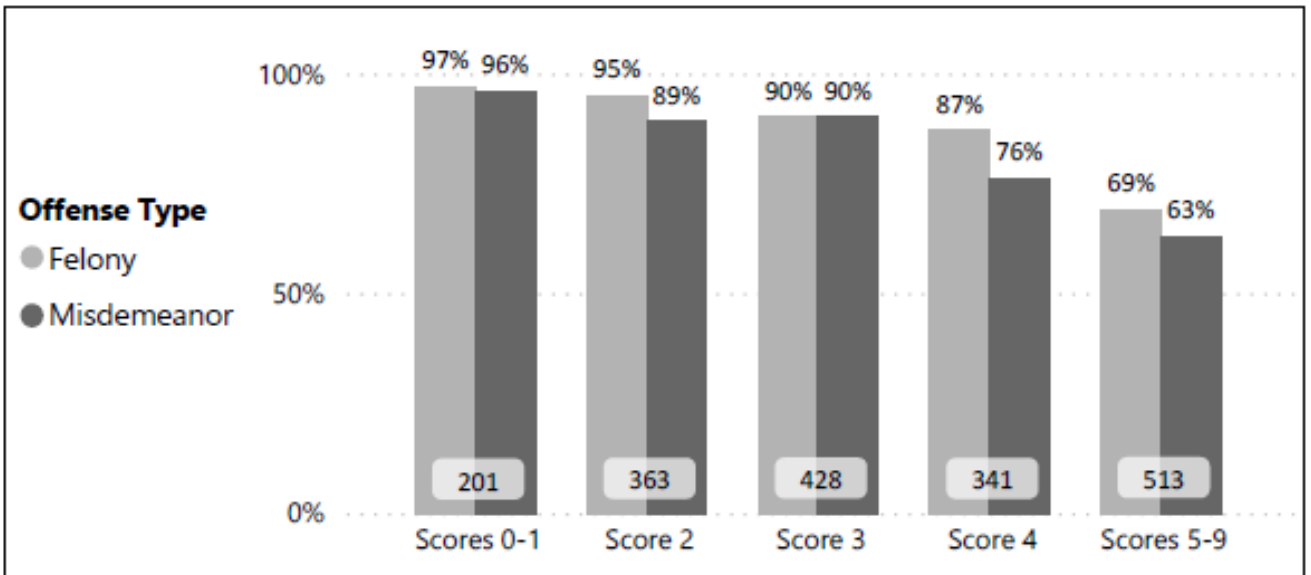
**VPRAI FIGURE 41.** No New Arrest Rate, by Risk Level and Gender



Note: This figure satisfies the reporting mandate under Penal Code section 1320.35(f)(3)(C).

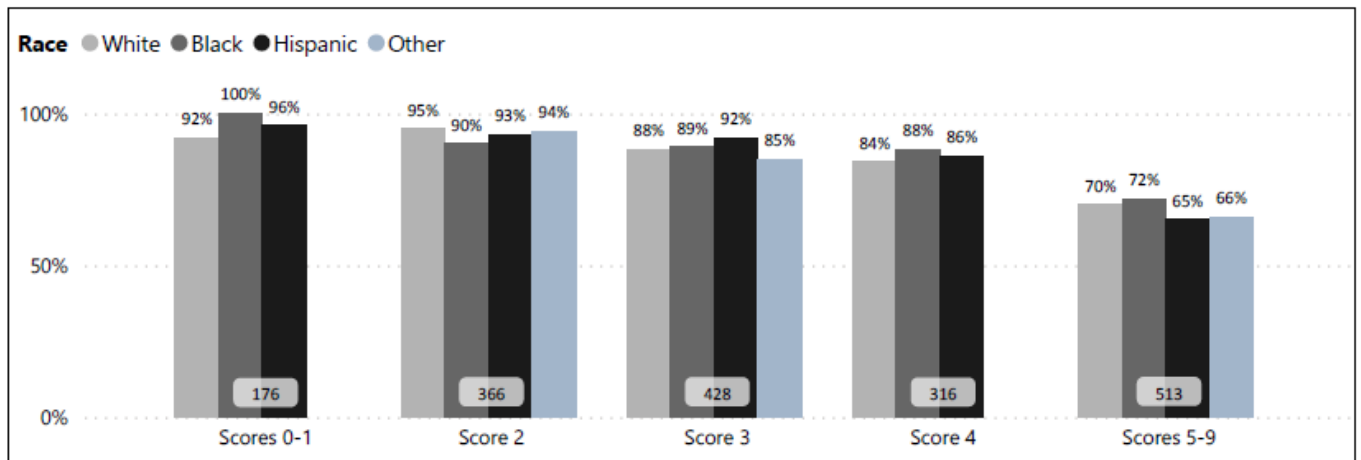


**VPRAI FIGURE 42.** No New Arrest Rate, by Risk Level and Offense Type



Note: This figure satisfies the reporting mandate under Penal Code section 1320.35(f)(3)(C).

**VPRAI FIGURE 43.** No New Arrest Rate, by Risk Level and Race/Ethnicity

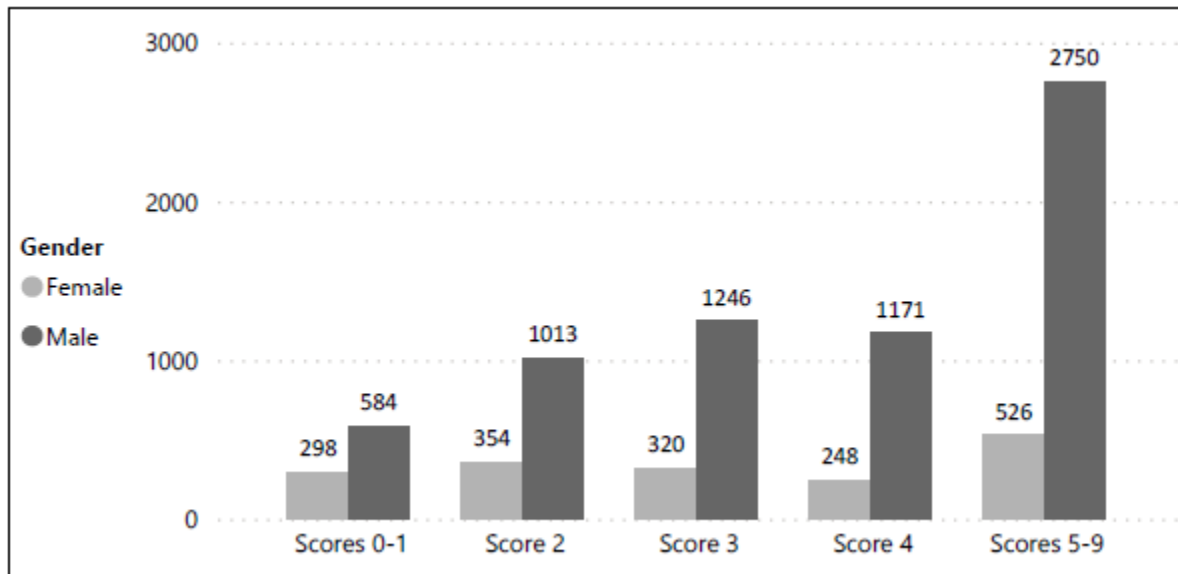


Notes: This figure satisfies the reporting mandate under Penal Code section 1320.35(f)(3)(C). Where court appearance rates for the “Other” category are not shown, sample size was too small to calculate a rate.

## VPRAI RISK SCORE DISTRIBUTIONS

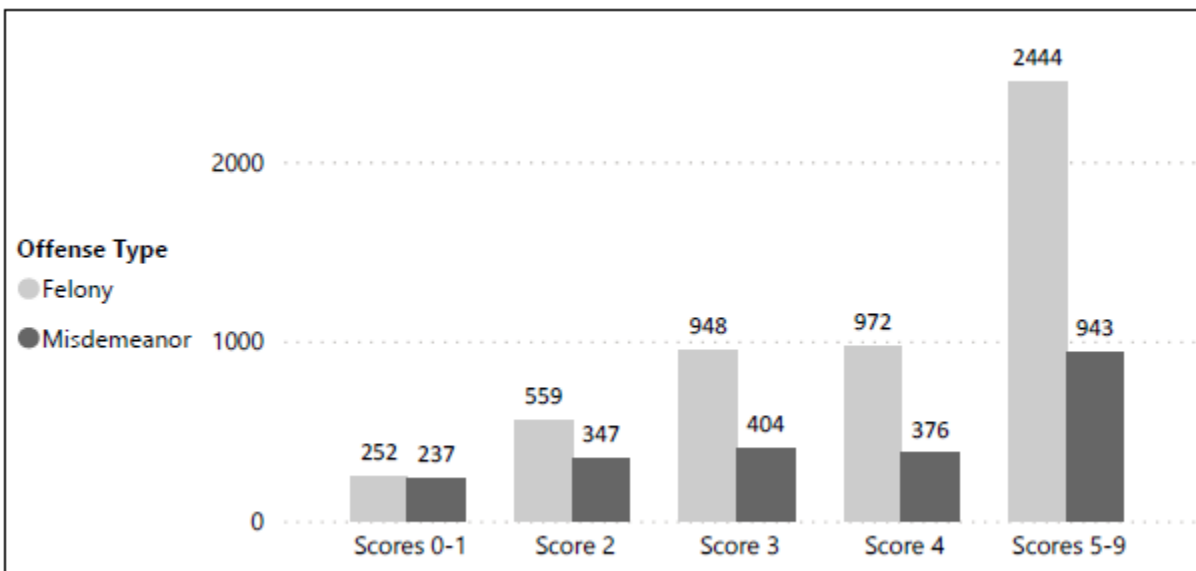
### VPRAI Risk Score Distributions by Gender, Offense Type, Race/Ethnicity, and Release Decision

VPRAI FIGURE 44. Risk Level, by Gender



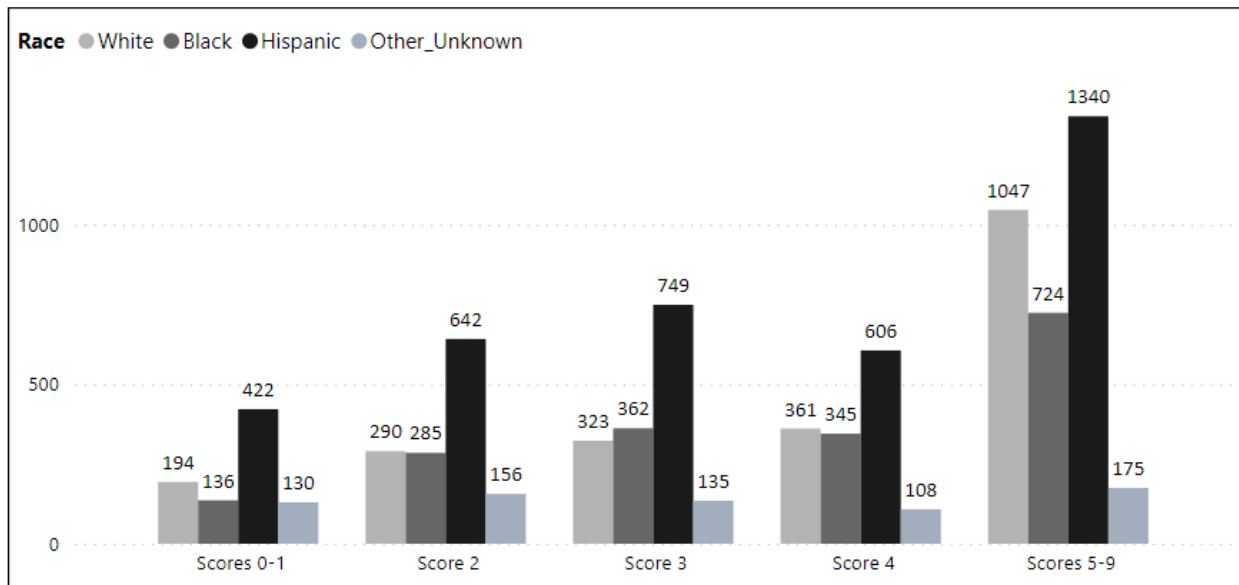
Note: This figure satisfies the reporting mandate under Penal Code section 1320.35(f)(3)(B).

VPRAI FIGURE 45. Risk Level, by Offense Type



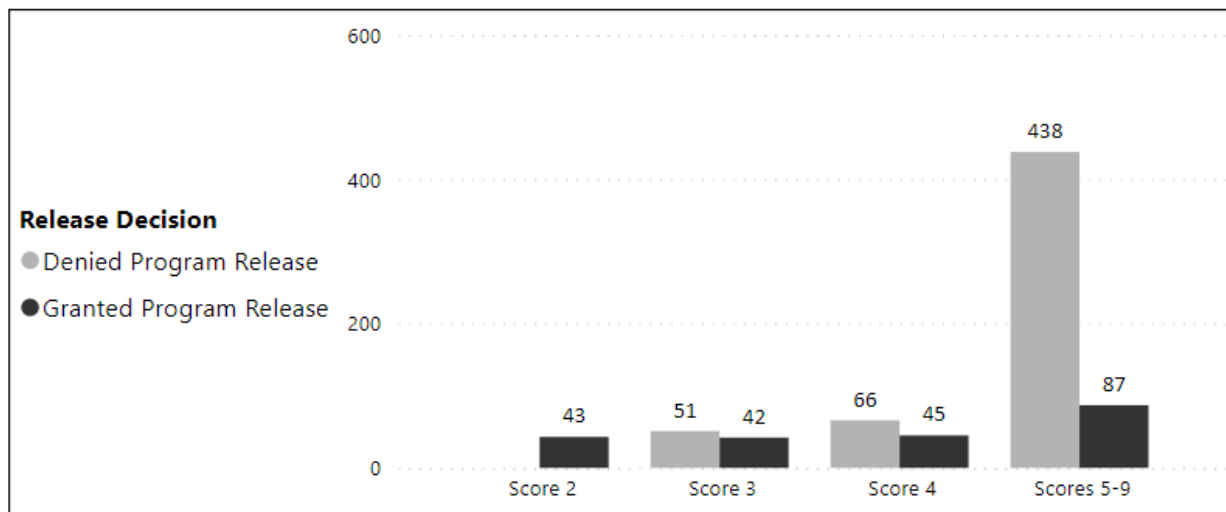
Note: This figure satisfies the reporting mandate under Penal Code section 1320.35(f)(3)(B).

**VPRAI FIGURE 46.** Risk Level, by Race/Ethnicity



Note: This figure satisfies the reporting mandate under Penal Code section 1320.35(f)(3)(B).

**VPRAI FIGURE 47.** Risk Level, by Release Decision



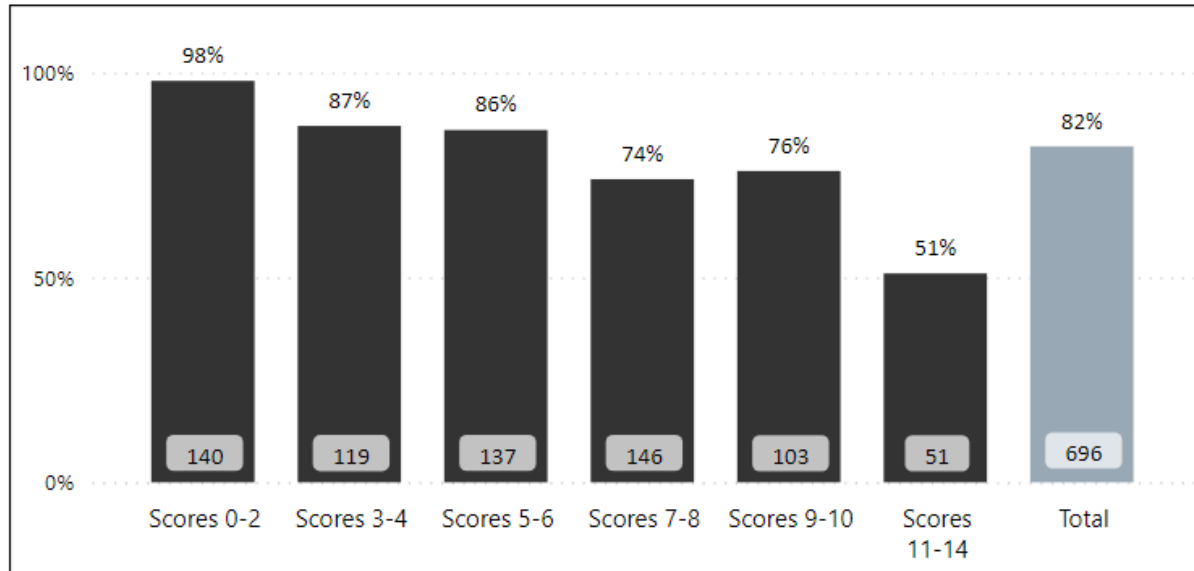
Notes: This figure satisfies the reporting mandate under Penal Code section 1320.35(f)(3)(B). “Granted Program Release” includes individuals released on their Own Recognizance or pretrial monitoring. “Denied Program Release” indicates individuals who were denied pretrial release by a judicial officer; however, these individuals may have been released on bail. Small sample sizes prevent the complete reporting of rates for the “Denied Program Release” category.

## VPRAI-R RISK ASSESSMENT TOOL INFORMATION

### VPRAI-R OUTCOMES

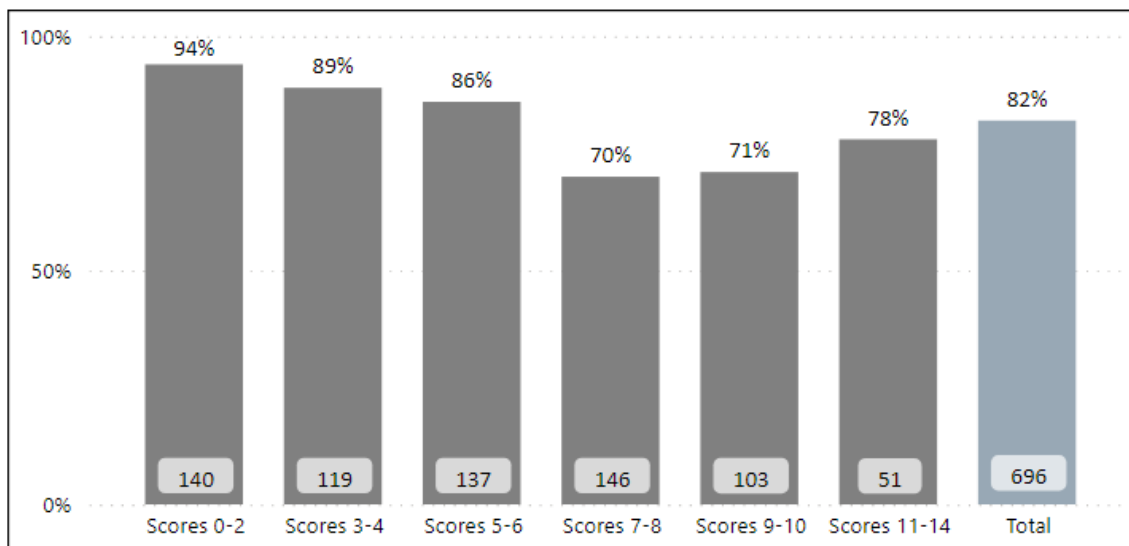
#### Overall VPRAI-R Outcomes by Risk Score

**VPRAI-R FIGURE 48.** Court Appearance Rate, by Risk Level



Note: This figure satisfies the reporting mandate under Penal Code section 1320.35(f)(3)(A).

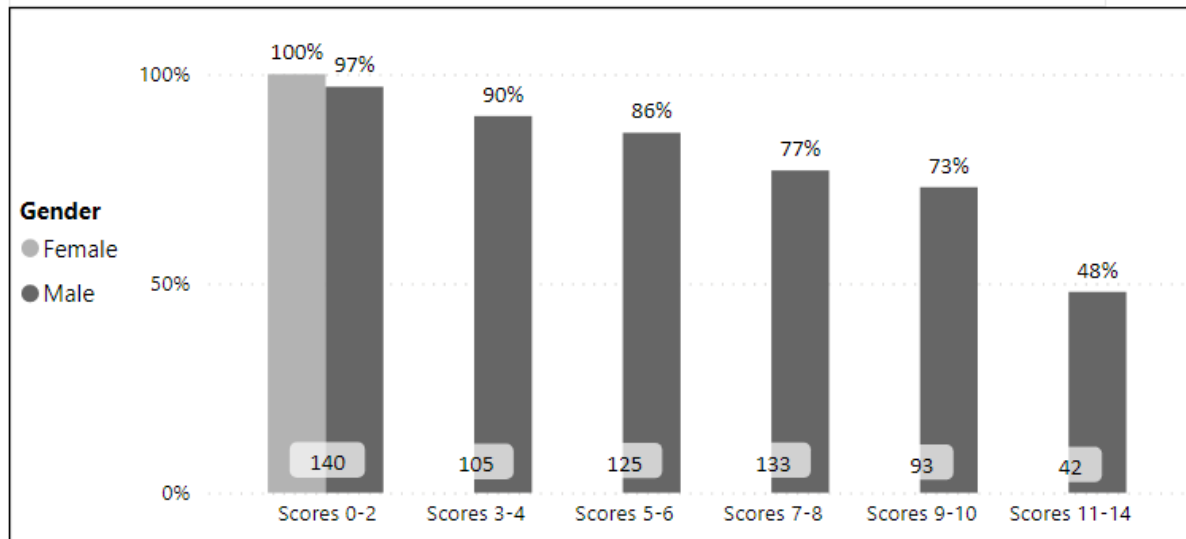
**VPRAI-R FIGURE 49.** No New Arrest Rate, by Risk Level



Note: This figure satisfies the reporting mandate under Penal Code section 1320.35(f)(3)(A).

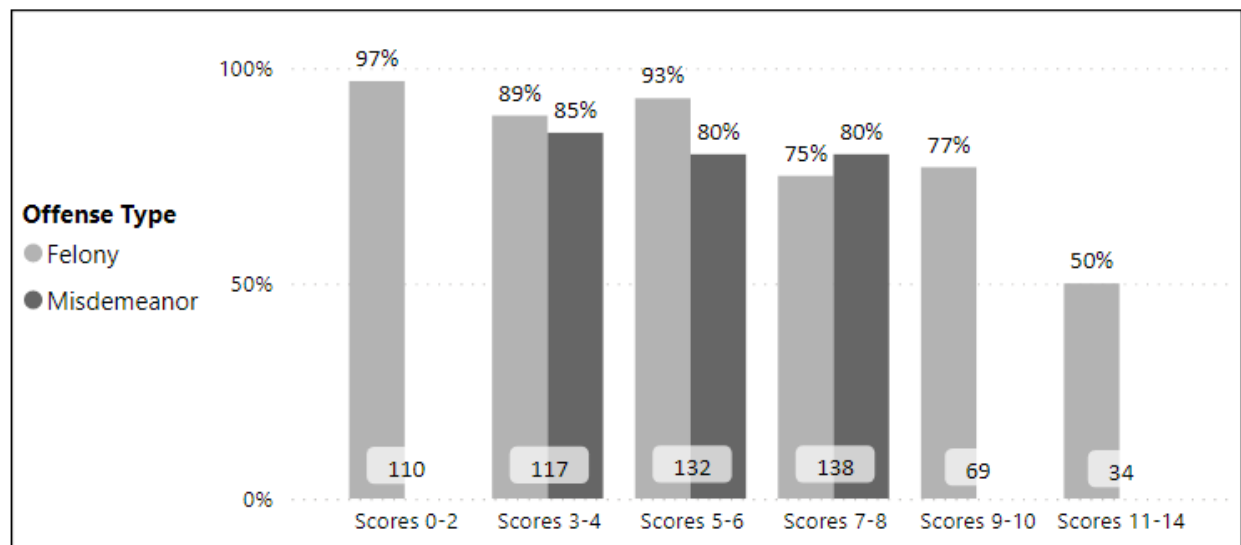
## VPRAI-R Court Appearance Rates, by Gender, Offense Type, and Race/Ethnicity

**VPRAI-R FIGURE 50.** Court Appearance Rate, by Risk Level and Gender



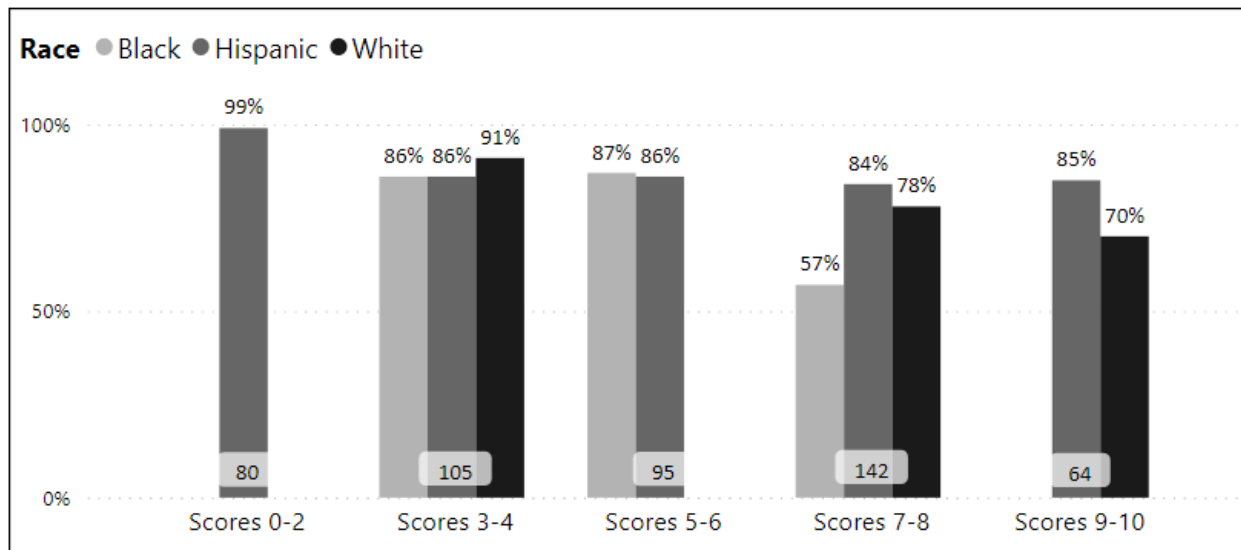
Notes: This figure satisfies the reporting mandate under Penal Code section 1320.35(f)(3)(C). Small sample sizes prevent the complete reporting of rates for the “Female” category.

**VPRAI-R FIGURE 51.** Court Appearance Rate, by Risk Level and Offense Type



Notes: This figure satisfies the reporting mandate under Penal Code section 1320.35(f)(3)(C). Small sample sizes prevent the complete reporting of rates for the “Misdemeanor” category.

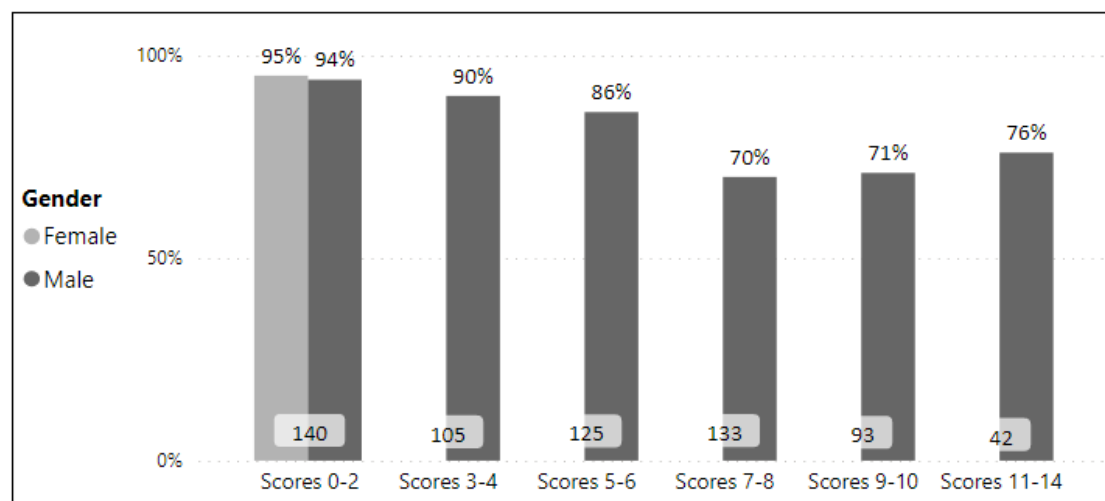
**VPRAI-R FIGURE 52.** Court Appearance Rate, by Risk Level and Race/Ethnicity



Notes: This figure satisfies the reporting mandate under Penal Code section 1320.35(f)(3)(C). Small sample sizes prevent the complete reporting of rates for the “Black” and “White” categories.

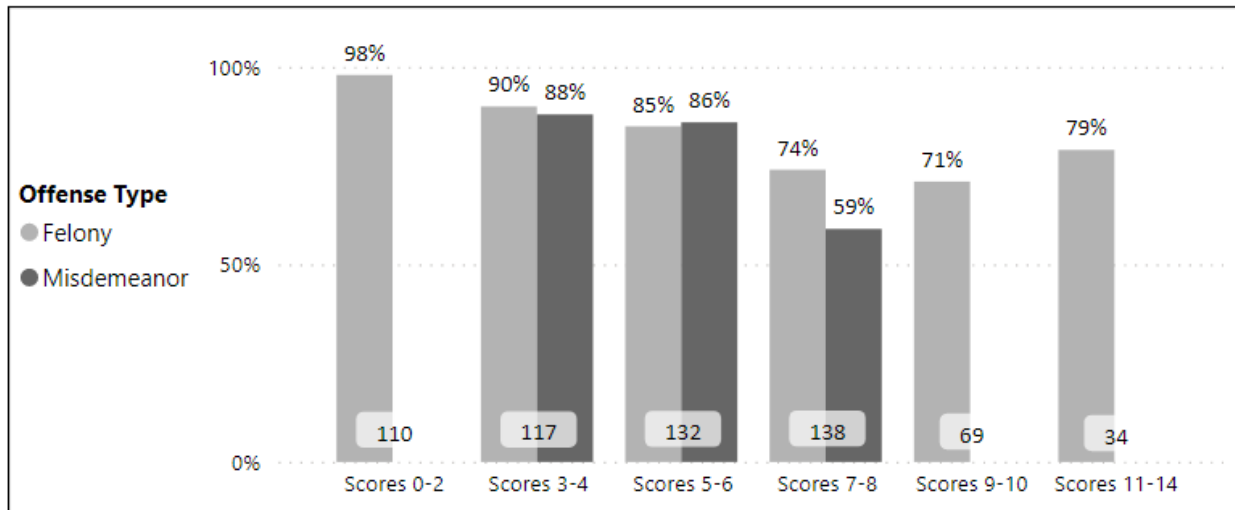
## VPRAI-R No New Arrest Rates, by Gender, Offense Type, and Race/Ethnicity

**VPRAI-R FIGURE 53.** No New Arrest Rate, by Risk Level and Gender



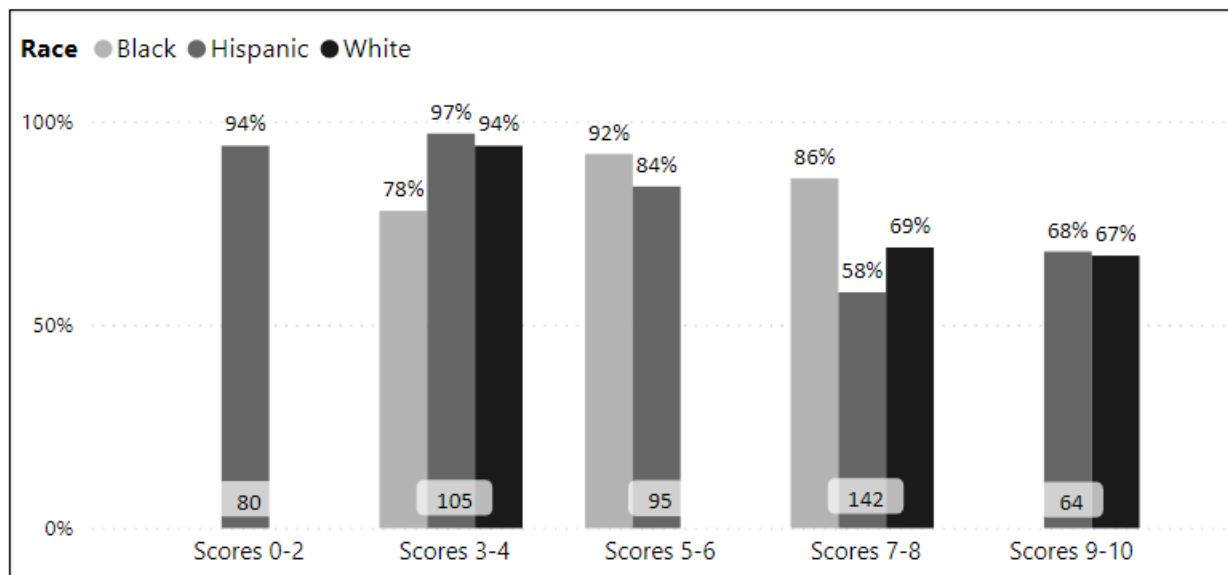
Notes: This figure satisfies the reporting mandate under Penal Code section 1320.35(f)(3)(C). Small sample sizes prevent the complete reporting of rates for the “Female” category.

**VPRAI-R FIGURE 54.** No New Arrest Rate, by Risk Level and Offense Type



Notes: This figure satisfies the reporting mandate under Penal Code section 1320.35(f)(3)(C). Small sample sizes prevent the complete reporting of rates for the "Misdemeanor" category.

**VPRAI-R FIGURE 55.** No New Arrest Rate, by Risk Level and Race/Ethnicity

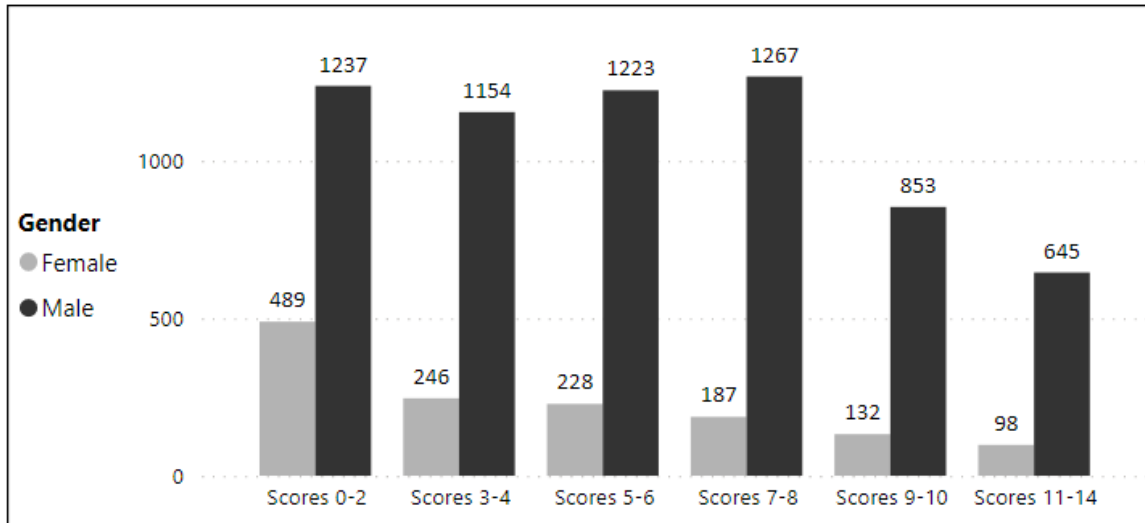


Notes: This figure satisfies the reporting mandate under Penal Code section 1320.35(f)(3)(C). Small sample sizes prevent the complete reporting of rates for the "Black" and "White" categories.

## VPRAI-R RISK SCORE DISTRIBUTIONS

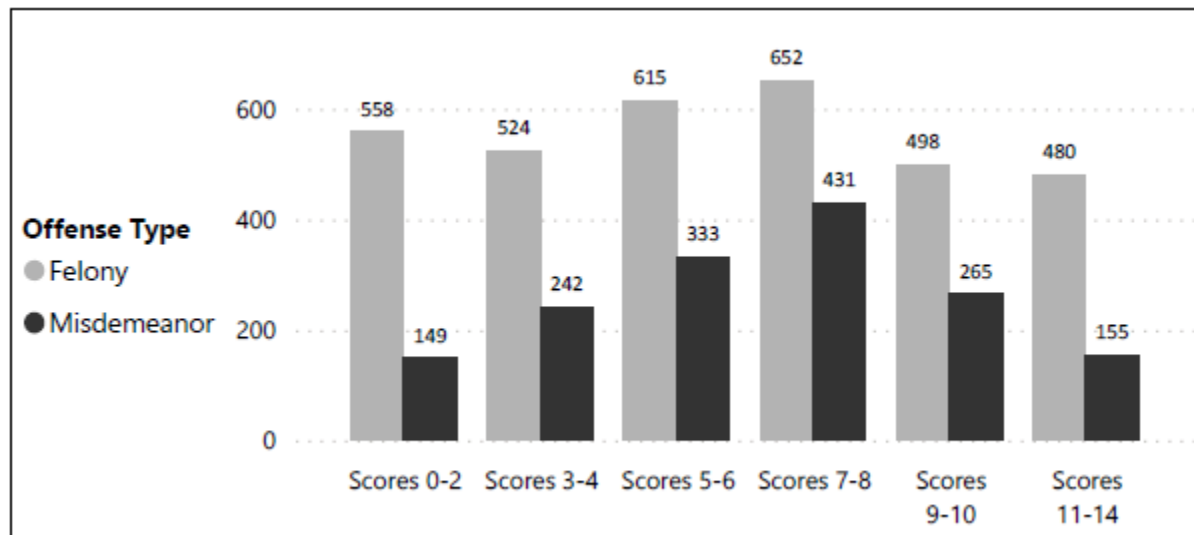
### VPRAI-R Risk Score Distributions by Gender, Offense Type, Race/Ethnicity, and Release Decision

VPRAI-R FIGURE 56. Risk Level, by Gender



Note: This figure satisfies the reporting mandate under Penal Code section 1320.35(f)(3)(B).

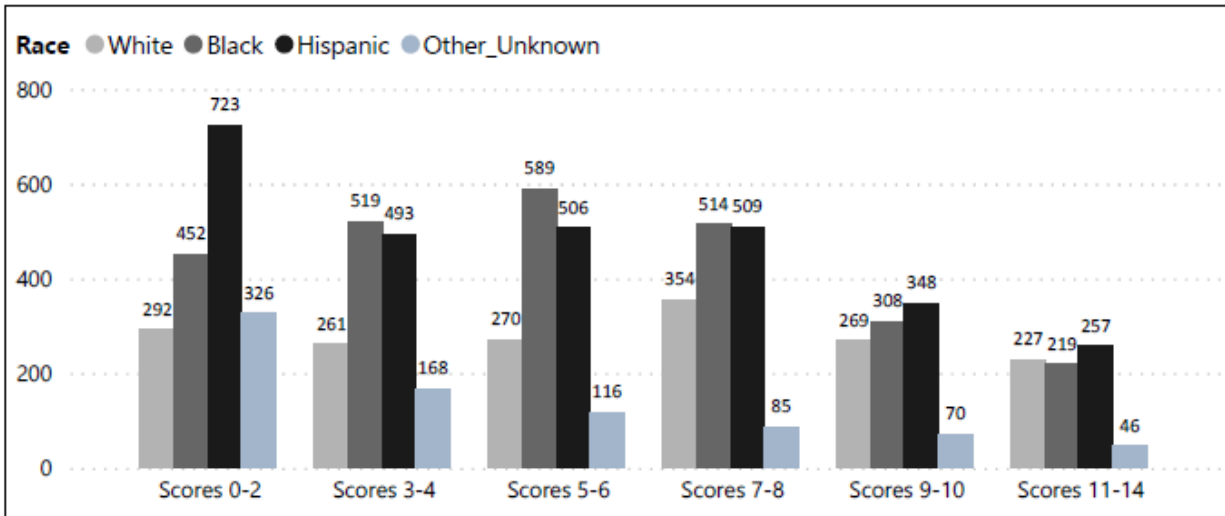
VPRAI-R FIGURE 57. Risk Level, by Offense Type



Note: This figure satisfies the reporting mandate under Penal Code section 1320.35(f)(3)(B).

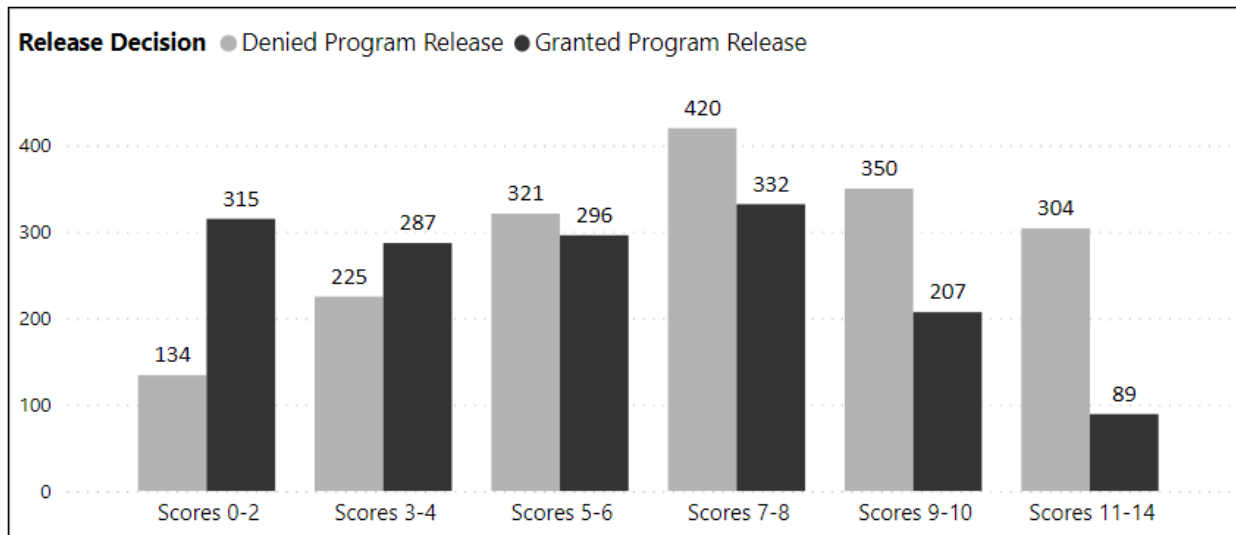


**VPRAI-R FIGURE 58.** Risk Level, by Race/Ethnicity



Note: This figure satisfies the reporting mandate under Penal Code section 1320.35(f)(3)(B).

**VPRAI-R FIGURE 59.** Risk Level, by Release Decision



Note: This figure satisfies the reporting mandate under Penal Code section 1320.35(f)(3)(B).

## VPRAI-O RISK ASSESSMENT TOOL INFORMATION

### VPRAI-O OUTCOMES

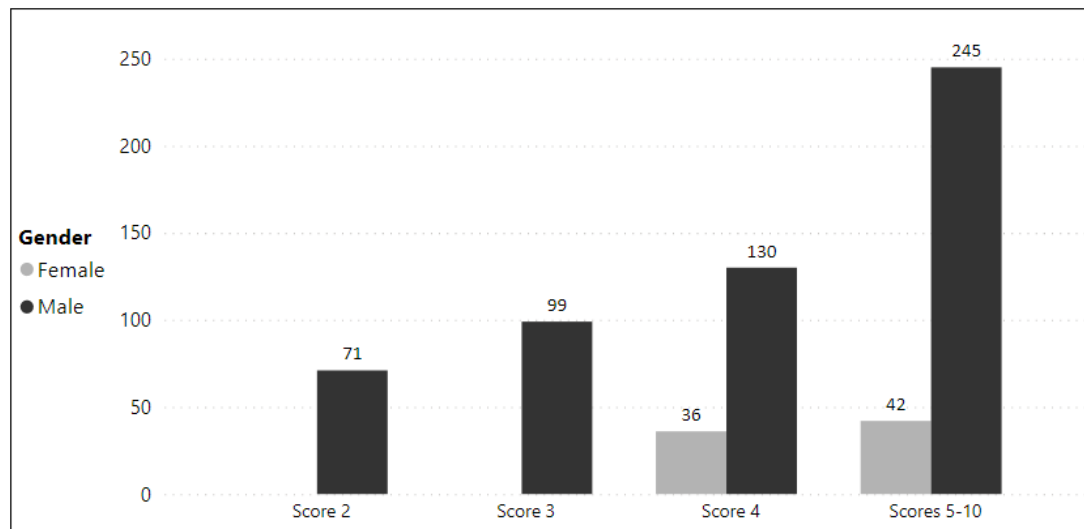
Figures that contain outcomes measures for the VPRAI-O<sup>12</sup> were not produced due to a small sample size in the evaluation data set (N=14).

### VPRAI-O RISK SCORE DISTRIBUTIONS

#### VPRAI Risk Score Distributions by Gender, Offense Type, Race/Ethnicity, and Release Decision

Figures that contain distributions for the VPRAI-O<sup>13</sup> for gender, offense type, and race/ethnicity contain data for population subgroups with 30 or more individuals.

**VPRAI-O FIGURE 60.** Risk Level, by Gender

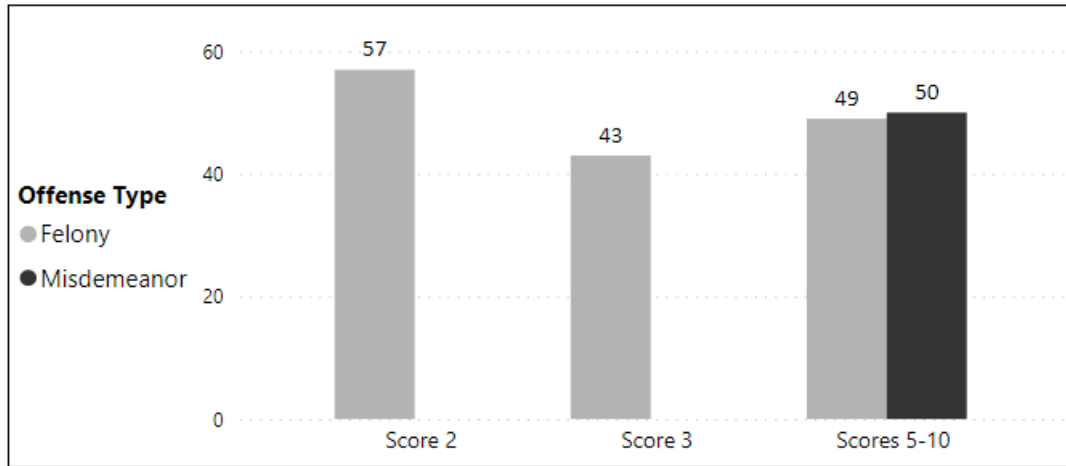


Notes: This figure satisfies the reporting mandate under Penal Code section 1320.35(f)(3)(B). Small sample sizes prevent the complete reporting of rates for the “Female” category.

<sup>12</sup> Figures corresponding to the following SB 36 mandates are not presented due to small sample sizes: SB 36 Section 3A: Court Appearance; SB 36 Section 3A: No New Arrest Rate; SB 36 Section 3C: Court Appearance Rate, by Risk Level and Gender; SB 36 Section 3C: Court Appearance Rate, by Risk Level and Race/Ethnicity; 3C: Court Appearance Rate, by Risk Level and Offense Type; 3C: No New Arrest Rate, by Risk Level and Gender; 3C: No New Arrest Rate, by Risk Level and Race/Ethnicity; and 3C: No New Arrest Rate, by Risk Level and Offense Type.

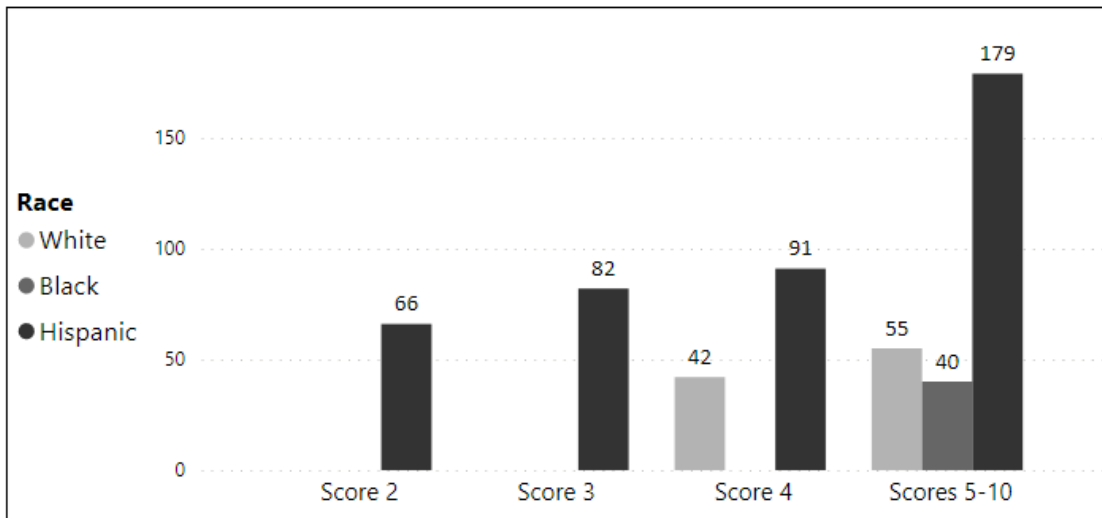
<sup>13</sup> Figures corresponding to the following SB 36 mandates are not presented due to small sample sizes: SB 36 Section 3A: Court Appearance; SB 36 Section 3A: No New Arrest Rate; SB 36 Section 3C: Court Appearance Rate, by Risk Level and Gender; SB 36 Section 3C: Court Appearance Rate, by Risk Level and Race/Ethnicity; 3C: Court Appearance Rate, by Risk Level and Offense Type; 3C: No New Arrest Rate, by Risk Level and Gender; 3C: No New Arrest Rate, by Risk Level and Race/Ethnicity; and 3C: No New Arrest Rate, by Risk Level and Offense Type.

**VPRAI-O FIGURE 61. Risk Level, by Offense Type**



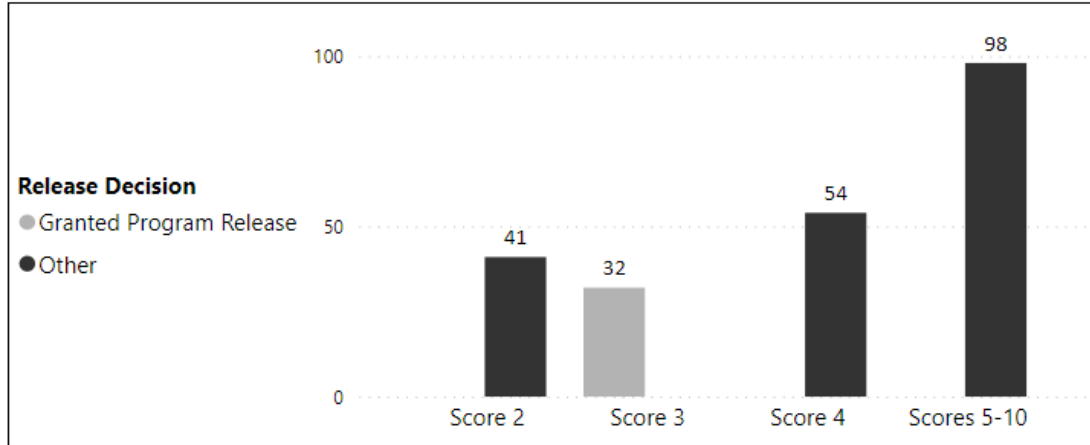
Notes: This figure satisfies the reporting mandate under Penal Code section 1320.35(f)(3)(B). Small sample sizes prevent the complete reporting of rates for the "Misdemeanor" category.

**VPRAI-O FIGURE 62. Risk Level, by Race/Ethnicity**



Notes: This figure satisfies the reporting mandate under Penal Code section 1320.35(f)(3)(B). Small sample sizes prevent the complete reporting of rates for the "White" and "Black" categories.

**VPRAI-O FIGURE 63.** Risk Level, by Release Decision



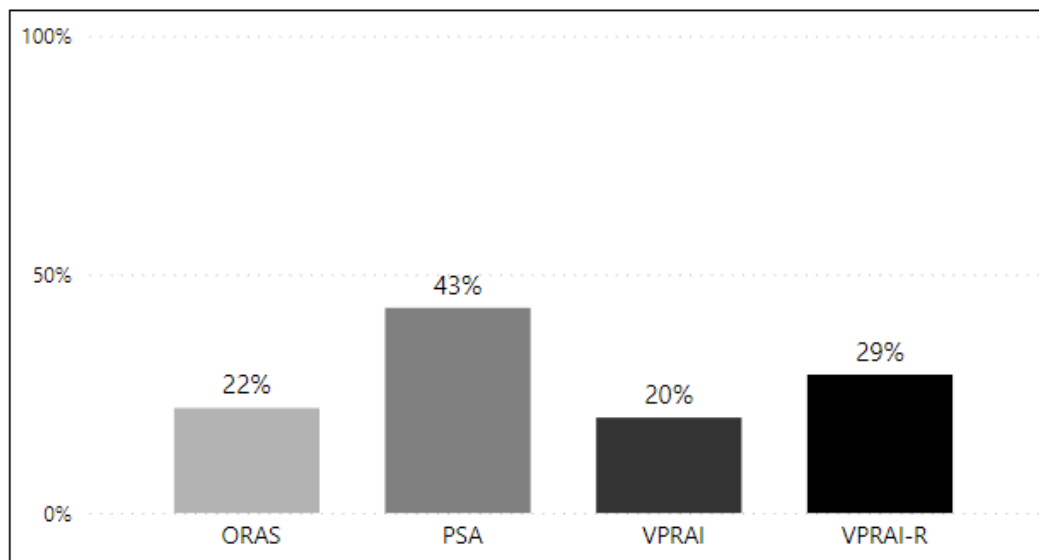
Notes: This figure satisfies the reporting mandate under Penal Code section 1320.35(f)(3)(B). Small sample sizes prevent the complete reporting of rates for the "Female" category.

## JUDICIAL OVERRIDES

Release recommendations are specific recommendations for release or conditions of release made by probation based on their use of risk tools. Not all probation departments provide release recommendations, as it is not a required part of the program, some probation departments pass on risk tool information without recommendations about release. Probation recommendations of "OR" or "Monitor" were coded as a recommended release. Similarly, a judicial decision of "OR" or "Monitor" was coded as a decision to release.

The figures below show data only from programs in which probation generates pretrial release recommendations (Alameda ,Calaveras , Modoc , Napa , Nevada , Sacramento , San Mateo , Santa Barbara , Tuolumne, Ventura, Yuba). Overall, the data contain 8,667 assessments. Judicial officers may override the recommendation made by probation. Figure 64 shows that judicial overrides range from a low of 20 percent for the VPRAI to a high of 43 percent for the PSA

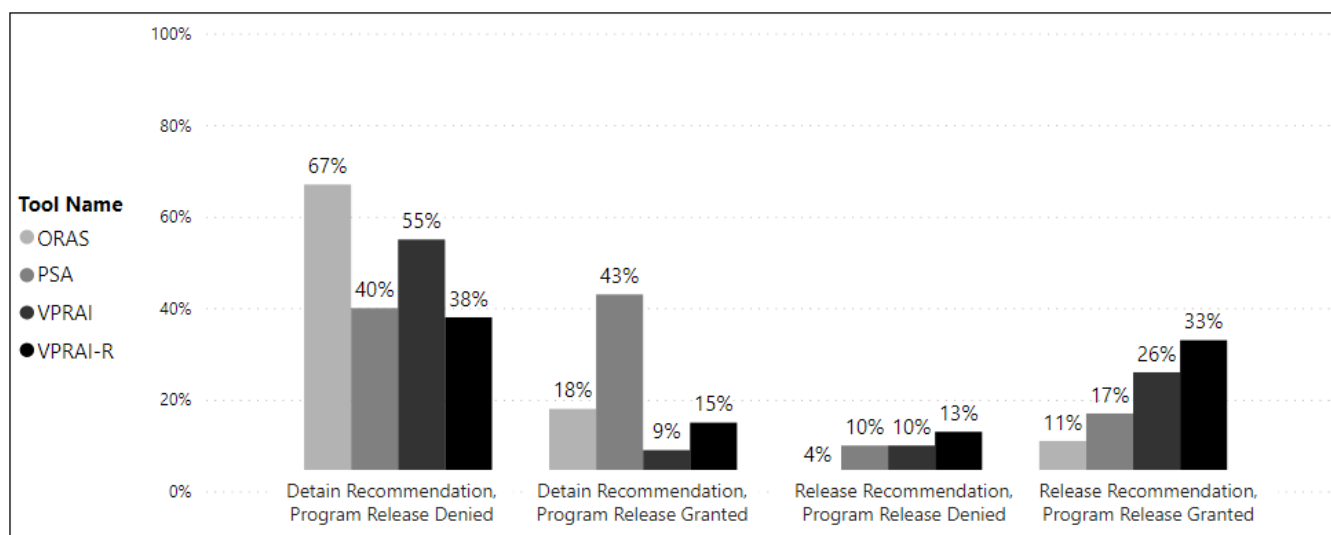
**FIGURE 64.** Percentage of Judicial Overrides of Probation Recommendations, by Tool



Note: This figure satisfies the reporting mandate under Penal Code section 1320.35(f)(3)(D).

Figure 65 characterizes the correspondence between the probation recommendation and the judicial decision. The first and last set of bars in Figure 65 show assessments for which the probation recommendation was approved by the judicial officer. The second set of bars shows assessments for which probation recommended detention (denying program release, individuals may still obtain bail release) and the judicial officer denied the recommendation and chose to grant program release. The third set of bars shows assessments for which probation recommended program release and the judicial officer denied the recommendation, choosing to deny program release. Note that although PSA had the highest level of judicial overrides (Figure 64), many of the overrides were for assessments for which probation recommended detention (denying program release, individuals may still obtain bail release) and the judicial officers overrode the recommendation and chose to grant program release (Figure 65).

**FIGURE 65.** Type of Judicial Overrides of Probation Recommendations, by Tool



Note: This figure satisfies the reporting mandate under Penal Code section 1320.35(f)(3)(D).

## RISK ASSESSMENT TOOLS AND RELEASE CONDITIONS FRAMEWORKS

### Risk Assessment Tools

**TABLE 17.** Summary of Pretrial Pilot Program Risk Assessment Tools

County	Pretrial Risk Assessment Tool	Conduct Interview	Release Conditions Framework
Alameda	VPRAI-R	Yes	Yes
Calaveras	PSA	No	Yes
Kings	VPRAI-O	Yes	Yes
Los Angeles	PSA + CCAT	Yes - CCAT	No
Modoc	ORAS-PAT	Yes	No
Napa	ORAS-PAT	Yes	Yes
Nevada-Sierra	ORAS-PAT	Yes	Yes
Sacramento	PSA	No	Yes
San Joaquin	VPRAI	Yes	Yes
San Mateo	VPRAI-R	Yes	Yes
Santa Barbara	VPRAI	Yes	Yes
Sonoma	PSA	*No	Yes
Tulare	PSA	No	Yes
Tuolumne	PSA	No	Yes
Ventura	ORAS-PAT	Yes	Yes
Yuba	ORAS-PAT	Yes	Yes

Notes: This table satisfies the reporting mandate under Penal Code sections 1320.35(f)(1)(A) and 1320.35(f)(1)(C). While the PSA is possible to complete without an interview, Sonoma reports that they conduct interviews with almost all individuals assessed in Sonoma County. In Los Angeles, the CCAT tool is used at a later stage of the pretrial process and is being piloted on a smaller sample of cases than the PSA; as such it requires an additional layer of data processing and analysis. This report does not include any data on CCAT assessments or any associated release decisions or supervision conditions.

## Release Conditions Framework

### Release Conditions Framework, by Pilot Site

The following exhibits satisfy the reporting mandate under Penal Code sections 1320.35(f)(1)(B).

#### EXHIBIT 1. Alameda—VPRAI-R

**TABLE 3. PRETRIAL PRAXIS (MANUAL VERSION)**

Risk Level	Recommendation	VPRAI: Charge Category				
		Non-Violent Misd.	Driving Under the Influence	Non-Violent Felony	Violent Misd.	Violent Felony or Firearm
Level 1	Bail Status	Release	Release	Release	Release	Release
	Pretrial Supervision	No	No	No	No	Level II
	Special Conditions	No	No	No	No	As Needed
Level 2	Bail Status	Release	Release	Release	Release	Release
	Pretrial Supervision	No	Monitor	Monitor	Monitor	Level III
	Special Conditions	No	No	No	No	As Needed
Level 3	Bail Status	Release	Release	Release	Release	Detain
	Pretrial Supervision	Monitor	Monitor	Level I	Level I	No
	Special Conditions	No	No	No	As Needed	N/A
Level 4	Bail Status	Release	Release	Release	Release	Detain
	Pretrial Supervision	Level I	Level I	Level II	Level II	No
	Special Conditions	No	As Needed	As Needed	As Needed	N/A
Level 5	Bail Status	Release	Release	Release	Detain	Detain
	Pretrial Supervision	Level II	Level II	Level III	No	No
	Special Conditions	As Needed	As Needed	As Needed	N/A	N/A
Level 6	Bail Status	Detain	Detain	Detain	Detain	Detain
	Pretrial Supervision	No	No	No	No	No
	Special Conditions	N/A	N/A	N/A	N/A	N/A



## EXHIBIT 2. Calaveras—PSA

FTA Score	New Criminal Activity Score					
	1	2	3	4	5	6
1	1	1				
2	1	2	2	3	4	
3		2	3	3	4	5
4		3	3	4	4	5
5		4	4	4	5	5
6				5	5	5

1	Own Recognizance
2	Own Recognizance with Conditions
3	Supervised Own Recognizance
4	Intensive Supervised Own Recognizance
5	Ineligible for Prearrest Release

New Violent Criminal Activity Flag	
Yes	Ineligible for Prearrest Release
No	Eligible for Prearrest Release

## EXHIBIT 3. Kings—VPRAI-O

VPRAI Score	Risk Rate	Court Report	Release Decision	Pretrial Monitoring Level
0	Low	Yes	Release on Pretrial Services	* <b>Reminder Only</b> - Court reminder calls
1	Low	Yes	Release on Pretrial Services	* <b>Basic Pretrial Monitoring</b> - Court reminder calls - Defendant reports by telephone weekly with Pretrial Services
2	Below Average	Yes	Release on Pretrial Services	* <b>Enhanced Pretrial Monitoring</b> - Court reminder calls - Defendant reports in person weekly to Pretrial Services - Case management services
3	Average	Yes	Detain Pending Arraignment, recommend release on Pretrial monitoring.	* <b>Intensive Pretrial Monitoring</b> - Court reminder calls - Defendant reports in person weekly to Pretrial Services - Case management services - Field visit(s) by DPO, at least one time per month - Random drug testing, if Court ordered - Placement on GPS
4	High	Yes	Court Decision Detain/Release	* <b>Intensive Pretrial Monitoring</b>
5	High	Yes	Court Decision Detain/Release	* <b>Intensive Pretrial Monitoring</b>
6	High	Yes	Court Decision Detain/Release	* <b>Intensive Pretrial Monitoring</b>
7	High	Yes	Court Decision Detain/Release	* <b>Intensive Pretrial Monitoring</b>
8	High	Yes	Court Decision Detain/Release	* <b>Intensive Pretrial Monitoring</b>
9	High	Yes	Court Decision Detain/Release	* <b>Intensive Pretrial Monitoring</b>

Los Angeles—PSA: Los Angeles does not use a release conditions framework.

Modoc—ORAS: Modoc does not use a release conditions framework.

**EXHIBIT 4.** Napa—ORAS (the ORAS toolmaker classifies scores of 0 to 2 as Low, 3 to 5 as Medium, and 6 to 9 as High)

Most Serious Charge						
Pretrial Risk Category	Less Serious Misdemeanor	More Serious Misdemeanor	Less Serious or Non-Violent Felony	Driving Under the Influence	Domestic Violence	Serious or Violent Felony
Low	No active monitoring needed. Court reminder only.	Release with Basic Monitoring	Release with Basic Monitoring	Release with Enhanced Monitoring	Release with Enhanced Monitoring	Detained, or release with intensive supervision
Medium	Release with Basic Monitoring	Release with Basic Monitoring	Release with Basic Monitoring	Release with Enhanced Monitoring	Release with Enhanced Monitoring	Detained, or release with intensive supervision
High	Release with Basic Monitoring	Release with Enhanced Monitoring	Release with Enhanced Monitoring	Detained, or release with intensive supervision	Detained, or release with intensive supervision	Detained, or release with intensive supervision

**EXHIBIT 5.** Nevada-Sierra—ORAS

Release Activities and Conditions	ORAS PAT SCORE		
	Low	Mod	High
Mandatory Statutory Conditions	X	X	X
Court Reminders	X	X	X
Monthly Criminal History Checks		X	X
Monthly CE Check-in	X		
Monthly Office Visits		X	
Bi-Weekly Office Visits			X
Other Case Specific Conditions		X	X

**EXHIBIT 6. Sacramento—PSA**

Failure to Appear (FTA) Score	New Criminal Activity (NCA) Score						
		1	2	3	4	5	6
	1	1	2				
	2	2	2	3	4	5	
	3		3	3	4	5	6
	4		4	4	4	5	6
	5		5	5	5	5	6
	6					6	6

**EXHIBIT 7. San Joaquin—VPRAI**

VPRAI Score	Risk Rate	Court Report	Release Decision	Pretrial Monitoring Level
0	Low	No	Release on OR	<ul style="list-style-type: none"> <li>Reminder Only <ul style="list-style-type: none"> <li>Court reminder calls</li> </ul> </li> </ul>
1	Low	No	Release on OR	<ul style="list-style-type: none"> <li>Basic Pretrial Monitoring <ul style="list-style-type: none"> <li>Court reminder calls</li> <li>Defendant reports by telephone weekly with Pretrial Services</li> </ul> </li> </ul>
2	Below Average	No	Release on OR	<ul style="list-style-type: none"> <li>Enhanced Pretrial Monitoring <ul style="list-style-type: none"> <li>Court reminder calls</li> <li>Defendant reports in person weekly to Pretrial Services</li> <li>Case management services</li> </ul> </li> </ul>
3	Average	Yes	Detain pending arraignment, recommend release on pretrial monitoring	<ul style="list-style-type: none"> <li>Intensive Pretrial Monitoring <ul style="list-style-type: none"> <li>Court reminder calls</li> <li>Defendant reports in person weekly to Pretrial Services</li> <li>Case management services</li> <li>Field visit(s) by PO, at least once a month</li> <li>Random drug testing if court ordered</li> <li>Placement on GPS</li> </ul> </li> </ul>
4	Above Average	Yes	Detain	<ul style="list-style-type: none"> <li>None</li> </ul>
5	High	Yes	Detain	<ul style="list-style-type: none"> <li>None</li> </ul>
6	High	Yes	Detain	<ul style="list-style-type: none"> <li>None</li> </ul>
7	High	Yes	Detain	<ul style="list-style-type: none"> <li>None</li> </ul>
8	High	Yes	Detain	<ul style="list-style-type: none"> <li>None</li> </ul>
9	High	Yes	Detain	<ul style="list-style-type: none"> <li>None</li> </ul>

## EXHIBIT 8. San Mateo—VPRAI-R

Assessment Level	Non-Violent Misd	DUI	Non-Violent Felony	Violent Misd	Violent Felony
Level 1 (Score 0-2)	Release Own Recognizance	Release Own Recognizance	Release Own Recognizance	Release Own Recognizance	Release Enhanced Monitoring
Level 2 (Score 3-4)	Release OR	Release Basic Monitoring	Release Basic Monitoring	Release Basic Monitoring	Release Enhanced Monitoring
Level 3 (Score 5-6)	Release Basic Monitoring	Release Regular Monitoring	Release Regular Monitoring	Release Regular Monitoring	Detain
Level 4 (Score 7-8)	Release Regular Monitoring	Release Regular Monitoring	Release Regular Monitoring	Release Enhanced Monitoring	Detain
Level 5 (Score 9-10)	Release Regular Monitoring	Release Enhanced Monitoring	Release Enhanced Monitoring	Detain	Detain
Level 6 (Score 11-14)	Detain	Detain	Detain	Detain	Detain

- **Basic Monitoring-** court reminder calls, weekly telephone reporting
- **Regular Monitoring-** court reminder calls, in-person weekly reporting
- **Enhanced Monitoring-** court reminder calls, in-person weekly reporting, random drug and/or alcohol testing (if court-ordered), GPS and/or Continuous Alcohol Monitoring (CAM) (if court-ordered)

## EXHIBIT 9. Santa Barbara—VPRAI

### Guidelines for Levels of Monitoring if Released on Pretrial Supervision

VPRAI SCORE	Level 1 0-2	Level 2 3-4	Level 3 5-6	Level 4 7-8	Level 5 9-10	Level 6 11-14
Court Reminders	X	X	X	X	X	X
Phone In*	1x/week	2x/week	2x/week	2x/week	2x/week	2x/week
Office Visits	N/A	1x/month	1x/month	2x/month	2x month	weekly
Field Visits**	N/A	N/A	1x/month	1x/month	2x/month	2x/month
Court - ordered Drug Testing	Frequency as court ordered or random	Frequency as court ordered or random	Frequency as court ordered or random	Frequency as court ordered or random	Frequency as court ordered or random	Frequency as court ordered or random

\*All DV, Firearms, Sex, DUI w/Priors or Injury, Large Quantity Narcotic Sales, and Serious/Violent Offenses per Penal Code sections 667.5(c) and 1192.7(c) will be supervised at Level 5 if risk score is between 0-6, and at Level 6 if risk score is between 7-14.

\*\*Phone-Ins should occur on days clients do not have scheduled office visits

\*\*\*Field visits should occur on days clients do not have scheduled office visits

## EXHIBIT 10. Sonoma—PSA

### Sonoma County Pretrial Release Conditions Matrix

(using borrowed success rates from national data)

Failure to Appear (FTA) Scaled Score	New Criminal Activity (NCA) Scaled Score					
	1 91% Likely Arrest-Free	2 85% Likely Arrest-Free	3 78% Likely Arrest-Free	4 68% Likely Arrest-Free	5 55% Likely Arrest-Free	6 47% Likely Arrest-Free
1 89% Likely to Appear	Level 1	Level 1				
2 85% Likely to Appear	Level 1	Level 1	Level 1	Level 2	Level 3	
3 81% Likely to Appear		Level 1	Level 1	Level 2	Level 3	Level 3*
4 73% Likely to Appear		Level 2	Level 2	Level 2	Level 3	Level 3*
5 69% Likely to Appear		Level 2	Level 2	Level 2	Level 3	Level 3*
6 65% Likely to Appear				Level 2	Level 3	Level 3*

\*NOTE: Pre-arraignment release is not recommended per local guidance for arrestees with a NCA score of 6.

## EXHIBIT 11. Tulare—PSA

### Public Safety Assessment (PSA) and Decision Making Framework (DMF)

Tulare County, CA

	NCA 1	NCA 2	NCA 3	NCA 4	NCA 5	NCA 6
FTA 1	OR	OR				
FTA 2	OR	OR	PML 1- Low	PML 2 - Medium	PML 3 - High	
FTA 3		PML 1- Low	PML 1- Low	PML 2 - Medium	PML 3 - High	Detain
FTA 4		PML 1- Low	PML 1- Low	PML 2 - Medium	PML 3 - High	Detain
FTA 5		PML 2 - Medium	PML 2 - Medium	PML 3 - High	Detain	Detain
FTA 6				Detain	Detain	Detain



New Violent Criminal Activity (NVCA) Flag

= If YES, will be considered when making Release/Detention orders and imposing conditions of release

## EXHIBIT 12. Tuolumne—PSA

	New Criminal Activity (NCA) Scaled Score					
Failure to Appear (FTA) Scaled Score	1 91% Likely Arrest Free	2 85% Likely Arrest Free	3 78% Likely Arrest Free	4 68% Likely Arrest Free	5 55% Likely Arrest Free	6 47% Likely Arrest Free
1 89% Likely to Appear	Release Level 1	Release Level 1				
2 85% Likely to Appear	Release Level 1	Release Level 1	Release Level 2	Release Level 2	Release Level 3	
3 81% Likely to Appear		Release Level 2	Release Level 2	Release Level 2	Release Level 3	Release Level 4
4 73% Likely to Appear		Release Level 2	Release Level 2	Release Level 2	Release Level 3	Release Level 4
5 69% Likely to Appear		Release Level 3	Release Level 3	Release Level 3	Release Level 3	Release Level 4
6 65% Likely to Appear				Release Level 4	Release Level 4	Release Level 4

## EXHIBIT 13. Ventura—ORAS

### Ventura County ORAS-PAT Pretrial Scoring Matrix

The DPO will complete the ORAS-PAT and utilize the results to make a recommendation to the Court based on the risk assessment score. The Pretrial Scoring Matrix includes the following:

Score of 0-2 = Low risk. Defendant should be released on Own Recognizance (OR) with a Promise to Appear in Court

Score of 3-5 = Moderate risk. Defendant can be released on OR with conditions and monitoring, which could include electronic monitoring.

Score of 6-9 = High risk. Defendant should remain detained.

Note: Overrides/overrides to the score are reviewed by the unit supervisor or their designee.

**EXHIBIT 14.** Yuba—ORAS

<b>ORAS</b>	0-2 Low	3-5 Moderate	6 or More High	
<b>Current Charges</b>	2 or less	3 or less	5 or less	6 or more
<b>Criminal History</b>	2 or less	3 or less	5 or less	6 or more
<b>Recommend</b>	Release OR Pre-Arrestment	Release OR With Conditions Pre-Arrestment	Release OR With Conditions At Arrestment	Detain

## APPENDIX A: DATA REPORTING POLICY

To ensure a minimum level of accuracy, outcome measures in this report (FTA and NCA rates) are only calculated when the denominator has at least 30 observations. When rates are based on fewer cases it is difficult to distinguish true changes in the rate from random fluctuation.

To ensure the privacy of individuals contained in the data used in this report, cell sizes with counts of fewer than 30 are suppressed.



## APPENDIX B: SUPPLEMENTAL TABLES

**TABLE B1.** Booking Date Range by County

County	Total	Earliest book date	Latest book date
Small Counties	4,800	10/1/2019	1/30/2021
Small/Medium Counties	10,946	10/1/2019	3/31/2021
Alameda	29,305	10/1/2019	12/31/2020
Los Angeles	282,925	10/1/2019	3/10/2021
Sacramento	19,050	10/1/2019	10/22/2020
San Joaquin	20,317	10/1/2019	1/26/2021
San Mateo	10,768	10/1/2019	12/31/2020
Santa Barbara	12,932	10/1/2019	1/6/2021
Sonoma	12,574	10/1/2019	12/30/2020
Ventura	23,501	10/1/2019	12/31/2020

**TABLE B2.** Risk Level Derivation, by Pretrial Risk Assessment Tool

	VPRAI	VPRAIR	VPRAIO	ORAS	PSA FTA	PSA NCA
<b>Lower Scores</b>	0-2	0-4	0-2	0-2	1-2	1-2
<b>Middle Scores</b>	3-4	5-8	3-4	3-5	3-4	3-4
<b>Higher Scores</b>	5-9	9-14	5-10	6-9	5-6	5-6
ORAS score groupings were defined by the toolmaker.						
VPRAI score groupings are simplified from 5 levels defined by the toolmaker.						
VPRAI-R score groupings are simplified from 6 levels defined by the toolmaker.						
VPRAI-O score groupings are simplified from 5 levels defined by the toolmaker.						
PSA FTA score groupings are simplified from 6 levels defined by the toolmaker.						
PSA NCA score groupings are simplified from 6 levels defined by the toolmaker.						